



Wind Load Report

1. Site & Building Data

Roof Type: Gable
Wind Speed (ult): 115 mph
Exposure Category: C
Enclosure Class: Enclosed
Building Width (W): 30 ft.
Building Length (L): 48 ft.
Eave Height (h_e): 10 ft.
Foundation Height (h_f): 0 ft.
Roof Pitch: 4 /12
Eave Overhang (OH_e): 1 ft.
Gable Overhang (OH_g): 1 ft.

2. Parameters & Coefficients

Topographic Factor (K_{zt}): 1.0
Directionality Factor (K_d): .85
Roof Angle (θ): 18.43 deg.
Mean Roof Height (h): 12.50 ft.
Ridge Height (h_r): 15.00 ft.
Pos. Internal Pressure (+GCpi): +0.18
Neg. Internal Pressure (-GCpi): -0.18
Velocity Pressure Exp. Coeff. (K_h): 0.85 @ $z=h$
Velocity Pressure (q_h): 24.43 psf
End Zone Width (a): 3.00 ft.
Zone 2/2E Dist.: 15.00 ft.

3. Design Assumptions and Notes

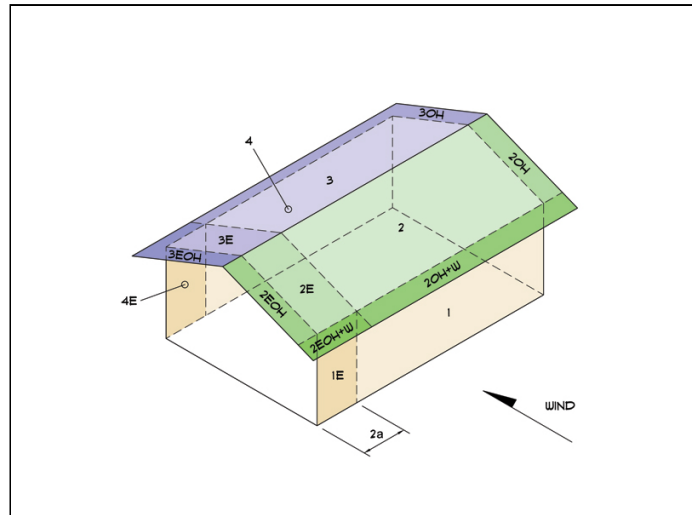
Code Standard: ASCE 7-10
Geometry: Regular-Shaped Bldg.
Height Class: Low-Rise Building
Notes:

4. Design Loads

Top Chord Dead Load: 7 psf
Bottom Chord Dead Load: 10 psf
Truss/Rafter Spacing: 24 in. o/c

4. Design Wind Pressures: MWFRS Envelope Procedure

Load Case A: Transverse Direction			
Surface	GCpf	Design Pressure (psf)	
		(w/ +GCpi)	(w/ -GCpi)
1	0.52	8.22	17.01
2	-0.69	-21.25	-12.46
3	-0.47	-15.84	-7.05
4	-0.42	-14.54	-5.75
1E	0.78	14.66	23.46
2E	-1.07	-30.54	-21.74
3E	-0.67	-20.85	-12.05
4E	-0.62	-19.50	-10.70
2OH	-0.69	-16.86	
2EOH	-1.07	-26.14	
3OH	-0.47	-11.45	
3EOH	-0.67	-16.45	
2OH+W	-0.69/-0.7	-33.96	
2EOH+W	-1.07/-0.7	-43.24	



- a) (+) and (-) signs signify wind pressures acting toward & away from surfaces.
b) External Pressure Coefficients linearly interpolated from Fig. 28.4-1 ASCE 7-10.
c) Design building for all wind directions, 4 load patterns per load case.
d) Total horizontal shear shall not be less than that by neglecting roof wind forces.
e) Min. wind load for enclosed or partially enclosed bldg.: 16 psf wall, 8 psf roof.
f) Design pressures are for strength design, multiply by 0.6 for ASD.

Subject	Wind Loads	Customer	Location	Job No.	2025D340	
Engr.	Engineer	<div>Company Name</div> <div>123 Street City, State 12345</div> <div>ph. (888) 777-5555 www.website.com</div>			Rev.	-
Date	12/26/2025				Page	1

STRUCTURAL ENGINEERS

COMPANY LOGO

This report may not be copied, reproduced or distributed without the written consent of Company Name

Copyright © 2025



This report may not be
copied, reproduced or
distributed without the
written consent of
Company Name

Copyright © 2025

Load Case B: Longitudinal Direction

Surface	GCpf	Design Pressure (psf)	
		(w/ +GCpi)	(w/ -GCpi)
1	-0.45	-15.39	-6.60
2	-0.69	-21.25	-12.46
3	-0.37	-13.44	-4.64
4	-0.45	-15.39	-6.60
5	0.40	5.37	14.17
6	-0.29	-11.48	-2.69
1E	-0.48	-16.12	-7.33
2E	-1.07	-30.54	-21.74
3E	-0.53	-17.34	-8.55
4E	-0.48	-16.12	-7.33
5E	0.61	10.50	19.30
6E	-0.43	-14.90	-6.11
2OH	-0.69	-16.86	
2EOH	-1.07	-26.14	
3OH	-0.37	-9.04	
3EOH	-0.53	-12.95	
2EOH+W	-1.07/-0.7	-43.24	
3EOH+W	-0.53/-0.7	-30.05	



- a) (+) and (-) signs signify wind pressures acting toward & away from surfaces.
b) External Pressure Coefficients linearly interpolated from Fig. 28.4-1 ASCE 7-10.
c) Design building for all wind directions, 4 load patterns per load case.
d) Total horizontal shear shall not be less than that by neglecting roof wind forces.
e) Min. wind load for enclosed or partially enclosed bldg.: 16 psf wall, 8 psf roof.
f) Design pressures are for strength design, multiply by 0.6 for ASD.

Torsional Load Cases

Surface	Load Case	GCpf	Design Pressure (psf)	
			(w/ +GCpi)	(w/ -GCpi)
1T	A	-	2.05	4.25
2T	A	-	-5.31	-3.11
3T	A	-	-3.96	-1.76
4T	A	-	-3.64	-1.44
5T	B	-	1.34	3.54
6T	B	-	-2.87	-0.67



- a) (+) and (-) signs signify wind pressures acting toward & away from surfaces.
b) Pressures designated with a "T" are 25% of full design wind pressures.
c) Torsional loading shall apply to all 8 load patterns using the figures shown.
d) Design pressures are for strength design, multiply by 0.6 for ASD.
e) Torsional Design Exceptions: One story bldg. with $h \leq 30$ ft,
Two stories or less framed with light frame construction,
Two stories or less with flexible diaphragms.

Subject	Wind Loads	Customer	Location	Job No.	2025D340	
Engr.	Engineer	<div>Company Name</div> <div>123 Street City, State 12345</div> <div>ph. (888) 777-5555 www.website.com</div> <div><div>STRUCTURAL ENGINEERS</div><div>COMPANY LOGO</div></div> <div>This report may not be copied, reproduced or distributed without the written consent of Company Name</div> <div>Copyright © 2025</div>			Rev.	-
Date	12/26/2025				Page	2

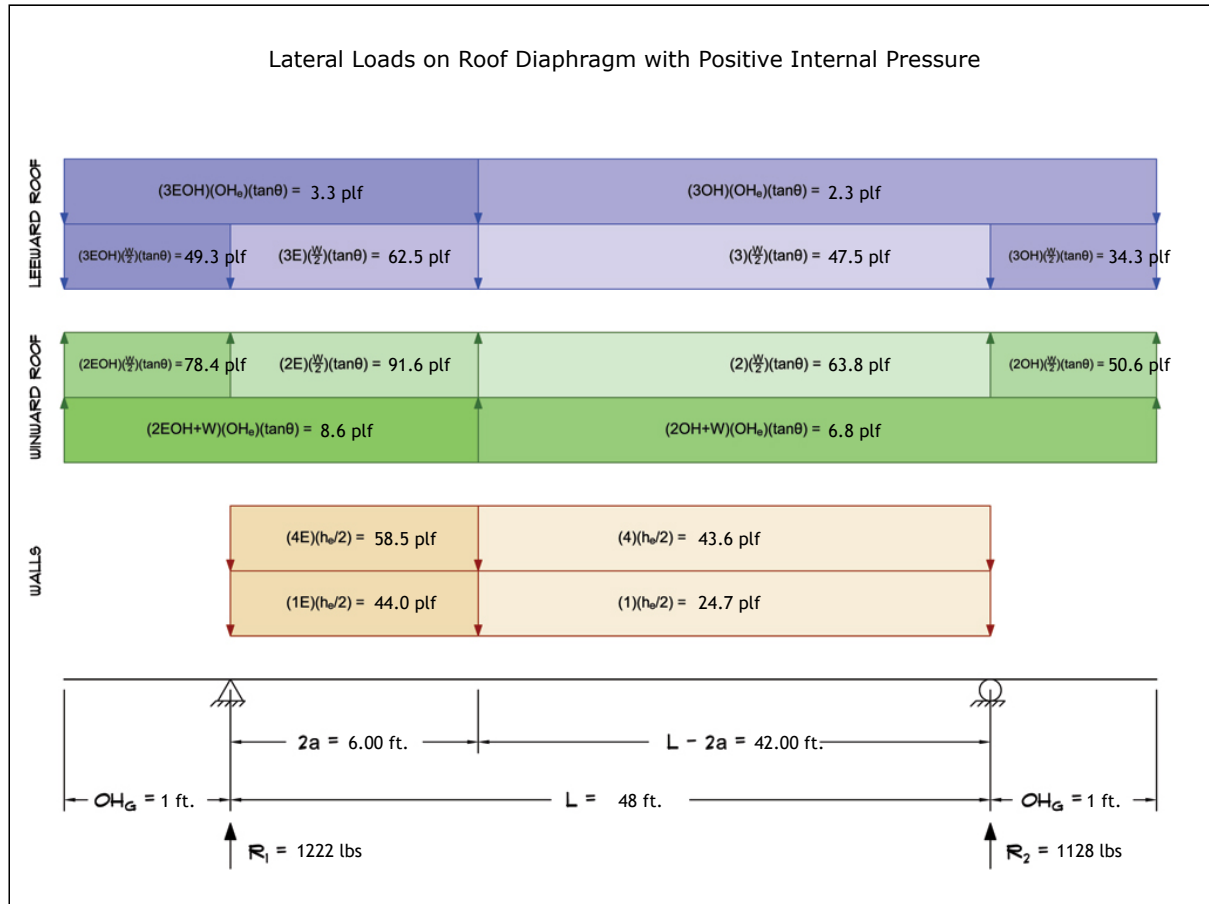


This report may not be
copied, reproduced or
distributed without the
written consent of
Company Name

Copyright © 2025

5. Wind Load Calculations

1.) Lateral Loads - Transverse Direction:



- a) (-) signs signify wind lateral forces acting opposite to the direction of the arrows shown.
b) Strength design values multiplied by 0.6 to obtain ASD values.

Wind Base Shear (ASD)						
Load Case A: Transverse Direction						
Load Case	Walls (lbs)	Roof (lbs)	Roof Overhangs (lbs)	Total Lateral Load (lbs)	R ₁ (lbs)	R ₂ (lbs)
Positive Internal Pressure	3483	-856	-276	2350	1222	1128
Negative Internal Pressure	3483	-856	-276	2350	1222	1128
Roof Pressure = 0	3483	0	0	3483	1831	1652
Min. Pressures (8 psf, 16 psf)	2304	1152	128	3584	1792	1792

- a) Bottom half of wall neglected in tributary area calculations.
b) Strength design values multiplied by 0.6 to obtain ASD values.

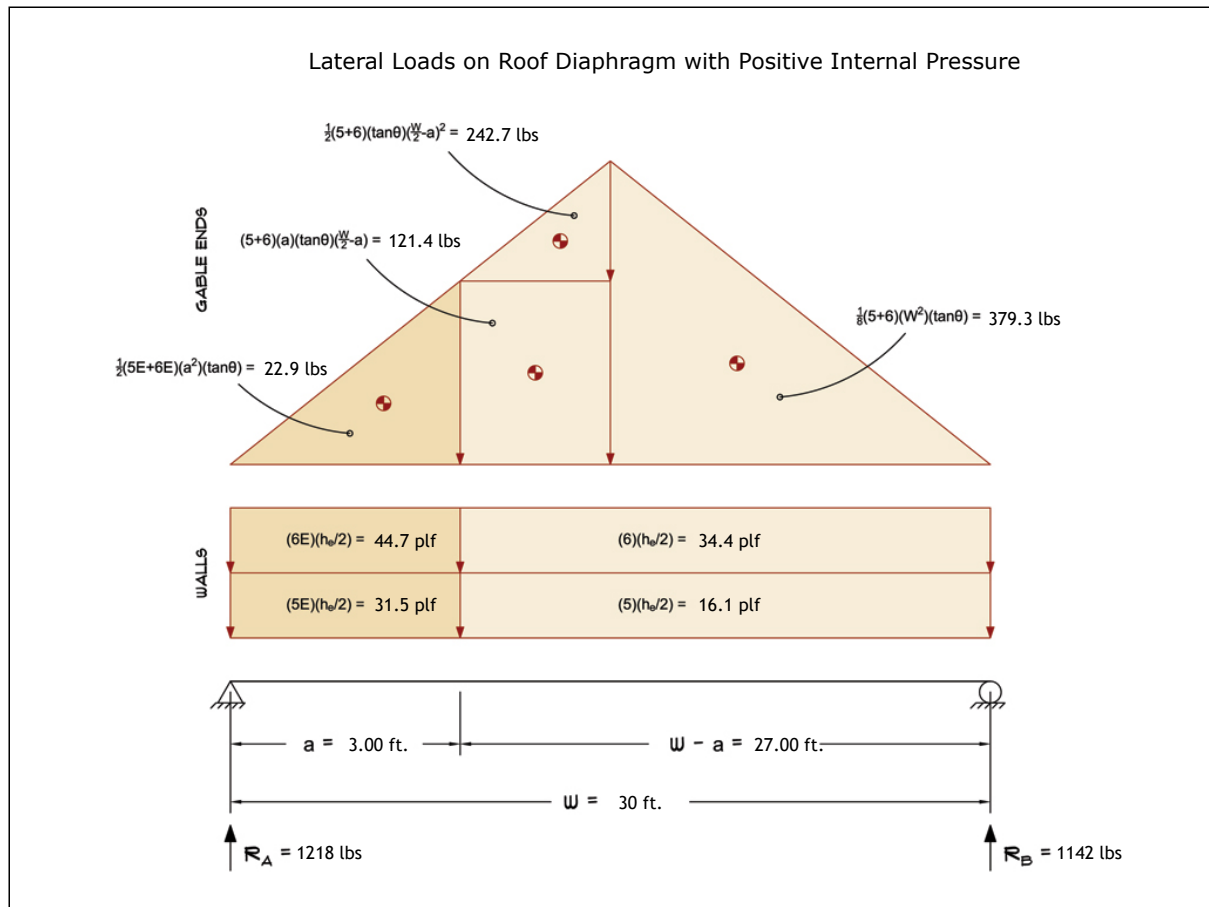
Subject	Customer	Location	Job No.
Wind Loads			2025D340
Engr.	Company Name 123 Street City, State 12345 ph. (888) 777-5555 www.website.com		Rev.
Date			-
12/26/2025			Page
			3



This report may not be
copied, reproduced or
distributed without the
written consent of
Company Name

Copyright © 2025

2.) Lateral Loads - Longitudinal Direction:



- a) (-) signs signify wind lateral forces acting opposite to the direction of the arrows shown.
b) Strength design values multiplied by 0.6 to obtain ASD values.
c) Where the length of building (L) exceeds 4X the mean roof height (h), wind drag forces should additionally be considered.

Wind Base Shear (ASD)						
Load Case B: Longitudinal Direction						
Load Case	Walls (lbs)	Gable Ends (lbs)	Roof (lbs)	Total Lateral Load (lbs)	R _A (lbs)	R _B (lbs)
Positive Internal Pressure	1594	766	0	2360	1218	1142
Negative Internal Pressure	1594	766	0	2360	1218	1142
Roof Pressure = 0	1594	766	0	2360	1218	1142
Min. Pressures (8 psf, 16 psf)	1440	720	0	2160	1080	1080

- a) Bottom half of wall neglected in tributary area calculations.
b) Strength design values multiplied by 0.6 to obtain ASD values.

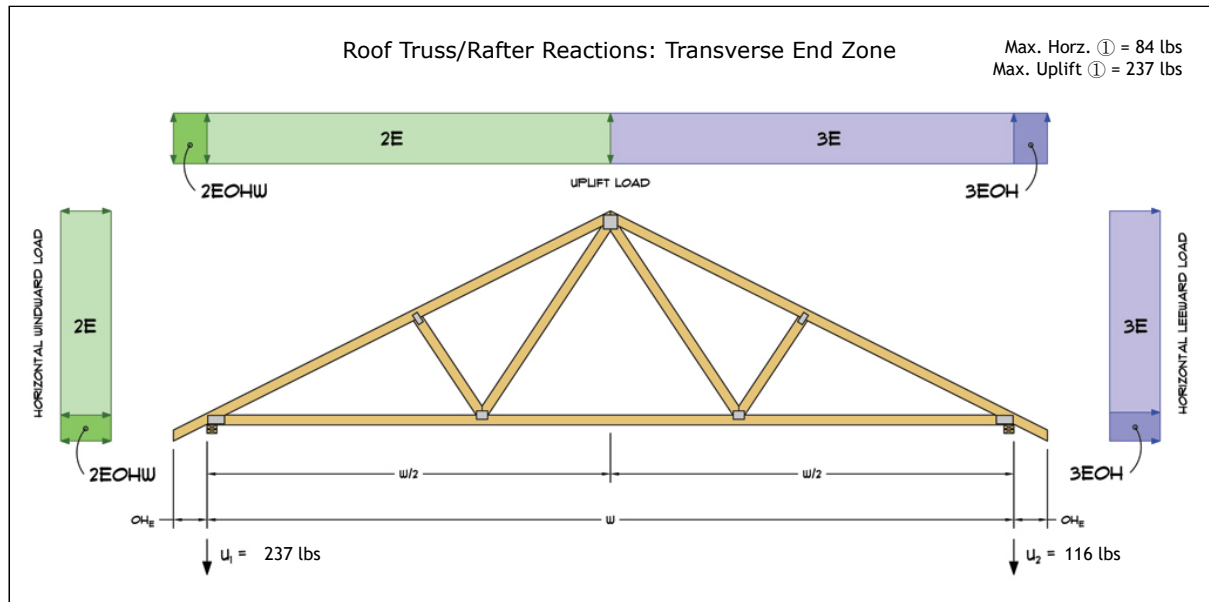
Subject	Customer	Location	Job No.
Wind Loads			2025D340
Engr.	Company Name 123 Street City, State 12345 ph. (888) 777-5555 www.website.com		Rev.
Date			-
12/26/2025			Page
			4



This report may not be
copied, reproduced or
distributed without the
written consent of
Company Name

Copyright © 2025

3.) Roof Truss Reactions:



- a) Strength design values multiplied by 0.6 to obtain ASD values.
b) Windward loads may be positive or negative depending on pitch of roof.

Roof Truss/Rafter Reactions (ASD)					
w/ Positive Internal Pressure					
Load Case	Horizontal Load (lbs)	Gross Uplift (lbs)	Net Uplift (lbs)	U ₁ (lbs)	U ₂ (lbs)
Transverse Int. Zone	41	722	79	78	1
Transverse End Zone	69	996	353	237	116
Longitudinal Int. Zone	50	655	12	46	-34
Longitudinal End Zone	84	909	265	200	65

- a) Gross Uplift calculations do not include any counteracting roof dead loads.
b) Net Uplift calculations include counteracting roof dead loads multiplied by 0.6 per load case (7) ASCE 7-10.
c) Strength design values multiplied by 0.6 to obtain ASD values for wind loads.
d) Loads based on truss spacing calculated at 24" o/c.
e) Negative values for horizontal load indicate load acting in windward direction (transverse load cases).
f) Negative values for uplift indicate net downward force (zero uplift).

*Disclaimer: The calculations produced herein are for initial design and estimating purposes only. The calculations and drawings presented do not constitute a fully engineered design. All of the potential load cases required to fully design an actual structure may not be provided by this calculator. For the design of an actual structure, a registered and licensed professional should be consulted as per IRC 2012 Sec. R802.10.2 and designed according to the minimum requirements of ASCE 7-10. The wind load calculations provided by this online tool are for educational and illustrative purposes only. Medeek Design assumes no liability or loss for any designs presented and does not guarantee fitness for use.

Subject	Wind Loads	Customer	Location	Job No.	2025D340	
Engr.	Engineer	<div>Company Name</div> <div>123 Street City, State 12345</div> <div>ph. (888) 777-5555 www.website.com</div> <div><div>STRUCTURAL ENGINEERS</div><div>COMPANY LOGO</div></div> <div>This report may not be copied, reproduced or distributed without the written consent of Company Name</div> <div>Copyright © 2025</div>			Rev.	-
Date	12/26/2025				Page	5



This report may not be copied, reproduced or distributed without the written consent of Company Name

Copyright © 2025