



Wind Load Report - Christian Sabatino Repair Services

1. Site & Building Data

Roof Type: Gable
Wind Speed (ult): 140 mph
Exposure Category: C
Enclosure Class: Enclosed
Building Width (W): 20 ft.
Building Length (L): 20 ft.
Eave Height (h_e): 10 ft.
Foundation Height (h_f): 0 ft.
Roof Pitch: 5 /12
Eave Overhang (OH_e): 2 ft.
Gable Overhang (OH_g): 2 ft.

2. Parameters & Coefficients

Topographic Factor (K_{zt}): 1.0
Directionality Factor (K_d): .85
Roof Angle (θ): 22.62 deg.
Mean Roof Height (h): 12.08 ft.
Ridge Height (h_r): 14.17 ft.
Pos. Internal Pressure (+GCpi): +0.18
Neg. Internal Pressure (-GCpi): -0.18
Velocity Pressure Exp. Coeff. (K_h): 0.85 @ $z=h$
Velocity Pressure (q_h): 36.20 psf
End Zone Width (a): 3.00 ft.
Zone 2/2E Dist.: 10.00 ft.

3. Design Assumptions and Notes

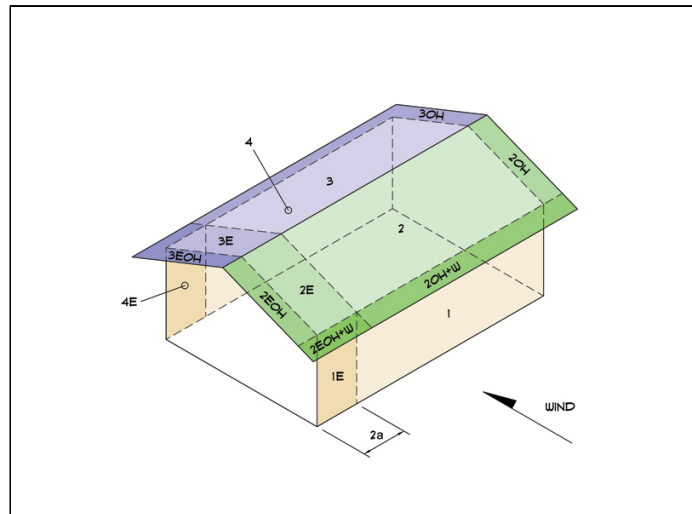
Code Standard: ASCE 7-10
Geometry: Regular-Shaped Bldg.
Height Class: Low-Rise Building
Notes: NOT FOR CONSTRUCTION
Preliminary Design ONLY!!

4. Design Loads

Top Chord Dead Load: 7 psf
Bottom Chord Dead Load: 10 psf
Truss/Rafter Spacing: 24 in. o/c

4. Design Wind Pressures: MWFRS Envelope Procedure

Load Case A: Transverse Direction			
Surface	GCpf	Design Pressure (psf)	
		(w/ +GCpi)	(w/ -GCpi)
1	0.54	12.96	25.99
2	-0.45	-22.96	-9.93
3	-0.47	-23.42	-10.39
4	-0.41	-21.52	-8.48
1E	0.77	21.40	34.44
2E	-0.72	-32.55	-19.51
3E	-0.65	-29.98	-16.95
4E	-0.60	-28.17	-15.14
2OH	-0.45	-16.44	
2EOH	-0.72	-26.03	
3OH	-0.47	-16.90	
3EOH	-0.65	-23.46	
2OH+W	-0.45/-0.7	-41.79	
2EOH+W	-0.72/-0.7	-51.37	



- a) (+) and (-) signs signify wind pressures acting toward & away from surfaces.
b) External Pressure Coefficients linearly interpolated from Fig. 28.4-1 ASCE 7-10.
c) Design building for all wind directions, 4 load patterns per load case.
d) Total horizontal shear shall not be less than that by neglecting roof wind forces.
e) Min. wind load for enclosed or partially enclosed bldg.: 16 psf wall, 8 psf roof.
f) Design pressures are for strength design, multiply by 0.6 for ASD.

Subject Wind Loads	Customer Christian Sabatino	Location	Job No. 2025D339
Engr. Engineer Name	ENGINEERING COMPANY INC.		Rev. -
Date 12/25/2025	Street Address City, CA 99999 ph. (800) 000-0000 www.website.com		Page 1

STRUCTURAL ENGINEERS
COMPANY LOGO

This report may not be copied, reproduced or distributed without the written consent of Engineering Company Inc.

Copyright © 2025

Load Case B: Longitudinal Direction

Surface	GCpf	Design Pressure (psf)	
		(w/ +GCpi)	(w/ -GCpi)
1	-0.45	-22.81	-9.78
2	-0.69	-31.50	-18.46
3	-0.37	-19.91	-6.88
4	-0.45	-22.81	-9.78
5	0.40	7.97	21.00
6	-0.29	-17.02	-3.98
1E	-0.48	-23.90	-10.86
2E	-1.07	-45.26	-32.22
3E	-0.53	-25.71	-12.67
4E	-0.48	-23.90	-10.86
5E	0.61	15.57	28.60
6E	-0.43	-22.08	-9.05
2OH	-0.69	-24.98	
2EOH	-1.07	-38.74	
3OH	-0.37	-13.40	
3EOH	-0.53	-19.19	
2EOH+W	-1.07/-0.7	-64.08	
3EOH+W	-0.53/-0.7	-44.53	



- a) (+) and (-) signs signify wind pressures acting toward & away from surfaces.
b) External Pressure Coefficients linearly interpolated from Fig. 28.4-1 ASCE 7-10.
c) Design building for all wind directions, 4 load patterns per load case.
d) Total horizontal shear shall not be less than that by neglecting roof wind forces.
e) Min. wind load for enclosed or partially enclosed bldg.: 16 psf wall, 8 psf roof.
f) Design pressures are for strength design, multiply by 0.6 for ASD.

Torsional Load Cases

Surface	Load Case	GCpf	Design Pressure (psf)	
			(w/ +GCpi)	(w/ -GCpi)
1T	A	-	3.24	6.50
2T	A	-	-5.74	-2.48
3T	A	-	-5.86	-2.60
4T	A	-	-5.38	-2.12
5T	B	-	1.99	5.25
6T	B	-	-4.25	-1.00



- a) (+) and (-) signs signify wind pressures acting toward & away from surfaces.
b) Pressures designated with a "T" are 25% of full design wind pressures.
c) Torsional loading shall apply to all 8 load patterns using the figures shown.
d) Design pressures are for strength design, multiply by 0.6 for ASD.
e) Torsional Design Exceptions: One story bldg. with $h \leq 30$ ft,
Two stories or less framed with light frame construction,
Two stories or less with flexible diaphragms.

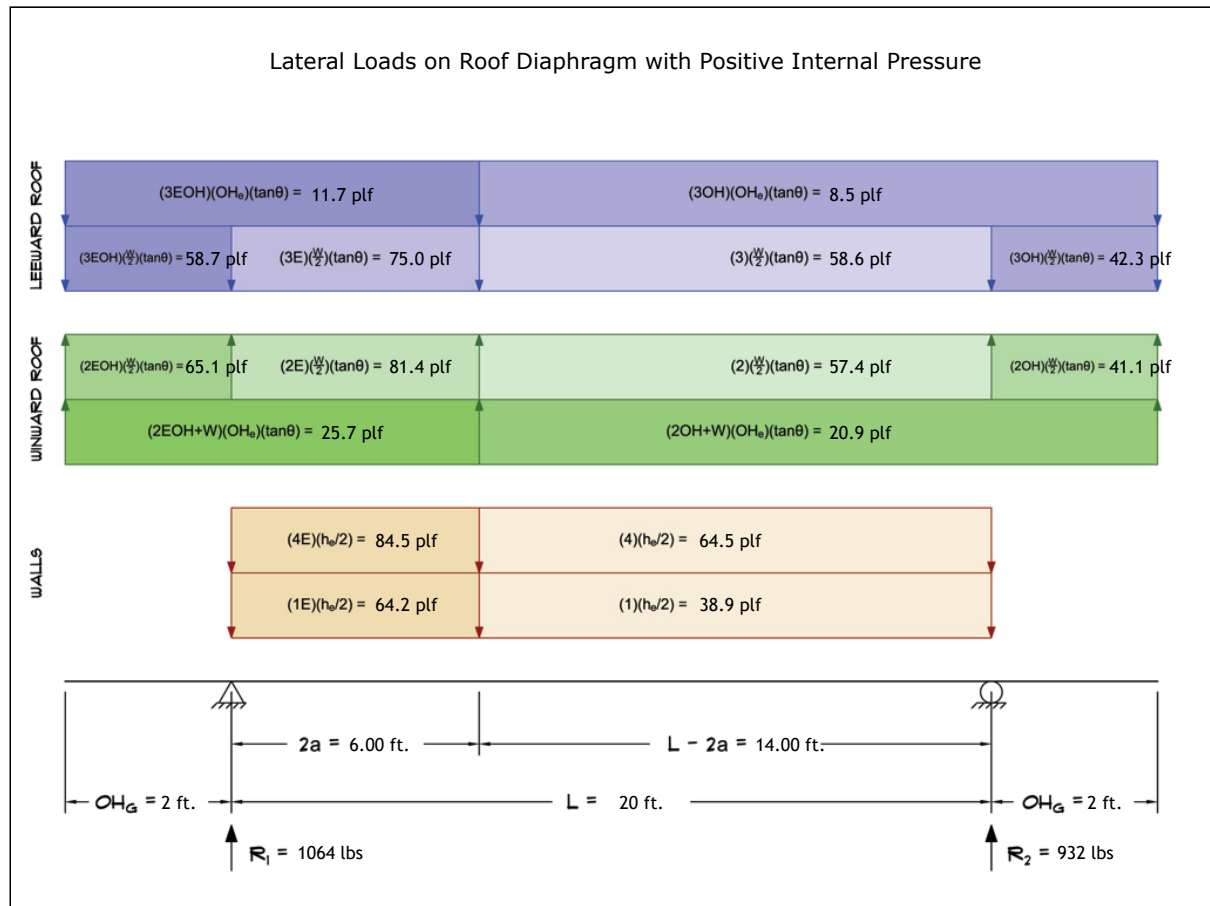
Subject	Wind Loads	Customer	Christian Sabatino	Location		Job No.	2025D339
Engr.	Engineer Name	ENGINEERING COMPANY INC. Street Address City, CA 99999 ph. (800) 000-0000 www.website.com				Rev.	-
Date	12/25/2025					Page	2



This report may not be copied, reproduced or distributed without the written consent of Engineering Company Inc.

5. Wind Load Calculations

1.) Lateral Loads - Transverse Direction:



- a) (-) signs signify wind lateral forces acting opposite to the direction of the arrows shown.
b) Strength design values multiplied by 0.6 to obtain ASD values.

Wind Base Shear (ASD)						
Load Case A: Transverse Direction						
Load Case	Walls (lbs)	Roof (lbs)	Roof Overhangs (lbs)	Total Lateral Load (lbs)	R ₁ (lbs)	R ₂ (lbs)
Positive Internal Pressure	2340	-22	-321	1997	1064	932
Negative Internal Pressure	2340	-22	-321	1997	1064	932
Roof Pressure = 0	2340	0	0	2340	1265	1075
Min. Pressures (8 psf, 16 psf)	960	400	176	1536	768	768

- a) Bottom half of wall neglected in tributary area calculations.
b) Strength design values multiplied by 0.6 to obtain ASD values.

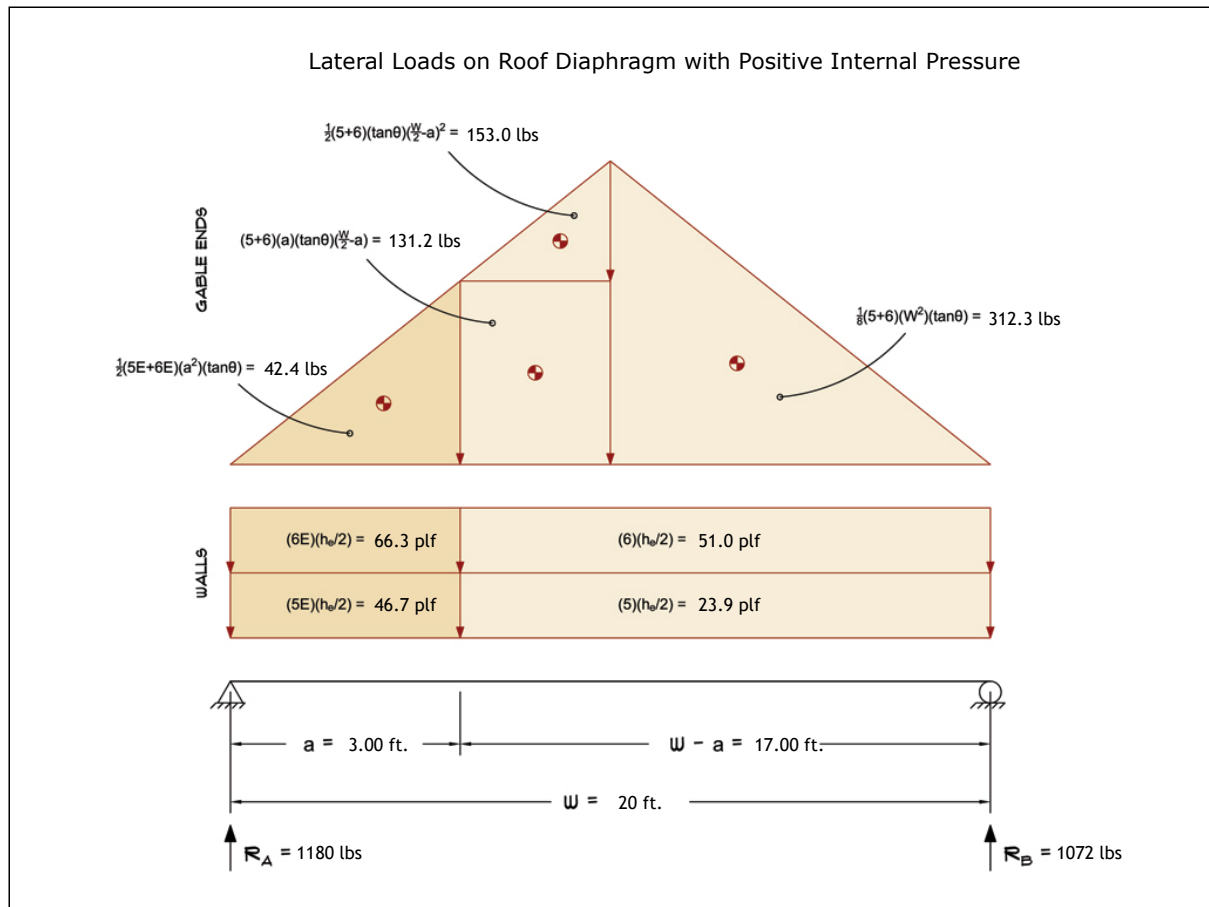
Subject	Wind Loads	Customer	Christian Sabatino	Location		Job No.	2025D339
Engr.	Engineer Name	ENGINEERING COMPANY INC. Street Address City, CA 99999 ph. (800) 000-0000 www.website.com				Rev.	-
Date	12/25/2025					Page	3



This report may not be copied, reproduced or distributed without the written consent of Engineering Company Inc.

Copyright © 2025

2.) Lateral Loads - Longitudinal Direction:



- a) (-) signs signify wind lateral forces acting opposite to the direction of the arrows shown.
b) Strength design values multiplied by 0.6 to obtain ASD values.
c) Where the length of building (L) exceeds 4X the mean roof height (h), wind drag forces should additionally be considered.

Wind Base Shear (ASD)						
Load Case B: Longitudinal Direction						
Load Case	Walls (lbs)	Gable Ends (lbs)	Roof (lbs)	Total Lateral Load (lbs)	R _A (lbs)	R _B (lbs)
Positive Internal Pressure	1613	639	0	2252	1180	1072
Negative Internal Pressure	1613	639	0	2252	1180	1072
Roof Pressure = 0	1613	639	0	2252	1180	1072
Min. Pressures (8 psf, 16 psf)	960	400	0	1360	680	680

- a) Bottom half of wall neglected in tributary area calculations.
b) Strength design values multiplied by 0.6 to obtain ASD values.

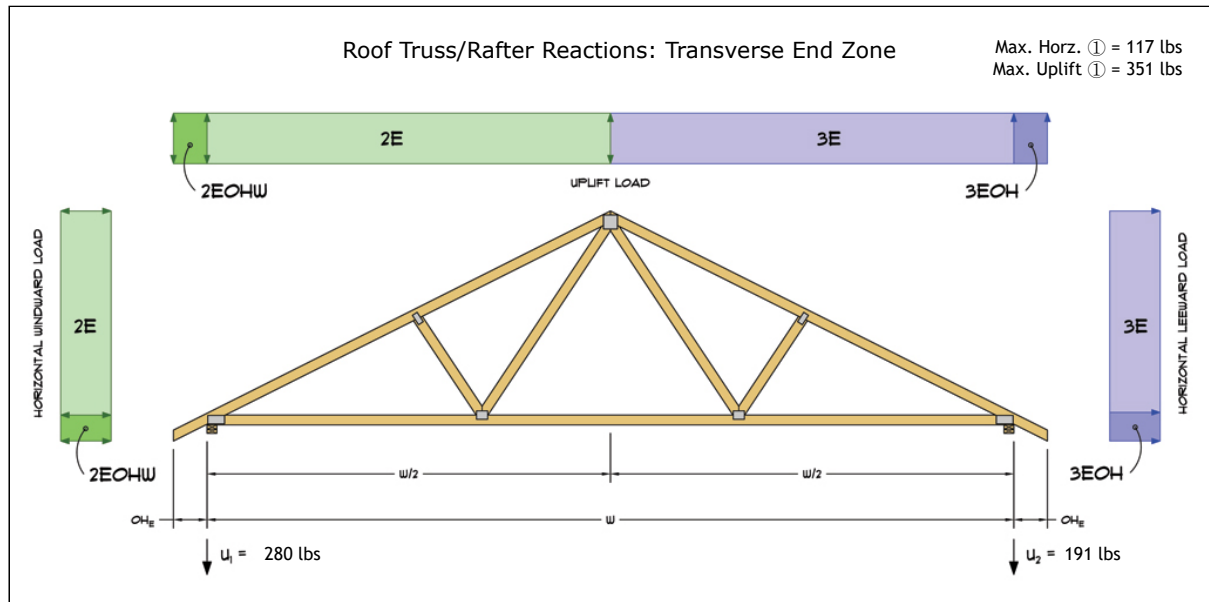
Subject	Wind Loads	Customer	Christian Sabatino	Location		Job No.	2025D339
Engr.	Engineer Name	ENGINEERING COMPANY INC.				Rev.	-
Date	12/25/2025	Street Address City, CA 99999 ph. (800) 000-0000 www.website.com				Page	4



This report may not be copied, reproduced or distributed without the written consent of Engineering Company Inc.

Copyright © 2025

3.) Roof Truss Reactions:



- a) Strength design values multiplied by 0.6 to obtain ASD values.
b) Windward loads may be positive or negative depending on pitch of roof.

Roof Truss/Rafter Reactions (ASD)					
w/ Positive Internal Pressure					
Load Case	Horizontal Load (lbs)	Gross Uplift (lbs)	Net Uplift (lbs)	U_1 (lbs)	U_2 (lbs)
Transverse Int. Zone	23	697	239	151	88
Transverse End Zone	41	930	472	280	191
Longitudinal Int. Zone	70	709	251	175	75
Longitudinal End Zone	117	991	532	351	182

- a) Gross Uplift calculations do not include any counteracting roof dead loads.
b) Net Uplift calculations include counteracting roof dead loads multiplied by 0.6 per load case (7) ASCE 7-10.
c) Strength design values multiplied by 0.6 to obtain ASD values for wind loads.
d) Loads based on truss spacing calculated at 24" o/c.
e) Negative values for horizontal load indicate load acting in windward direction (transverse load cases).
f) Negative values for uplift indicate net downward force (zero uplift).

*Disclaimer: The calculations produced herein are for initial design and estimating purposes only. The calculations and drawings presented do not constitute a fully engineered design. All of the potential load cases required to fully design an actual structure may not be provided by this calculator. For the design of an actual structure, a registered and licensed professional should be consulted as per IRC 2012 Sec. R802.10.2 and designed according to the minimum requirements of ASCE 7-10. The wind load calculations provided by this online tool are for educational and illustrative purposes only. Medeek Design assumes no liability or loss for any designs presented and does not guarantee fitness for use.

Subject	Wind Loads	Customer	Christian Sabatino	Location		Job No.	2025D339
Engr.	Engineer Name	ENGINEERING COMPANY INC. Street Address City, CA 99999 ph. (800) 000-0000 www.website.com				Rev.	-
Date	12/25/2025					Page	5



This report may not be copied, reproduced or distributed without the written consent of Engineering Company Inc.

Copyright © 2025