



Wind Load Report

1. Site & Building Data

Roof Type:	Gable
Wind Speed (ult):	125 mph
Exposure Category:	C
Enclosure Class:	Partially Enclosed
Building Width (W):	14 ft.
Building Length (L):	40 ft.
Eave Height (h_e):	11 ft.
Foundation Height (h_f):	0 ft.
Roof Pitch:	4 /12
Eave Overhang (OH_e):	1.5 ft.
Gable Overhang (OH_g):	1.5 ft.

2. Parameters & Coefficients

Topographic Factor (K_{zt}):	1.0
Directionality Factor (K_d):	.85
Roof Angle (θ):	18.43 deg.
Mean Roof Height (h):	12.17 ft.
Ridge Height (h_r):	13.33 ft.
Pos. Internal Pressure (+GCpi):	+0.55
Neg. Internal Pressure (-GCpi):	-0.55
Velocity Pressure Exp. Coeff. (K_h):	0.85 @ $z=h$
Velocity Pressure (q_h):	28.86 psf
End Zone Width (a):	3.00 ft.
Zone 2/2E Dist.:	7.00 ft.

3. Design Assumptions and Notes

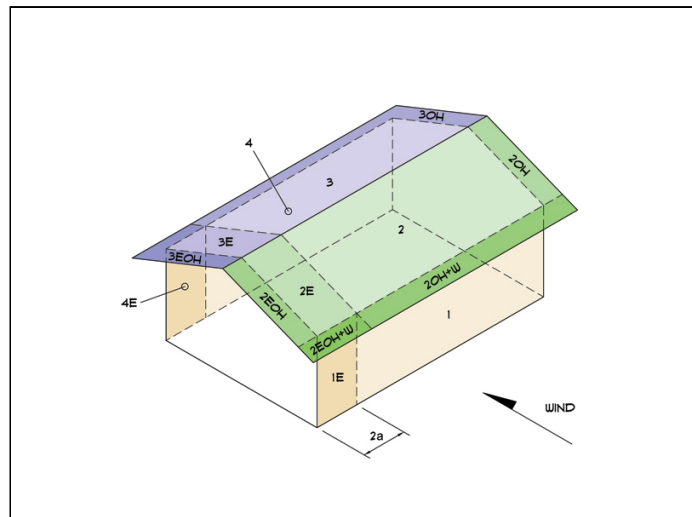
Code Standard:	ASCE 7-10
Geometry:	Regular-Shaped Bldg.
Height Class:	Low-Rise Building
Notes:	

4. Design Loads

Top Chord Dead Load:	0 psf
Bottom Chord Dead Load:	0 psf
Truss/Rafter Spacing:	24 in. o/c

4. Design Wind Pressures: MWFRS Envelope Procedure

Load Case A: Transverse Direction			
Surface	GCpf	Design Pressure (psf)	
		(w/ +GCpi)	(w/ -GCpi)
1	0.52	-0.97	30.78
2	-0.69	-35.79	-4.04
3	-0.47	-29.40	2.35
4	-0.42	-27.86	3.89
1E	0.78	6.64	38.39
2E	-1.07	-46.76	-15.01
3E	-0.67	-35.31	-3.56
4E	-0.62	-33.71	-1.97
2OH	-0.69	-19.91	
2EOH	-1.07	-30.88	
3OH	-0.47	-13.52	
3EOH	-0.67	-19.43	
2OH+W	-0.69/-0.7	-40.12	
2EOH+W	-1.07/-0.7	-51.09	



- a) (+) and (-) signs signify wind pressures acting toward & away from surfaces.
b) External Pressure Coefficients linearly interpolated from Fig. 28.4-1 ASCE 7-10.
c) Design building for all wind directions, 4 load patterns per load case.
d) Total horizontal shear shall not be less than that by neglecting roof wind forces.
e) Min. wind load for enclosed or partially enclosed bldg.: 16 psf wall, 8 psf roof.
f) Design pressures are for strength design, multiply by 0.6 for ASD.

Subject	Wind Loads	Customer	Location	Job No.	2025D331	
Engr.	Engineer Name	<div>ENGINEERING COMPANY INC.</div> <div>Street Address City, CA 99999</div> <div>ph. (800) 000-0000 www.website.com</div> <div><div>STRUCTURAL ENGINEERS</div><div>COMPANY LOGO</div></div> <div>This report may not be copied, reproduced or distributed without the written consent of Engineering Company Inc.</div> <div>Copyright © 2025</div>			Rev.	-
Date	12/18/2025				Page	1

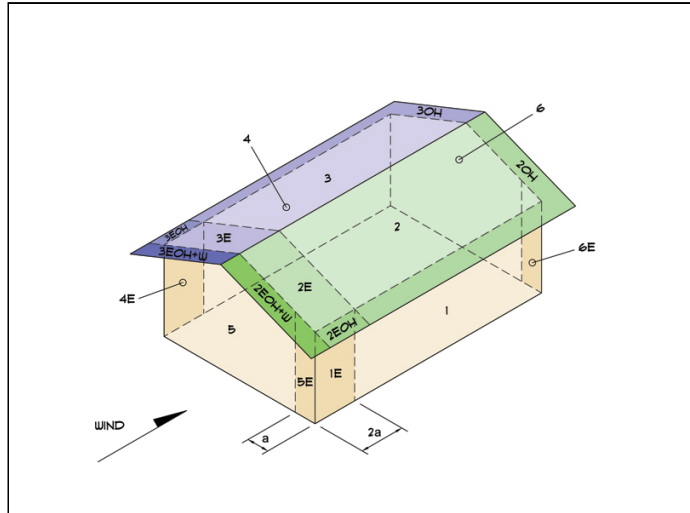


This report may not be copied, reproduced or distributed without the written consent of Engineering Company Inc.

Copyright © 2025

Load Case B: Longitudinal Direction

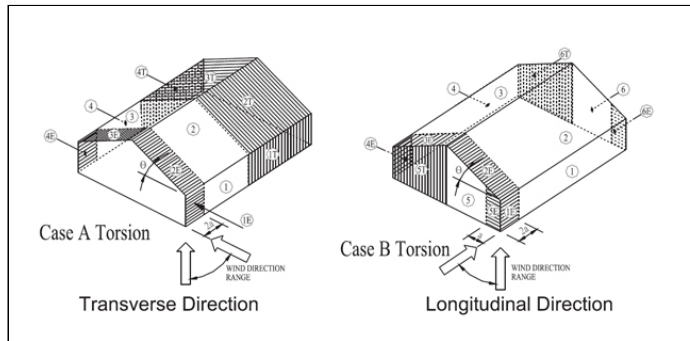
Surface	GCpf	Design Pressure (psf)	
		(w/ +GCpi)	(w/ -GCpi)
1	-0.45	-28.86	2.89
2	-0.69	-35.79	-4.04
3	-0.37	-26.55	5.20
4	-0.45	-28.86	2.89
5	0.40	-4.33	27.42
6	-0.29	-24.24	7.50
1E	-0.48	-29.73	2.02
2E	-1.07	-46.76	-15.01
3E	-0.53	-31.17	0.58
4E	-0.48	-29.73	2.02
5E	0.61	1.73	33.48
6E	-0.43	-28.28	3.46
2OH	-0.69	-19.91	
2EOH	-1.07	-30.88	
3OH	-0.37	-10.68	
3EOH	-0.53	-15.30	
2EOH+W	-1.07/-0.7	-51.09	
3EOH+W	-0.53/-0.7	-35.50	



- a) (+) and (-) signs signify wind pressures acting toward & away from surfaces.
b) External Pressure Coefficients linearly interpolated from Fig. 28.4-1 ASCE 7-10.
c) Design building for all wind directions, 4 load patterns per load case.
d) Total horizontal shear shall not be less than that by neglecting roof wind forces.
e) Min. wind load for enclosed or partially enclosed bldg.: 16 psf wall, 8 psf roof.
f) Design pressures are for strength design, multiply by 0.6 for ASD.

Torsional Load Cases

Surface	Load Case	GCpf	Design Pressure (psf)	
			(w/ +GCpi)	(w/ -GCpi)
1T	A	-	-0.24	7.69
2T	A	-	-8.95	-1.01
3T	A	-	-7.35	0.59
4T	A	-	-6.97	0.97
5T	B	-	-1.08	6.85
6T	B	-	-6.06	1.88



- a) (+) and (-) signs signify wind pressures acting toward & away from surfaces.
b) Pressures designated with a "T" are 25% of full design wind pressures.
c) Torsional loading shall apply to all 8 load patterns using the figures shown.
d) Design pressures are for strength design, multiply by 0.6 for ASD.
e) Torsional Design Exceptions: One story bldg. with $h \leq 30$ ft,
Two stories or less framed with light frame construction,
Two stories or less with flexible diaphragms.

Subject	Wind Loads	Customer	Location	Job No.	2025D331	
Engr.	Engineer Name	<div>ENGINEERING COMPANY INC.</div> <div>Street Address City, CA 99999</div> <div>ph. (800) 000-0000 www.website.com</div> <div><div>STRUCTURAL ENGINEERS</div><div>COMPANY LOGO</div></div> <div>This report may not be copied, reproduced or distributed without the written consent of Engineering Company Inc.</div> <div>Copyright © 2025</div>			Rev.	-
Date	12/18/2025				Page	2

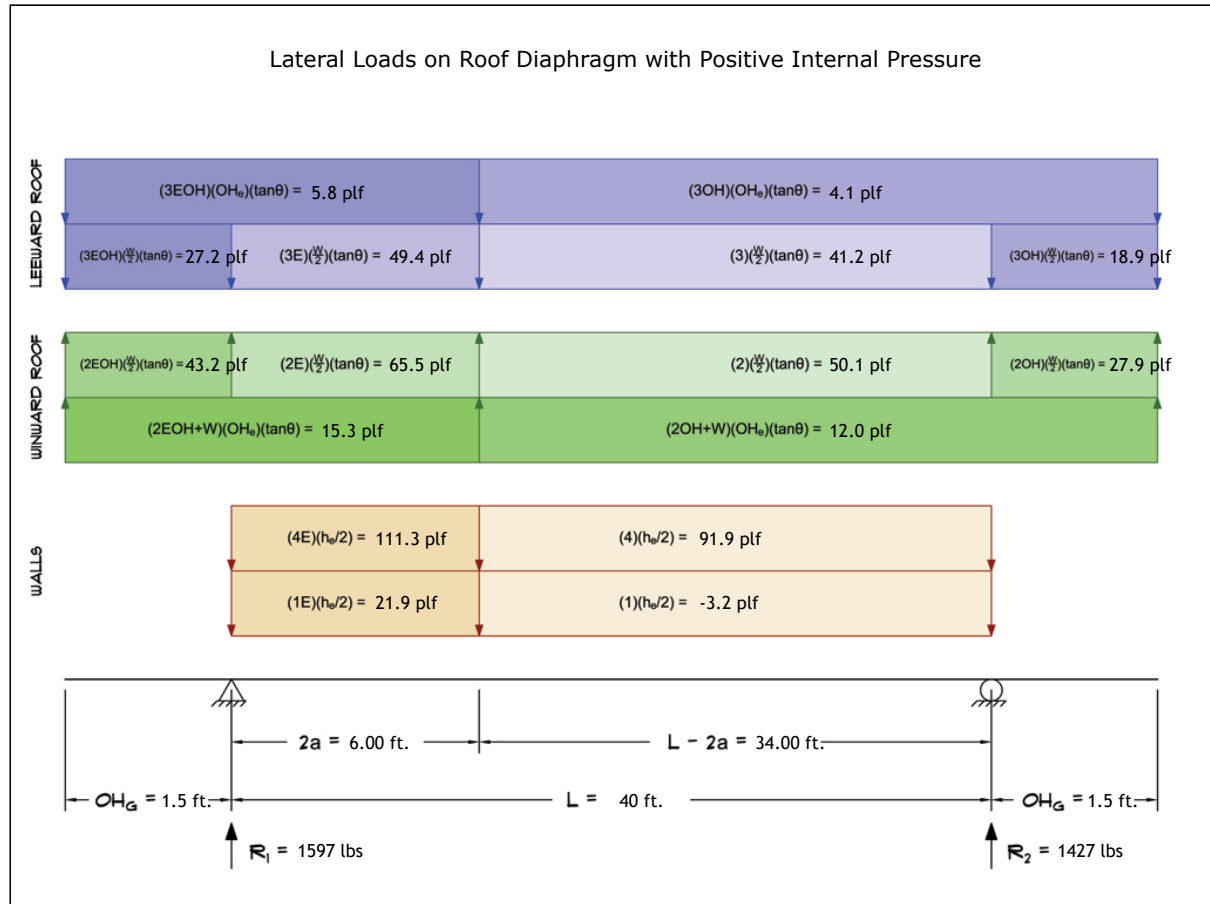


This report may not be copied, reproduced or distributed without the written consent of Engineering Company Inc.

Copyright © 2025

5. Wind Load Calculations

1.) Lateral Loads - Transverse Direction:



- a) (-) signs signify wind lateral forces acting opposite to the direction of the arrows shown.
b) Strength design values multiplied by 0.6 to obtain ASD values.

Wind Base Shear (ASD)						
Load Case A: Transverse Direction						
Load Case	Walls (lbs)	Roof (lbs)	Roof Overhangs (lbs)	Total Lateral Load (lbs)	R ₁ (lbs)	R ₂ (lbs)
Positive Internal Pressure	3817	-400	-392	3024	1597	1427
Negative Internal Pressure	3817	-400	-392	3024	1597	1427
Roof Pressure = 0	3817	0	0	3817	2022	1795
Min. Pressures (8 psf, 16 psf)	2112	448	137	2697	1348	1348

- a) Bottom half of wall neglected in tributary area calculations.
b) Strength design values multiplied by 0.6 to obtain ASD values.

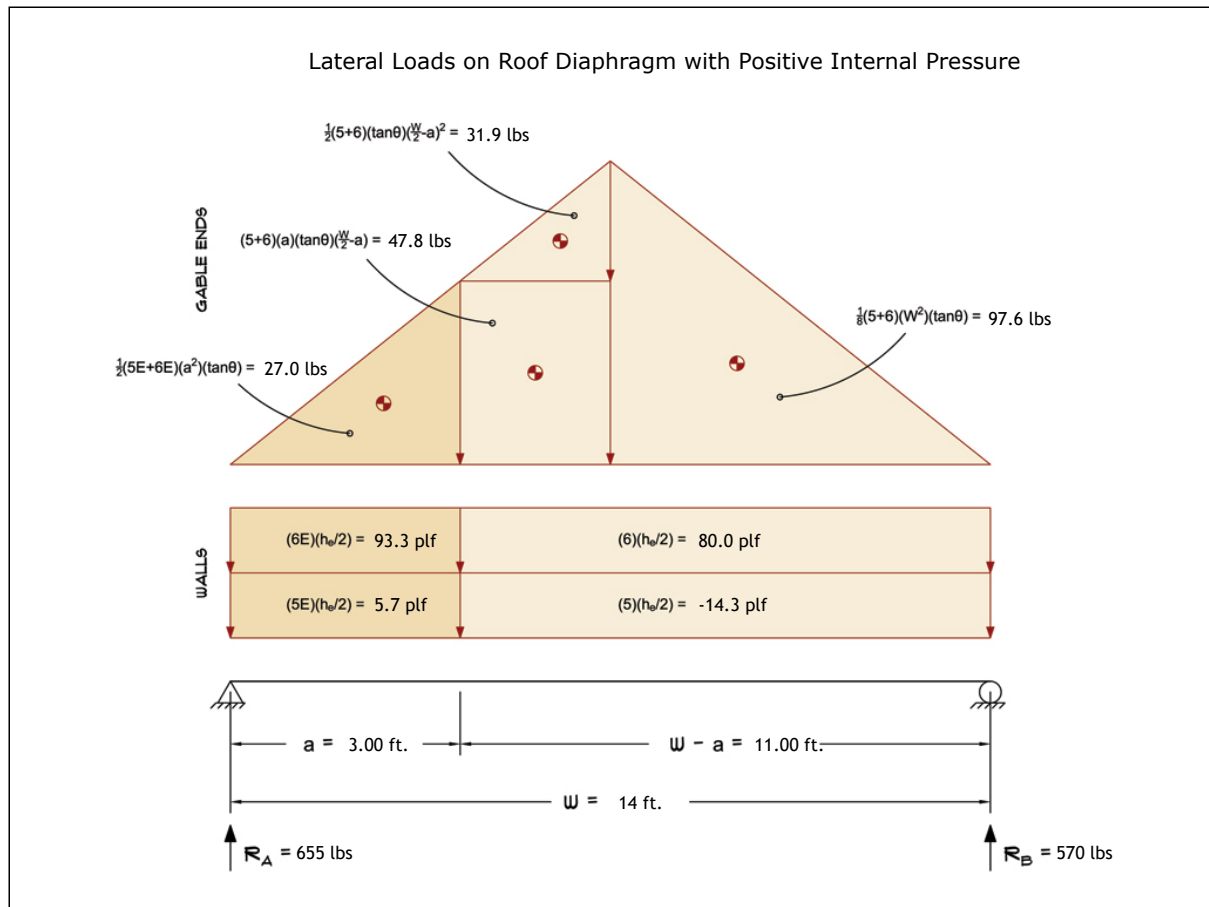
Subject	Customer	Location	Job No.
Wind Loads			2025D331
Engr.	ENGINEERING COMPANY INC. Street Address City, CA 99999 ph. (800) 000-0000 www.website.com		Rev.
Engineer Name			-
Date	12/18/2025		Page
			3



This report may not be copied, reproduced or distributed without the written consent of Engineering Company Inc.

Copyright © 2025

2.) Lateral Loads - Longitudinal Direction:



- a) (-) signs signify wind lateral forces acting opposite to the direction of the arrows shown.
b) Strength design values multiplied by 0.6 to obtain ASD values.
c) Where the length of building (L) exceeds 4X the mean roof height (h), wind drag forces should additionally be considered.

Wind Base Shear (ASD)						
Load Case B: Longitudinal Direction						
Load Case	Walls (lbs)	Gable Ends (lbs)	Roof (lbs)	Total Lateral Load (lbs)	R _A (lbs)	R _B (lbs)
Positive Internal Pressure	1020	204	0	1224	655	570
Negative Internal Pressure	1020	204	0	1224	655	570
Roof Pressure = 0	1020	204	0	1224	655	570
Min. Pressures (8 psf, 16 psf)	739	157	0	896	448	448

- a) Bottom half of wall neglected in tributary area calculations.
b) Strength design values multiplied by 0.6 to obtain ASD values.

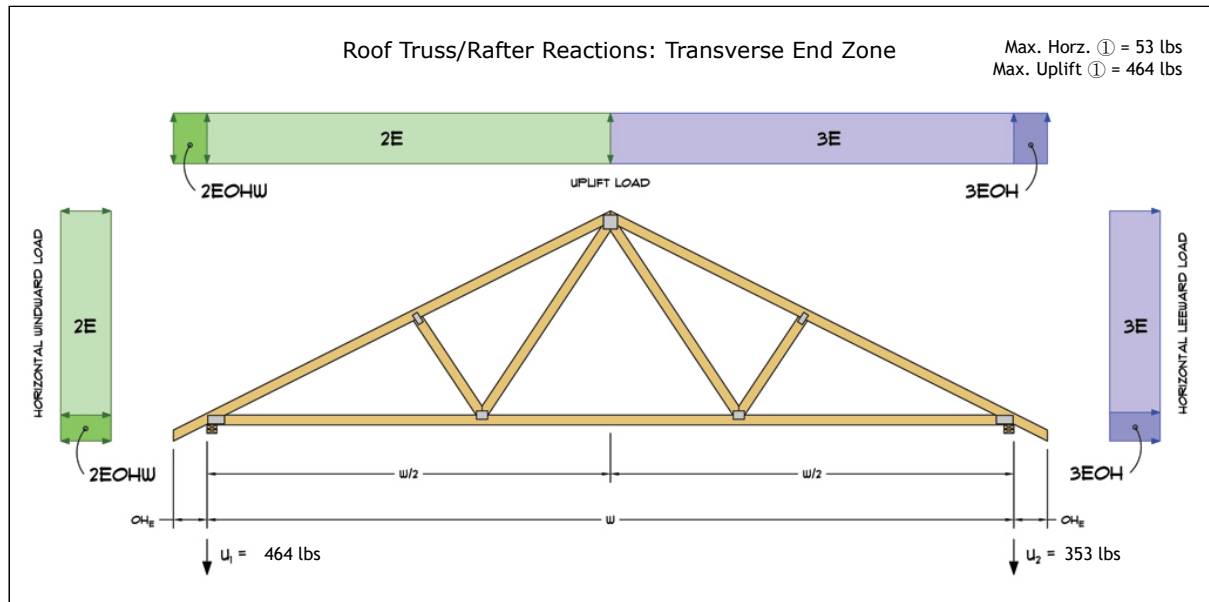
Subject	Customer	Location	Job No.
Wind Loads			2025D331
Engr.	ENGINEERING COMPANY INC. Street Address City, CA 99999 ph. (800) 000-0000 www.website.com		Rev.
Date			-
12/18/2025			Page
			4



This report may not be copied, reproduced or distributed without the written consent of Engineering Company Inc.

Copyright © 2025

3.) Roof Truss Reactions:



- a) Strength design values multiplied by 0.6 to obtain ASD values.
b) Windward loads may be positive or negative depending on pitch of roof.

Roof Truss/Rafter Reactions (ASD)					
w/ Positive Internal Pressure					
Load Case	Horizontal Load (lbs)	Gross Uplift (lbs)	Net Uplift (lbs)	U ₁ (lbs)	U ₂ (lbs)
Transverse Int. Zone	34	644	644	362	282
Transverse End Zone	51	816	816	464	353
Longitudinal Int. Zone	31	579	579	318	261
Longitudinal End Zone	53	738	738	417	321

- a) Gross Uplift calculations do not include any counteracting roof dead loads.
b) Net Uplift calculations include counteracting roof dead loads multiplied by 0.6 per load case (7) ASCE 7-10.
c) Strength design values multiplied by 0.6 to obtain ASD values for wind loads.
d) Loads based on truss spacing calculated at 24" o/c.
e) Negative values for horizontal load indicate load acting in windward direction (transverse load cases).
f) Negative values for uplift indicate net downward force (zero uplift).

*Disclaimer: The calculations produced herein are for initial design and estimating purposes only. The calculations and drawings presented do not constitute a fully engineered design. All of the potential load cases required to fully design an actual structure may not be provided by this calculator. For the design of an actual structure, a registered and licensed professional should be consulted as per IRC 2012 Sec. R802.10.2 and designed according to the minimum requirements of ASCE 7-10. The wind load calculations provided by this online tool are for educational and illustrative purposes only. Medeek Design assumes no liability or loss for any designs presented and does not guarantee fitness for use.

Subject	Wind Loads	Customer	Location	Job No.	2025D331	
Engr.	Engineer Name	<div>ENGINEERING COMPANY INC.</div> <div>Street Address City, CA 99999</div> <div>ph. (800) 000-0000 www.website.com</div> <div></div> <div>This report may not be copied, reproduced or distributed without the written consent of Engineering Company Inc.</div> <div>Copyright © 2025</div>			Rev.	-
Date	12/18/2025				Page	5