



Wind Load Report

1. Site & Building Data

Roof Type:	Gable
Wind Speed (ult):	105 mph
Exposure Category:	C
Enclosure Class:	Partially Enclosed
Building Width (W):	65 ft.
Building Length (L):	65 ft.
Eave Height (h _e):	13 ft.
Foundation Height (h _f):	0 ft.
Roof Pitch:	4 /12
Eave Overhang (OH _e):	18 ft.
Gable Overhang (OH _g):	1 ft.

2. Parameters & Coefficients

Topographic Factor (K _{zt}):	1.0
Directionality Factor (K _d):	.85
Roof Angle (θ):	18.43 deg.
Mean Roof Height (h):	18.42 ft.
Ridge Height (h _r):	23.83 ft.
Pos. Internal Pressure (+GCpi):	+0.55
Neg. Internal Pressure (-GCpi):	-0.55
Velocity Pressure Exp. Coeff. (K _h):	0.89 @ z=h
Velocity Pressure (q _h):	21.26 psf
End Zone Width (a):	3.00 ft.
Zone 2/2E Dist.:	32.50 ft.

3. Design Assumptions and Notes

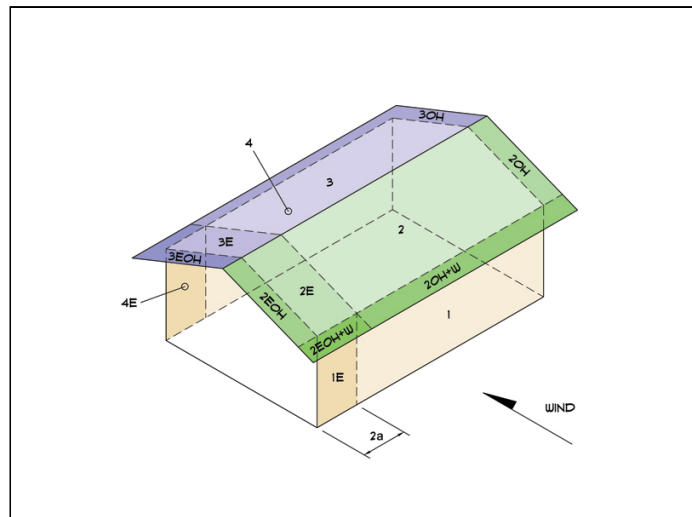
Code Standard:	ASCE 7-10
Geometry:	Regular-Shaped Bldg.
Height Class:	Low-Rise Building
Notes:	

4. Design Loads

Top Chord Dead Load:	7 psf
Bottom Chord Dead Load:	10 psf
Truss/Rafter Spacing:	24 in. o/c

4. Design Wind Pressures: MWFRS Envelope Procedure

Load Case A: Transverse Direction			
Surface	GCpf	Design Pressure (psf)	
		(w/ +GCpi)	(w/ -GCpi)
1	0.52	-0.71	22.68
2	-0.69	-26.37	-2.98
3	-0.47	-21.66	1.73
4	-0.42	-20.53	2.86
1E	0.78	4.89	28.29
2E	-1.07	-34.45	-11.06
3E	-0.67	-26.01	-2.62
4E	-0.62	-24.84	-1.45
2OH	-0.69	-14.67	
2EOH	-1.07	-22.75	
3OH	-0.47	-9.96	
3EOH	-0.67	-14.32	
2OH+W	-0.69/-0.7	-28.93	
2EOH+W	-1.07/-0.7	-37.01	

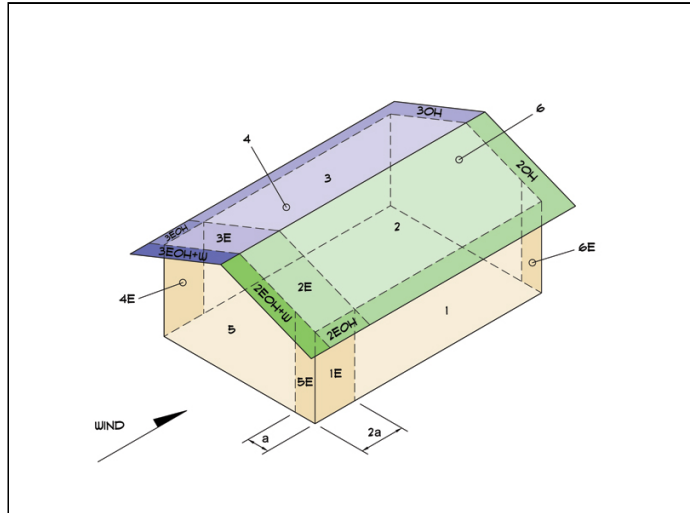


- a) (+) and (-) signs signify wind pressures acting toward & away from surfaces.
b) External Pressure Coefficients linearly interpolated from Fig. 28.4-1 ASCE 7-10.
c) Design building for all wind directions, 4 load patterns per load case.
d) Total horizontal shear shall not be less than that by neglecting roof wind forces.
e) Min. wind load for enclosed or partially enclosed bldg.: 16 psf wall, 8 psf roof.
f) Design pressures are for strength design, multiply by 0.6 for ASD.

Subject Wind Loads	Customer	Location	Job No. 2025D140
Engr. Engineer Name	ENGINEERING COMPANY INC. Street Address City, CA 99999 ph. (800) 000-0000 www.website.com		Rev. -
Date 5/8/2025			Page 1
			This report may not be copied, reproduced or distributed without the written consent of Engineering Company Inc. Copyright © 2025

Load Case B: Longitudinal Direction

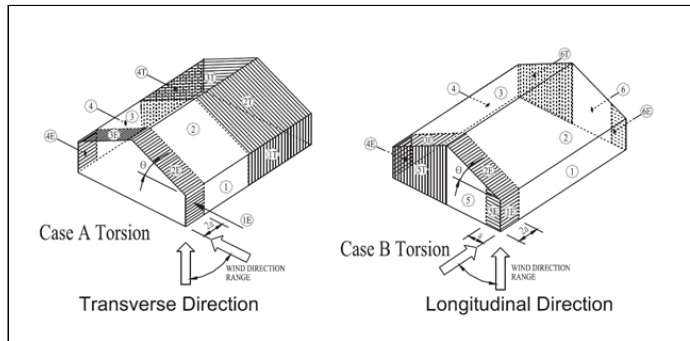
Surface	GCpf	Design Pressure (psf)	
		(w/ +GCpi)	(w/ -GCpi)
1	-0.45	-21.26	2.13
2	-0.69	-26.37	-2.98
3	-0.37	-19.56	3.83
4	-0.45	-21.26	2.13
5	0.40	-3.19	20.20
6	-0.29	-17.86	5.53
1E	-0.48	-21.90	1.49
2E	-1.07	-34.45	-11.06
3E	-0.53	-22.97	0.43
4E	-0.48	-21.90	1.49
5E	0.61	1.28	24.67
6E	-0.43	-20.84	2.55
2OH	-0.69	-14.67	
2EOH	-1.07	-22.75	
3OH	-0.37	-7.87	
3EOH	-0.53	-11.27	
2EOH+W	-1.07/-0.7	-37.64	
3EOH+W	-0.53/-0.7	-26.15	



- a) (+) and (-) signs signify wind pressures acting toward & away from surfaces.
b) External Pressure Coefficients linearly interpolated from Fig. 28.4-1 ASCE 7-10.
c) Design building for all wind directions, 4 load patterns per load case.
d) Total horizontal shear shall not be less than that by neglecting roof wind forces.
e) Min. wind load for enclosed or partially enclosed bldg.: 16 psf wall, 8 psf roof.
f) Design pressures are for strength design, multiply by 0.6 for ASD.

Torsional Load Cases

Surface	Load Case	GCpf	Design Pressure (psf)	
			(w/ +GCpi)	(w/ -GCpi)
1T	A	-	-0.18	5.67
2T	A	-	-6.59	-0.74
3T	A	-	-5.41	0.43
4T	A	-	-5.13	0.72
5T	B	-	-0.80	5.05
6T	B	-	-4.47	1.38



- a) (+) and (-) signs signify wind pressures acting toward & away from surfaces.
b) Pressures designated with a "T" are 25% of full design wind pressures.
c) Torsional loading shall apply to all 8 load patterns using the figures shown.
d) Design pressures are for strength design, multiply by 0.6 for ASD.
e) Torsional Design Exceptions: One story bldg. with $h \leq 30$ ft,
Two stories or less framed with light frame construction,
Two stories or less with flexible diaphragms.

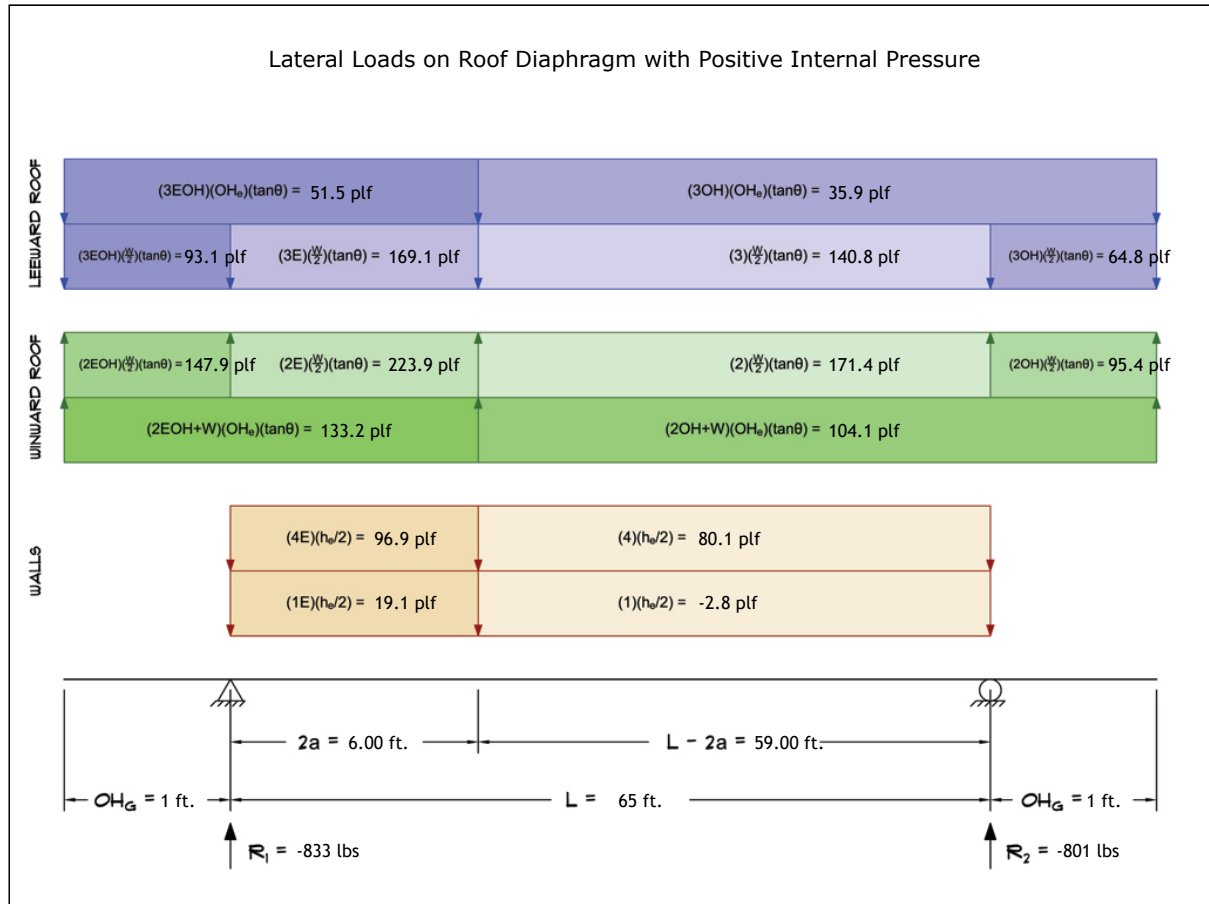
Subject	Wind Loads	Customer	Location	Job No.	2025D140	
Engr.	Engineer Name	<div>ENGINEERING COMPANY INC.</div> <div>Street Address City, CA 99999</div> <div>ph. (800) 000-0000 www.website.com</div> <div><div>STRUCTURAL ENGINEERS</div><div>COMPANY LOGO</div></div> <div>This report may not be copied, reproduced or distributed without the written consent of Engineering Company Inc.</div> <div>Copyright © 2025</div>			Rev.	-
Date	5/8/2025				Page	2



This report may not be copied, reproduced or distributed without the written consent of Engineering Company Inc.

5. Wind Load Calculations

1.) Lateral Loads - Transverse Direction:



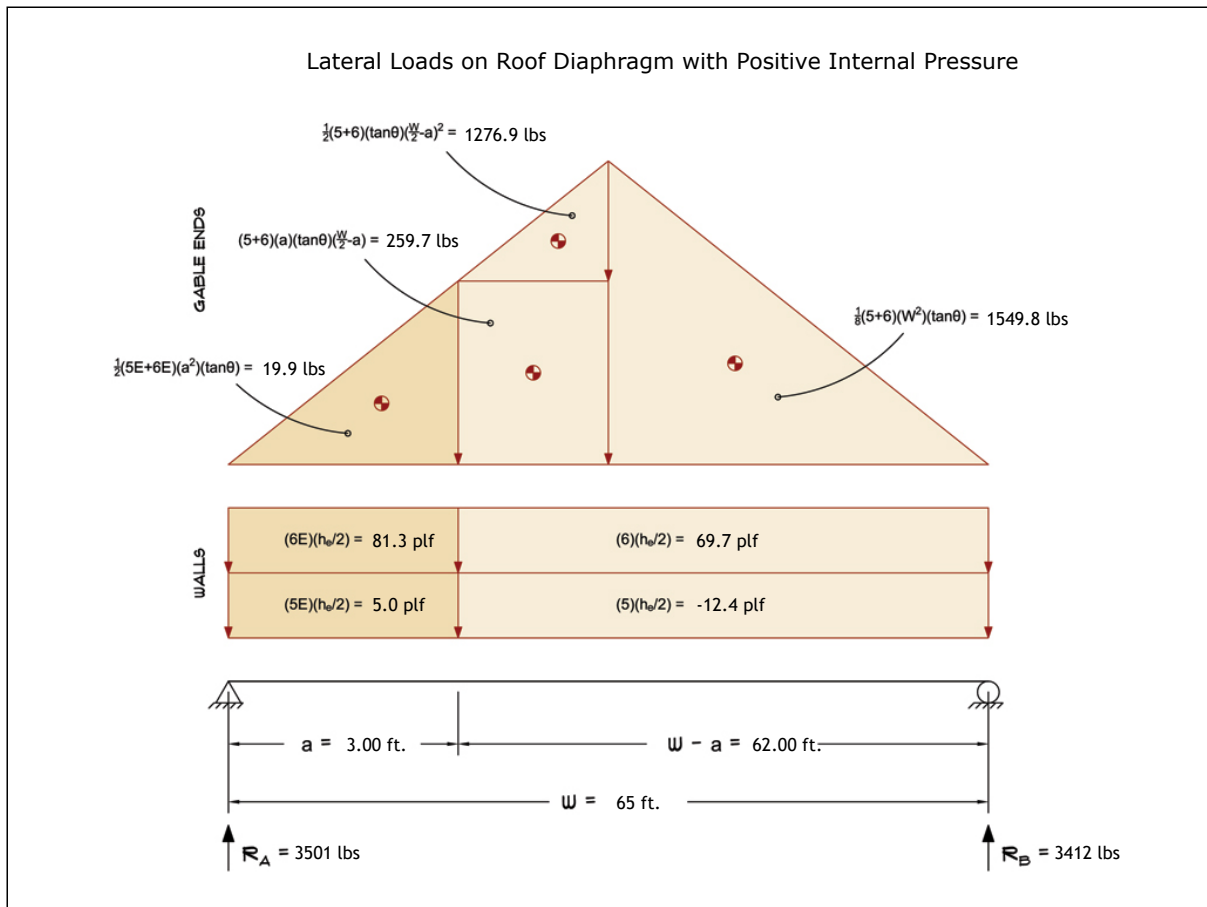
- a) (-) signs signify wind lateral forces acting opposite to the direction of the arrows shown.
b) Strength design values multiplied by 0.6 to obtain ASD values.

Wind Base Shear (ASD)						
Load Case A: Transverse Direction						
Load Case	Walls (lbs)	Roof (lbs)	Roof Overhangs (lbs)	Total Lateral Load (lbs)	R ₁ (lbs)	R ₂ (lbs)
Positive Internal Pressure	5255	-2135	-4754	-1634	-833	-801
Negative Internal Pressure	5255	-2135	-4754	-1634	-833	-801
Roof Pressure = 0	5255	0	0	5255	2733	2522
Min. Pressures (8 psf, 16 psf)	4056	3380	2034	9470	4735	4735

- a) Bottom half of wall neglected in tributary area calculations.
b) Strength design values multiplied by 0.6 to obtain ASD values.

Subject	Wind Loads	Customer	Location	Job No.	2025D140	
Engr.	Engineer Name	<div>ENGINEERING COMPANY INC.</div> <div>Street Address City, CA 99999</div> <div>ph. (800) 000-0000 www.website.com</div> <div><div>STRUCTURAL ENGINEERS</div><div>COMPANY LOGO</div></div> <div>This report may not be copied, reproduced or distributed without the written consent of Engineering Company Inc.</div> <div>Copyright © 2025</div>			Rev.	-
Date	5/8/2025				Page	3

2.) Lateral Loads - Longitudinal Direction:



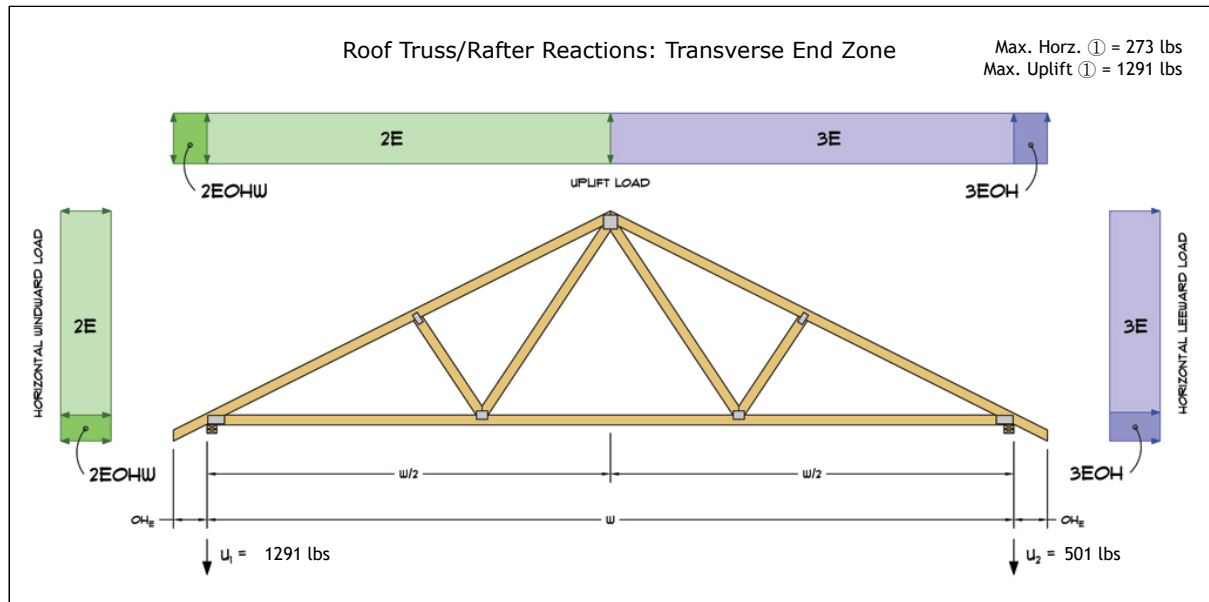
- a) (-) signs signify wind lateral forces acting opposite to the direction of the arrows shown.
b) Strength design values multiplied by 0.6 to obtain ASD values.
c) Where the length of building (L) exceeds 4X the mean roof height (h), wind drag forces should additionally be considered.

Wind Base Shear (ASD)						
Load Case B: Longitudinal Direction						
Load Case	Walls (lbs)	Gable Ends (lbs)	Roof (lbs)	Total Lateral Load (lbs)	R _A (lbs)	R _B (lbs)
Positive Internal Pressure	3806	3106	0	6913	3501	3412
Negative Internal Pressure	3806	3106	0	6913	3501	3412
Roof Pressure = 0	3806	3106	0	6913	3501	3412
Min. Pressures (8 psf, 16 psf)	4056	3380	0	7436	3718	3718

- a) Bottom half of wall neglected in tributary area calculations.
b) Strength design values multiplied by 0.6 to obtain ASD values.

Subject	Wind Loads	Customer	Location	Job No.	2025D140	
Engr.	Engineer Name	<div>ENGINEERING COMPANY INC.</div> <div>Street Address City, CA 99999</div> <div>ph. (800) 000-0000 www.website.com</div> <div><div>STRUCTURAL ENGINEERS</div><div>COMPANY LOGO</div></div> <div>This report may not be copied, reproduced or distributed without the written consent of Engineering Company Inc.</div> <div>Copyright © 2025</div>			Rev.	-
Date	5/8/2025				Page	4

3.) Roof Truss Reactions:



- a) Strength design values multiplied by 0.6 to obtain ASD values.
b) Windward loads may be positive or negative depending on pitch of roof.

Roof Truss/Rafter Reactions (ASD)					
w/ Positive Internal Pressure					
Load Case	Horizontal Load (lbs)	Gross Uplift (lbs)	Net Uplift (lbs)	U ₁ (lbs)	U ₂ (lbs)
Transverse Int. Zone	198	2713	1039	827	212
Transverse End Zone	273	3467	1792	1291	501
Longitudinal Int. Zone	137	2278	604	462	142
Longitudinal End Zone	232	2974	1300	920	380

- a) Gross Uplift calculations do not include any counteracting roof dead loads.
b) Net Uplift calculations include counteracting roof dead loads multiplied by 0.6 per load case (7) ASCE 7-10.
c) Strength design values multiplied by 0.6 to obtain ASD values for wind loads.
d) Loads based on truss spacing calculated at 24" o/c.
e) Negative values for horizontal load indicate load acting in windward direction (transverse load cases).
f) Negative values for uplift indicate net downward force (zero uplift).

*Disclaimer: The calculations produced herein are for initial design and estimating purposes only. The calculations and drawings presented do not constitute a fully engineered design. All of the potential load cases required to fully design an actual structure may not be provided by this calculator. For the design of an actual structure, a registered and licensed professional should be consulted as per IRC 2012 Sec. R802.10.2 and designed according to the minimum requirements of ASCE 7-10. The wind load calculations provided by this online tool are for educational and illustrative purposes only. Medeek Design assumes no liability or loss for any designs presented and does not guarantee fitness for use.

Subject	Wind Loads	Customer	Location	Job No.	2025D140
Engr.	Engineer Name	ENGINEERING COMPANY INC.			Rev.
Date	5/8/2025	Street Address City, CA 99999 ph. (800) 000-0000 www.website.com			Page
				5	



This report may not be copied, reproduced or distributed without the written consent of Engineering Company Inc.

Copyright © 2025