



Wind Load Report - Wind Load Report

1. Site & Building Data

Roof Type: Gable
 Wind Speed (ult): 115 mph
 Exposure Category: C
 Enclosure Class: Enclosed
 Building Width (W): 24 ft.
 Building Length (L): 36 ft.
 Eave Height (h_e): 10 ft.
 Foundation Height (h_f): 3.5 ft.
 Roof Pitch: 4 /12
 Eave Overhang (OH_e): 1 ft.
 Gable Overhang (OH_g): 1 ft.

2. Parameters & Coefficients

Topographic Factor (K_{zt}): 1.0
 Directionality Factor (K_d): .85
 Roof Angle (θ): 18.43 deg.
 Mean Roof Height (h): 12.00 ft.
 Ridge Height (h_r): 14.00 ft.
 Pos. Internal Pressure (+GCpi): +0.18
 Neg. Internal Pressure (-GCpi): -0.18
 Velocity Pressure Exp. Coeff. (K_h): 0.85 @ $z=h$
 Velocity Pressure (q_h): 24.43 psf
 End Zone Width (a): 3.00 ft.
 Zone 2/2E Dist.: 12.00 ft.

3. Design Assumptions and Notes

Code Standard: ASCE 7-10
 Geometry: Regular-Shaped Bldg.
 Height Class: Low-Rise Building
 Notes:

4. Design Loads

Top Chord Dead Load: 7 psf
 Bottom Chord Dead Load: 10 psf
 Truss/Rafter Spacing: 24 in. o/c

4. Design Wind Pressures: MWFRS Envelope Procedure

Load Case A: Transverse Direction			
Surface	GCpf	Design Pressure (psf)	
		(w/ +GCpi)	(w/ -GCpi)
1	0.52	8.22	17.01
2	-0.69	-21.25	-12.46
3	-0.47	-15.84	-7.05
4	-0.42	-14.54	-5.75
1E	0.78	14.66	23.46
2E	-1.07	-30.54	-21.74
3E	-0.67	-20.85	-12.05
4E	-0.62	-19.50	-10.70
2OH	-0.69	-16.86	
2EOH	-1.07	-26.14	
3OH	-0.47	-11.45	
3EOH	-0.67	-16.45	
2OH+W	-0.69/-0.7	-33.96	
2EOH+W	-1.07/-0.7	-43.24	

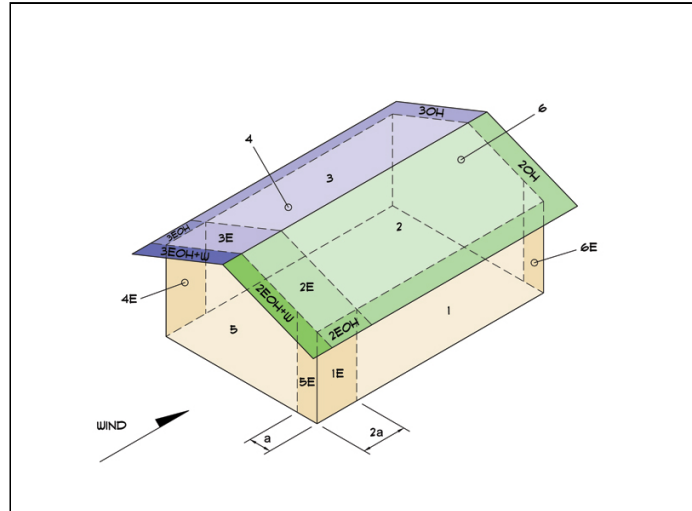


- a) (+) and (-) signs signify wind pressures acting toward & away from surfaces.
 b) External Pressure Coefficients linearly interpolated from Fig. 28.4-1 ASCE 7-10.
 c) Design building for all wind directions, 4 load patterns per load case.
 d) Total horizontal shear shall not be less than that by neglecting roof wind forces.
 e) Min. wind load for enclosed or partially enclosed bldg.: 16 psf wall, 8 psf roof.
 f) Design pressures are for strength design, multiply by 0.6 for ASD.

Subject Wind Loads	Customer Max Boortz Boortz	Location 1527 MT Vernon Ave	Job No. PB25-0178
Engr. Scott Newberg	DSN Design Sales and Services LLC 315 N Sherwood Ave ph. 616-318-5654 www.dsndesign.net		Rev. -
Date 5/1/2025	 This report may not be copied, reproduced or distributed without the written consent of DSN Design Sales and Services LLC. Copyright © 2025		Page 1

Load Case B: Longitudinal Direction

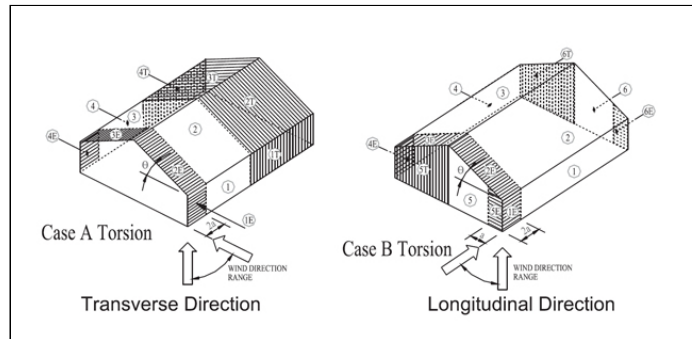
Surface	GCpf	Design Pressure (psf)	
		(w/ +GCpi)	(w/ -GCpi)
1	-0.45	-15.39	-6.60
2	-0.69	-21.25	-12.46
3	-0.37	-13.44	-4.64
4	-0.45	-15.39	-6.60
5	0.40	5.37	14.17
6	-0.29	-11.48	-2.69
1E	-0.48	-16.12	-7.33
2E	-1.07	-30.54	-21.74
3E	-0.53	-17.34	-8.55
4E	-0.48	-16.12	-7.33
5E	0.61	10.50	19.30
6E	-0.43	-14.90	-6.11
2OH	-0.69	-16.86	
2EOH	-1.07	-26.14	
3OH	-0.37	-9.04	
3EOH	-0.53	-12.95	
2EOH+W	-1.07/-0.7	-43.24	
3EOH+W	-0.53/-0.7	-30.05	



- a) (+) and (-) signs signify wind pressures acting toward & away from surfaces.
b) External Pressure Coefficients linearly interpolated from Fig. 28.4-1 ASCE 7-10.
c) Design building for all wind directions, 4 load patterns per load case.
d) Total horizontal shear shall not be less than that by neglecting roof wind forces.
e) Min. wind load for enclosed or partially enclosed bldg.: 16 psf wall, 8 psf roof.
f) Design pressures are for strength design, multiply by 0.6 for ASD.

Torsional Load Cases

Surface	Load Case	GCpf	Design Pressure (psf)	
			(w/ +GCpi)	(w/ -GCpi)
1T	A	-	2.05	4.25
2T	A	-	-5.31	-3.11
3T	A	-	-3.96	-1.76
4T	A	-	-3.64	-1.44
5T	B	-	1.34	3.54
6T	B	-	-2.87	-0.67



- a) (+) and (-) signs signify wind pressures acting toward & away from surfaces.
b) Pressures designated with a "T" are 25% of full design wind pressures.
c) Torsional loading shall apply to all 8 load patterns using the figures shown.
d) Design pressures are for strength design, multiply by 0.6 for ASD.
e) Torsional Design Exceptions: One story bldg. with $h \leq 30$ ft,
Two stories or less framed with light frame construction,
Two stories or less with flexible diaphragms.

Subject	Wind Loads	Customer	Max Boortz Boortz	Location	1527 MT Vernon Ave	Job No.	PB25-0178
Engr.	Scott Newberg	DSN Design Sales and Services LLC 315 N Sherwood Ave ph. 616-318-5654 www.dsndesign.net				Rev.	-
Date	5/1/2025					Page	2

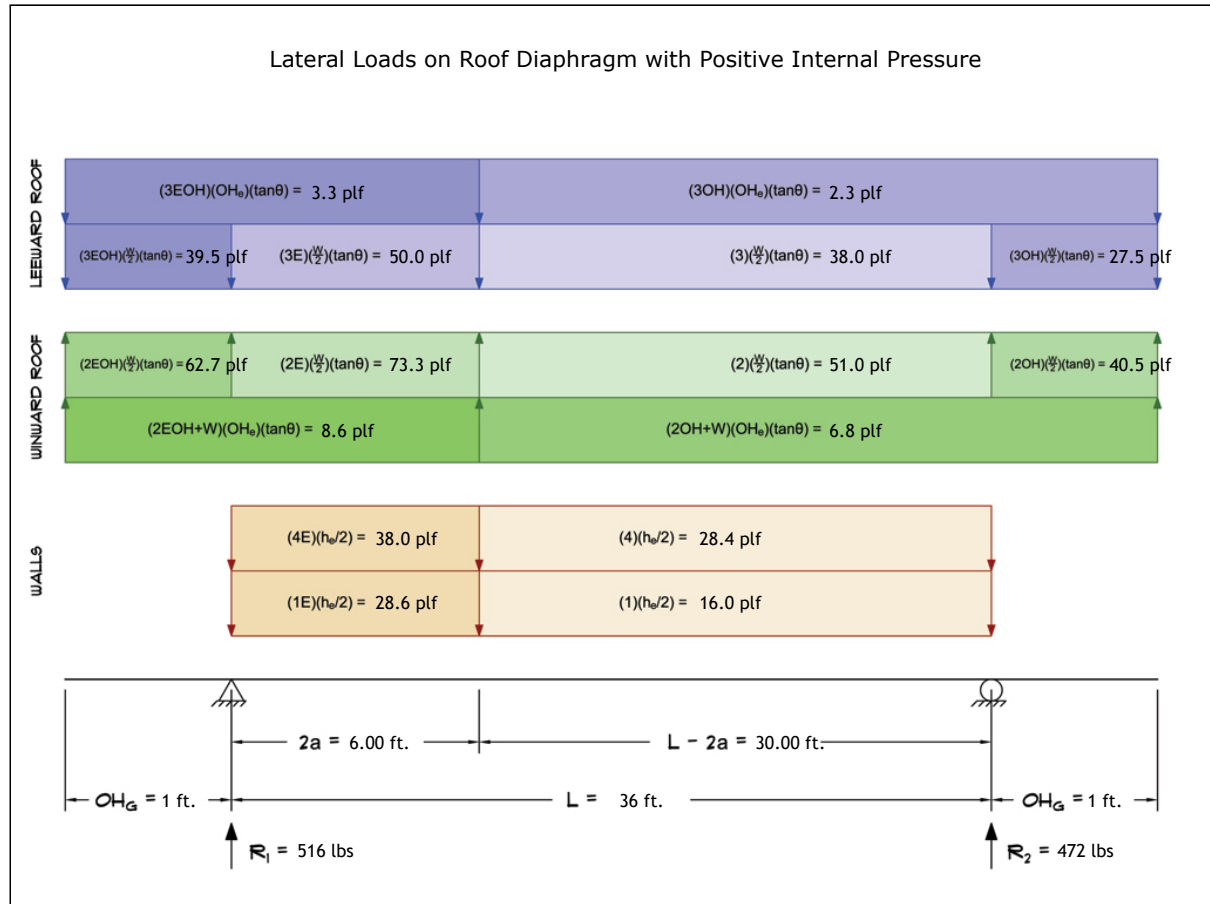


This report may not be copied, reproduced or distributed without the written consent of DSN Design Sales and Services LLC

Copyright © 2025

5. Wind Load Calculations

1.) Lateral Loads - Transverse Direction:



- a) (-) signs signify wind lateral forces acting opposite to the direction of the arrows shown.
b) Strength design values multiplied by 0.6 to obtain ASD values.

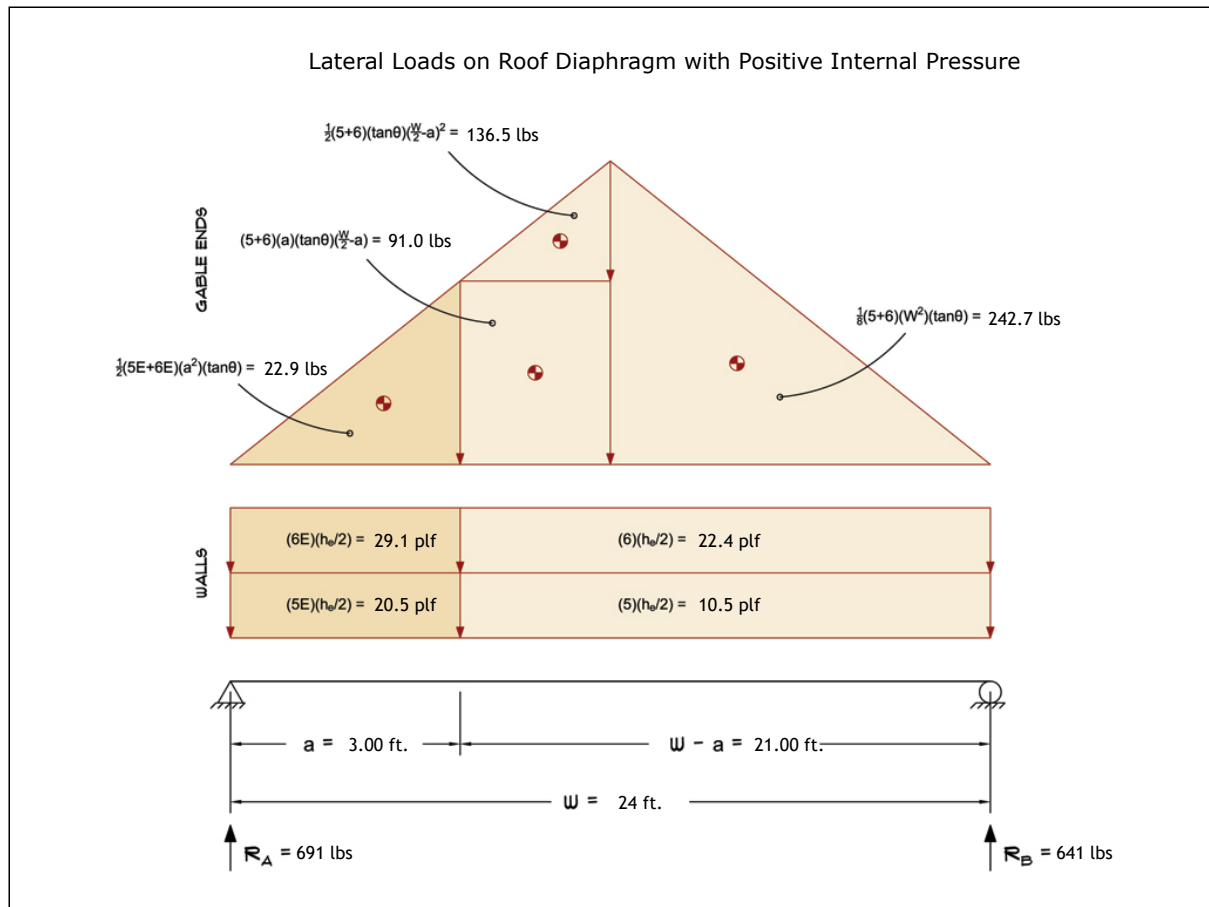
Wind Base Shear (ASD)						
Load Case A: Transverse Direction						
Load Case	Walls (lbs)	Roof (lbs)	Roof Overhangs (lbs)	Total Lateral Load (lbs)	R ₁ (lbs)	R ₂ (lbs)
Positive Internal Pressure	1731	-529	-213	989	516	472
Negative Internal Pressure	1731	-529	-213	989	516	472
Roof Pressure = 0	1731	0	0	1731	921	810
Min. Pressures (8 psf, 16 psf)	1123	691	99	1914	957	957

- a) Bottom half of wall neglected in tributary area calculations.
b) Strength design values multiplied by 0.6 to obtain ASD values.

Subject	Customer	Location	Job No.
Wind Loads	Max Boortz Boortz	1527 MT Vernon Ave	PB25-0178
Engr.	DSN Design Sales and Services LLC		Rev.
Date	315 N Sherwood Ave ph. 616-318-5654 www.dsndesign.net		-
5/1/2025			Page
			3

This report may not be copied, reproduced or distributed without the written consent of DSN Design Sales and Services LLC

2.) Lateral Loads - Longitudinal Direction:



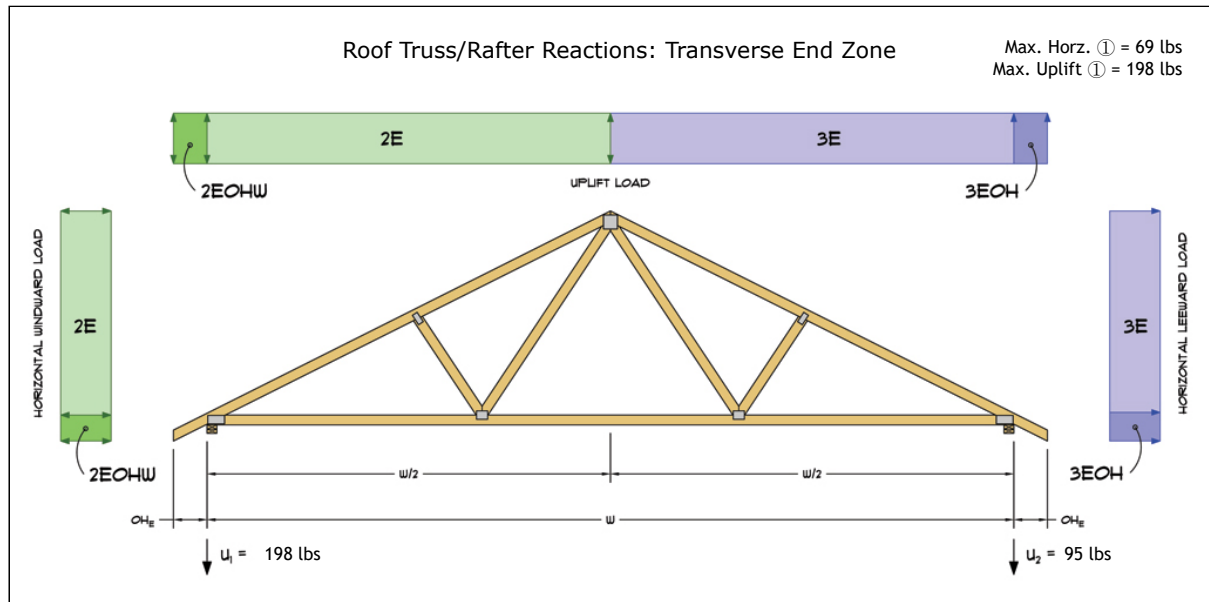
- a) (-) signs signify wind lateral forces acting opposite to the direction of the arrows shown.
b) Strength design values multiplied by 0.6 to obtain ASD values.
c) Where the length of building (L) exceeds 4X the mean roof height (h), wind drag forces should additionally be considered.

Wind Base Shear (ASD)						
Load Case B: Longitudinal Direction						
Load Case	Walls (lbs)	Gable Ends (lbs)	Roof (lbs)	Total Lateral Load (lbs)	R _A (lbs)	R _B (lbs)
Positive Internal Pressure	839	493	0	1332	691	641
Negative Internal Pressure	839	493	0	1332	691	641
Roof Pressure = 0	839	493	0	1332	691	641
Min. Pressures (8 psf, 16 psf)	749	461	0	1210	605	605

- a) Bottom half of wall neglected in tributary area calculations.
b) Strength design values multiplied by 0.6 to obtain ASD values.

Subject	Customer	Location	Job No.
Wind Loads	Max Boortz Boortz	1527 MT Vernon Ave	PB25-0178
Engr.	DSN Design Sales and Services LLC		Rev.
Date	315 N Sherwood Ave ph. 616-318-5654 www.dsndesign.net		-
5/1/2025			Page
			4

3.) Roof Truss Reactions:



- a) Strength design values multiplied by 0.6 to obtain ASD values.
b) Windward loads may be positive or negative depending on pitch of roof.

Roof Truss/Rafter Reactions (ASD)					
w/ Positive Internal Pressure					
Load Case	Horizontal Load (lbs)	Gross Uplift (lbs)	Net Uplift (lbs)	U_1 (lbs)	U_2 (lbs)
Transverse Int. Zone	35	589	70	69	2
Transverse End Zone	57	812	293	198	95
Longitudinal Int. Zone	41	531	12	39	-27
Longitudinal End Zone	69	736	218	165	53

- a) Gross Uplift calculations do not include any counteracting roof dead loads.
b) Net Uplift calculations include counteracting roof dead loads multiplied by 0.6 per load case (7) ASCE 7-10.
c) Strength design values multiplied by 0.6 to obtain ASD values for wind loads.
d) Loads based on truss spacing calculated at 24" o/c.
e) Negative values for horizontal load indicate load acting in windward direction (transverse load cases).
f) Negative values for uplift indicate net downward force (zero uplift).

*Disclaimer: The calculations produced herein are for initial design and estimating purposes only. The calculations and drawings presented do not constitute a fully engineered design. All of the potential load cases required to fully design an actual structure may not be provided by this calculator. For the design of an actual structure, a registered and licensed professional should be consulted as per IRC 2012 Sec. R802.10.2 and designed according to the minimum requirements of ASCE 7-10. The wind load calculations provided by this online tool are for educational and illustrative purposes only. Medeek Design assumes no liability or loss for any designs presented and does not guarantee fitness for use.

Subject	Wind Loads	Customer	Max Boortz Boortz	Location	1527 MT Vernon Ave	Job No.	PB25-0178
Engr.	Scott Newberg	DSN Design Sales and Services LLC				Rev.	-
Date	5/1/2025	315 N Sherwood Ave ph. 616-318-5654 www.dsndesign.net				Page	5



This report may not be copied, reproduced or distributed without the written consent of DSN Design Sales and Services LLC

Copyright © 2025