



# Wind Load Report - New House

## 1. Site & Building Data

Roof Type: Gable  
 Wind Speed (ult): 110 mph  
 Exposure Category: C  
 Enclosure Class: Enclosed  
 Building Width (W): 40 ft.  
 Building Length (L): 58 ft.  
 Eave Height (h<sub>e</sub>): 8 ft.  
 Foundation Height (h<sub>f</sub>): 0 ft.  
 Roof Pitch: 4 /12  
 Eave Overhang (OH<sub>e</sub>): 1.6 ft.  
 Gable Overhang (OH<sub>g</sub>): 1.6 ft.

## 2. Parameters & Coefficients

Topographic Factor (K<sub>zt</sub>): 1.0  
 Directionality Factor (K<sub>d</sub>): .85  
 Roof Angle (θ): 18.43 deg.  
 Mean Roof Height (h): 11.33 ft.  
 Ridge Height (h<sub>r</sub>): 14.67 ft.  
 Pos. Internal Pressure (+GCpi): +0.18  
 Neg. Internal Pressure (-GCpi): -0.18  
 Velocity Pressure Exp. Coeff. (K<sub>h</sub>): 0.85 @ z=h  
 Velocity Pressure (q<sub>h</sub>): 22.35 psf  
 End Zone Width (a): 3.00 ft.  
 Zone 2/2E Dist.: 20.00 ft.

## 3. Design Assumptions and Notes

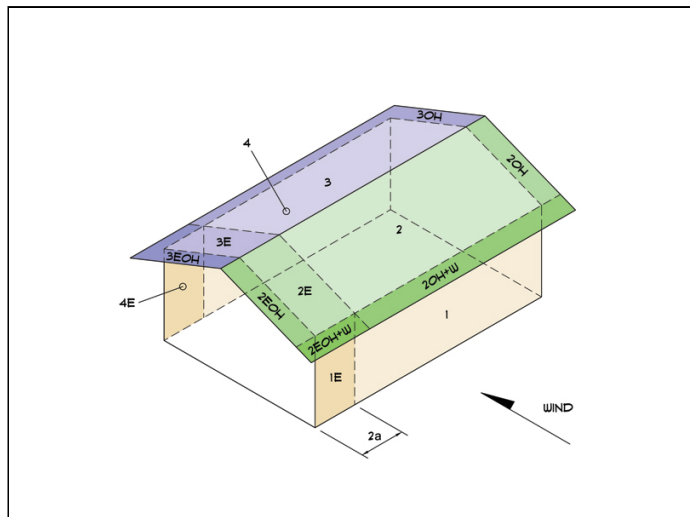
Code Standard: ASCE 7-10  
 Geometry: Regular-Shaped Bldg.  
 Height Class: Low-Rise Building  
 Notes:

## 4. Design Loads

Top Chord Dead Load: 7 psf  
 Bottom Chord Dead Load: 10 psf  
 Truss/Rafter Spacing: 24 in. o/c

## 4. Design Wind Pressures: MWFRS Envelope Procedure

Load Case A: Transverse Direction			
Surface	GCpf	Design Pressure (psf)	
		(w/ +GCpi)	(w/ -GCpi)
1	0.52	7.52	15.57
2	-0.69	-19.45	-11.40
3	-0.47	-14.49	-6.45
4	-0.42	-13.31	-5.26
1E	0.78	13.41	21.46
2E	-1.07	-27.94	-19.89
3E	-0.67	-19.07	-11.03
4E	-0.62	-17.84	-9.79
2OH	-0.69	-15.42	
2EOH	-1.07	-23.92	
3OH	-0.47	-10.47	
3EOH	-0.67	-15.05	
2OH+W	-0.69/-0.7	-31.07	
2EOH+W	-1.07/-0.7	-39.56	



- a) (+) and (-) signs signify wind pressures acting toward & away from surfaces.
- b) External Pressure Coefficients linearly interpolated from Fig. 28.4-1 ASCE 7-10.
- c) Design building for all wind directions, 4 load patterns per load case.
- d) Total horizontal shear shall not be less than that by neglecting roof wind forces.
- e) Min. wind load for enclosed or partially enclosed bldg.: 16 psf wall, 8 psf roof.
- f) Design pressures are for strength design, multiply by 0.6 for ASD.

Subject <b>Wind Loads</b>	Customer	Location <b>4347 Banning St.</b>	Job No. <b>40610</b>
Engr. <b>N. Wilkerson</b>	<b>MEDEEK ENGINEERING INC.</b> 3050 State Route 109 Copalis Beach, WA 98535 ph. (425) 420-5715 www.medeek.com		Rev. -
Date <b>6/11/2024</b>			 <p>This report may not be copied, reproduced or distributed without the written consent of Medeek Engineering Inc.</p>
Copyright © 2024			

### Load Case B: Longitudinal Direction

Surface	GCpf	Design Pressure (psf)	
		(w/ +GCpi)	(w/ -GCpi)
1	-0.45	-14.08	-6.03
2	-0.69	-19.45	-11.40
3	-0.37	-12.29	-4.25
4	-0.45	-14.08	-6.03
5	0.40	4.92	12.96
6	-0.29	-10.50	-2.46
1E	-0.48	-14.75	-6.71
2E	-1.07	-27.94	-19.89
3E	-0.53	-15.87	-7.82
4E	-0.48	-14.75	-6.71
5E	0.61	9.61	17.66
6E	-0.43	-13.63	-5.59
2OH	-0.69		-15.42
2EOH	-1.07		-23.92
3OH	-0.37		-8.27
3EOH	-0.53		-11.85
2EOH+W	-1.07/-0.7		-39.56
3EOH+W	-0.53/-0.7		-27.49



- a) (+) and (-) signs signify wind pressures acting toward & away from surfaces.
- b) External Pressure Coefficients linearly interpolated from Fig. 28.4-1 ASCE 7-10.
- c) Design building for all wind directions, 4 load patterns per load case.
- d) Total horizontal shear shall not be less than that by neglecting roof wind forces.
- e) Min. wind load for enclosed or partially enclosed bldg.: 16 psf wall, 8 psf roof.
- f) Design pressures are for strength design, multiply by 0.6 for ASD.

### Torsional Load Cases

Surface	Load Case	GCpf	Design Pressure (psf)	
			(w/ +GCpi)	(w/ -GCpi)
1T	A	-	1.88	3.89
2T	A	-	-4.86	-2.85
3T	A	-	-3.62	-1.61
4T	A	-	-3.33	-1.32
5T	B	-	1.23	3.24
6T	B	-	-2.63	-0.61



- a) (+) and (-) signs signify wind pressures acting toward & away from surfaces.
- b) Pressures designated with a "T" are 25% of full design wind pressures.
- c) Torsional loading shall apply to all 8 load patterns using the figures shown.
- d) Design pressures are for strength design, multiply by 0.6 for ASD.
- e) Torsional Design Exceptions: One story bldg. with  $h \leq 30$  ft.  
Two stories or less framed with light frame construction,  
Two stories or less with flexible diaphragms.

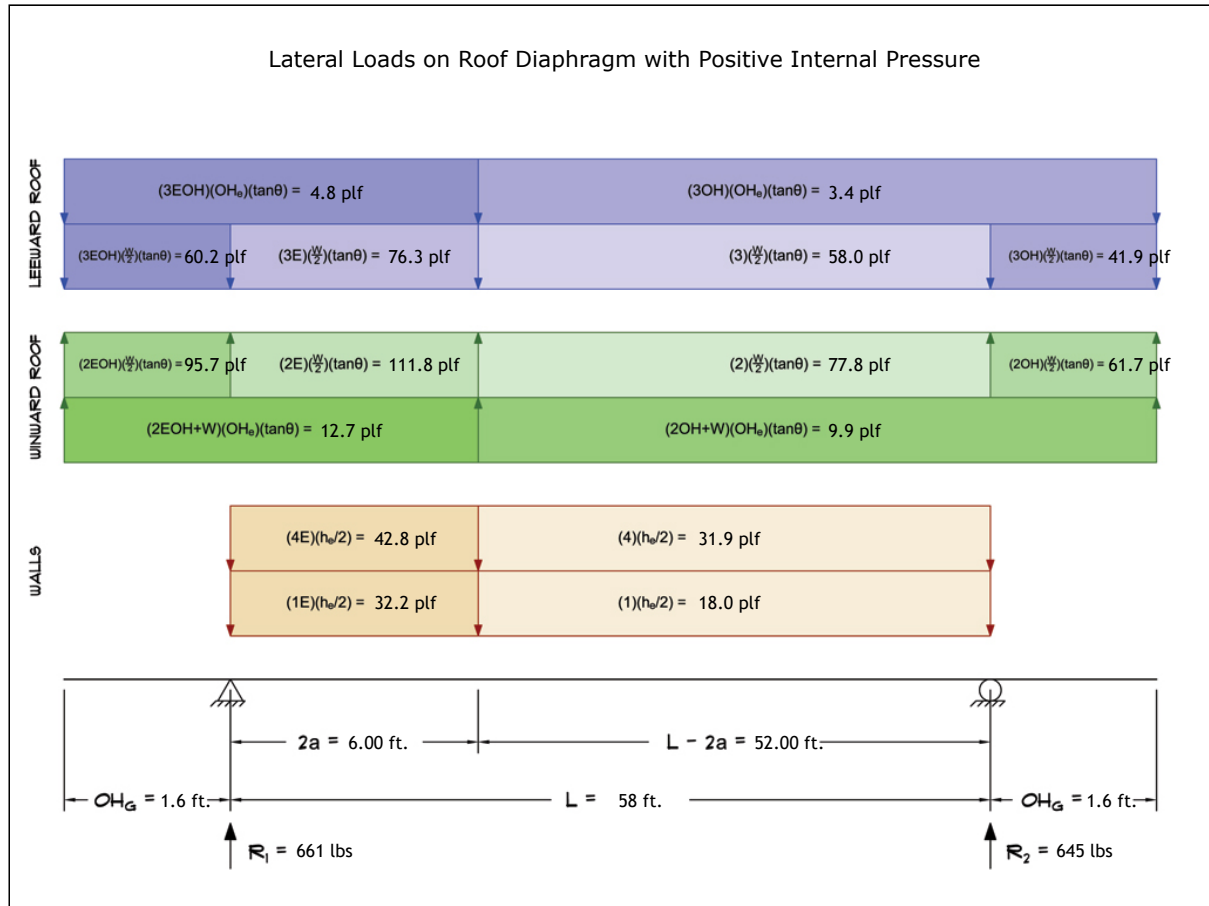
Subject	Customer	Location	Job No.
Wind Loads		4347 Banning St.	40610
Engr.	<b>MEDEEK ENGINEERING INC.</b> 3050 State Route 109 Copalis Beach, WA 98535 ph. (425) 420-5715 www.medeek.com		Rev.
Date			6/11/2024
			Page
			2



This report may not be copied, reproduced or distributed without the written consent of Medeek Engineering Inc.

## 5. Wind Load Calculations

### 1.) Lateral Loads - Transverse Direction:



- a) (-) signs signify wind lateral forces acting opposite to the direction of the arrows shown.  
 b) Strength design values multiplied by 0.6 to obtain ASD values.

Wind Base Shear (ASD)						
Load Case A: Transverse Direction						
Load Case	Walls (lbs)	Roof (lbs)	Roof Overhangs (lbs)	Total Lateral Load (lbs)	R <sub>1</sub> (lbs)	R <sub>2</sub> (lbs)
Positive Internal Pressure	3049	-1242	-501	1306	661	645
Negative Internal Pressure	3049	-1242	-501	1306	661	645
Roof Pressure = 0	3049	0	0	3049	1592	1457
Min. Pressures (8 psf, 16 psf)	2227	1856	259	4342	2171	2171

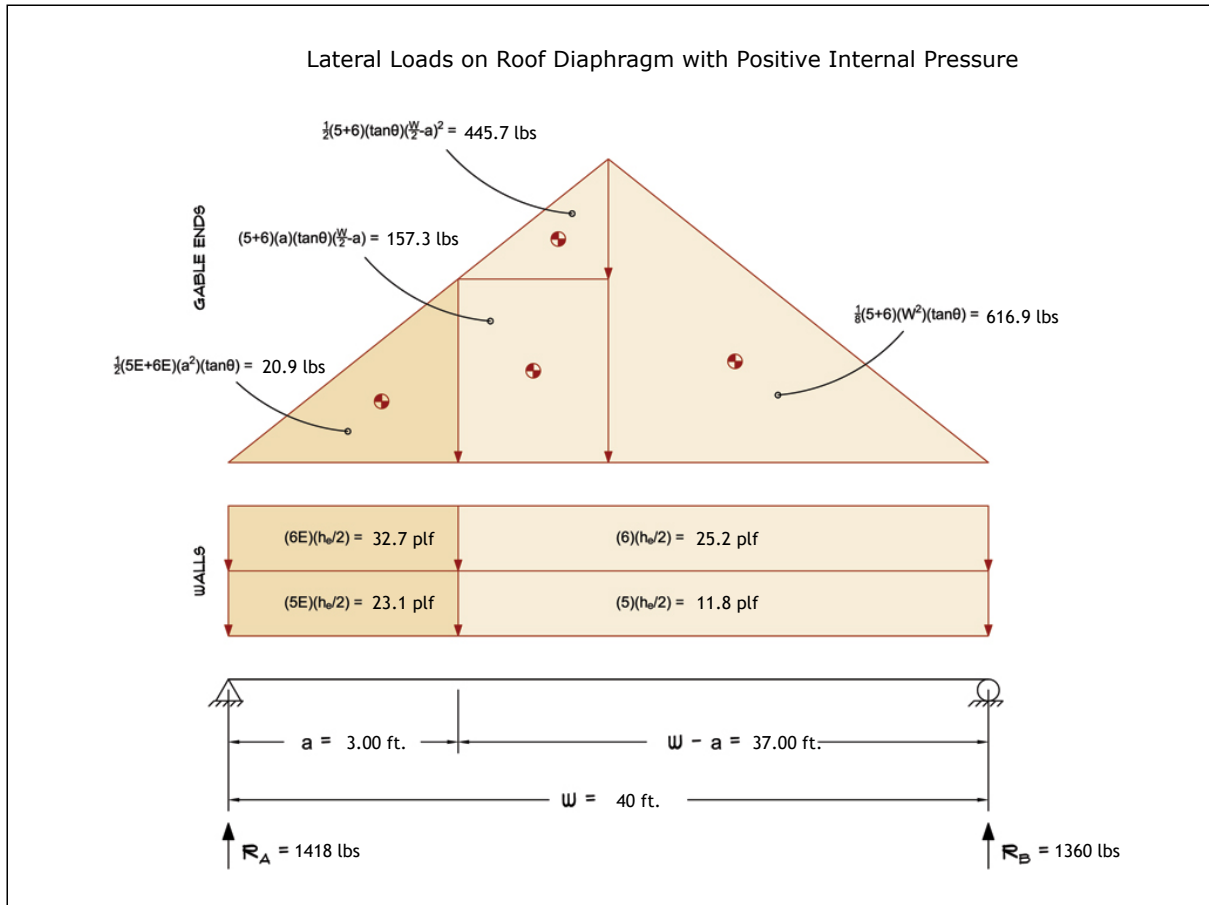
- a) Bottom half of wall neglected in tributary area calculations.  
 b) Strength design values multiplied by 0.6 to obtain ASD values.

Subject	Customer	Location	Job No.
Wind Loads		4347 Banning St.	40610
Engr.	MEDEEK ENGINEERING INC.		Rev.
N. Wilkerson	3050 State Route 109 Copalis Beach, WA 98535		-
Date	ph. (425) 420-5715 www.medeek.com		Page
6/11/2024			3



This report may not be copied, reproduced or distributed without the written consent of Medeek Engineering Inc.

2.) Lateral Loads - Longitudinal Direction:



- a) (-) signs signify wind lateral forces acting opposite to the direction of the arrows shown.
- b) Strength design values multiplied by 0.6 to obtain ASD values.
- c) Where the length of building (L) exceeds 4X the mean roof height (h), wind drag forces should additionally be considered.

Wind Base Shear (ASD)						
Load Case B: Longitudinal Direction						
Load Case	Walls (lbs)	Gable Ends (lbs)	Roof (lbs)	Total Lateral Load (lbs)	R <sub>A</sub> (lbs)	R <sub>B</sub> (lbs)
Positive Internal Pressure	1537	1241	0	2778	1418	1360
Negative Internal Pressure	1537	1241	0	2778	1418	1360
Roof Pressure = 0	1537	1241	0	2778	1418	1360
Min. Pressures (8 psf, 16 psf)	1536	1280	0	2816	1408	1408

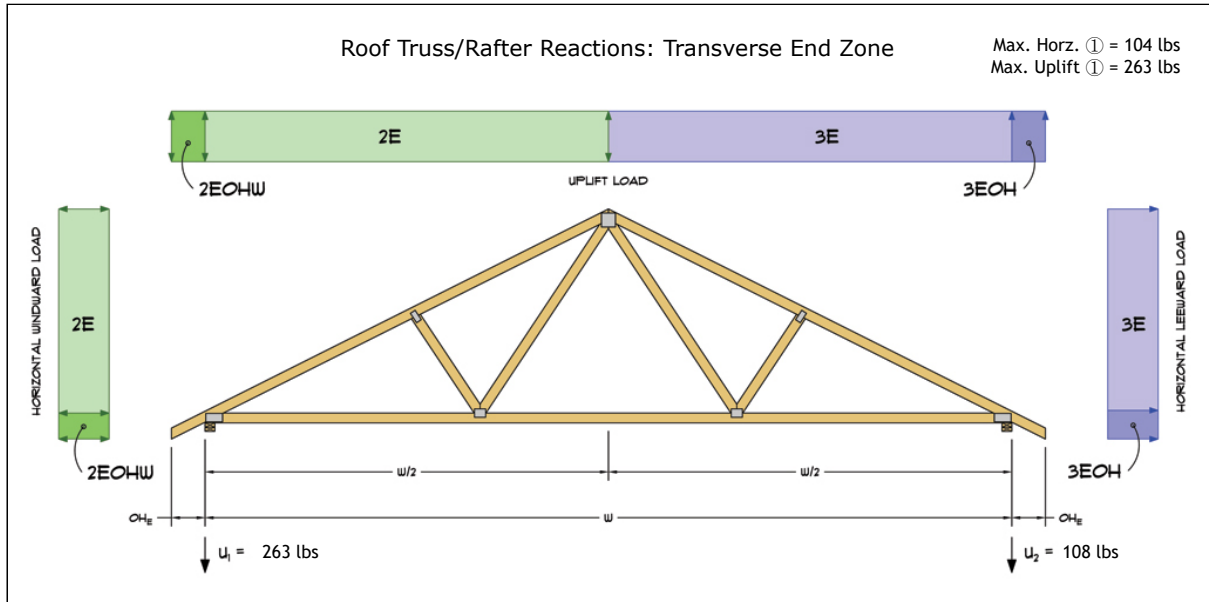
- a) Bottom half of wall neglected in tributary area calculations.
- b) Strength design values multiplied by 0.6 to obtain ASD values.

Subject <b>Wind Loads</b>	Customer	Location <b>4347 Banning St.</b>	Job No. <b>40610</b>
Engr. <b>N. Wilkerson</b>	<b>MEDEEK ENGINEERING INC.</b> 3050 State Route 109 Copalis Beach, WA 98535 ph. (425) 420-5715 www.medeek.com		Rev. -
Date <b>6/11/2024</b>			Page <b>4</b>



This report may not be copied, reproduced or distributed without the written consent of Medeek Engineering Inc.

3.) Roof Truss Reactions:



- a) Strength design values multiplied by 0.6 to obtain ASD values.
- b) Windward loads may be positive or negative depending on pitch of roof.

Roof Truss/Rafter Reactions (ASD)					
w/ Positive Internal Pressure					
Load Case	Horizontal Load (lbs)	Gross Uplift (lbs)	Net Uplift (lbs)	U <sub>1</sub> (lbs)	U <sub>2</sub> (lbs)
Transverse Int. Zone	53	894	32	66	-34
Transverse End Zone	87	1233	371	263	108
Longitudinal Int. Zone	62	807	-55	22	-78
Longitudinal End Zone	104	1120	258	213	44

- a) Gross Uplift calculations do not include any counteracting roof dead loads.
- b) Net Uplift calculations include counteracting roof dead loads multiplied by 0.6 per load case (7) ASCE 7-10.
- c) Strength design values multiplied by 0.6 to obtain ASD values for wind loads.
- d) Loads based on truss spacing calculated at 24" o/c.
- e) Negative values for horizontal load indicate load acting in windward direction (transverse load cases).
- f) Negative values for uplift indicate net downward force (zero uplift).

\*Disclaimer: The calculations produced herein are for initial design and estimating purposes only. The calculations and drawings presented do not constitute a fully engineered design. All of the potential load cases required to fully design an actual structure may not be provided by this calculator. For the design of an actual structure, a registered and licensed professional should be consulted as per IRC 2012 Sec. R802.10.2 and designed according to the minimum requirements of ASCE 7-10. The wind load calculations provided by this online tool are for educational and illustrative purposes only. Medeek Design assumes no liability or loss for any designs presented and does not guarantee fitness for use.

Subject	Wind Loads	Customer	Location	4347 Banning St.	Job No.	40610	
Engr.	N. Wilkerson	<b>MEDEEK ENGINEERING INC.</b> 3050 State Route 109 Copalis Beach, WA 98535 ph. (425) 420-5715 www.medeek.com				Rev.	-
Date	6/11/2024					Page	5
Copyright © 2024							

This report may not be copied, reproduced or distributed without the written consent of Medeek Engineering Inc.