



Snow Load Report

1. Roof and Building Data

Ground Snow Load (Pg): 60.0 psf
Roof Pitch: 6 /12
Risk Category: II
Eave-to-Ridge (W): 19 ft.
Terrain Category: B
Exposure: Partially Exposed
Thermal Factor (C_t): 1.10
Roof Surface: Asphalt Shingles
Roof System: Common Truss
Spacing: 24 in. o/c
Overhang: 12 in.

2. Design Loads

Top Chord Dead Load: 7 psf
Bottom Chord Dead Load: 10 psf
SF (Slope Factor) = $1/\text{Cosine}(\Phi) = 1.12$ (Dead loads specified on a projected horizontal basis take into account the effect of the pitch via a slope factor.)
Adj. TCDL (TCDL x SF): 7.8 psf

3. Design Assumptions

Code Standard: ASCE 7-10
Number of Plies: 1 PLY
Bottom Chord Pitch: 0 /12

4. Snow Load Calculations

Calculate flat roof snow load p_f using the following equation:

$$p_f = 0.7C_eC_tI_s p_g$$

where:

p_f = Flat Roof Snow Load in psf

C_e = 1.00 = Exposure Factor, as determined by ASCE 7-10 Table 7-2 (Terrain Cat. B, Exp. Partially Exposed)

C_t = 1.10 = Thermal Factor, as determined by ASCE 7-10 Table 7-3

I_s = 1.00 = Importance Factor, as determined by ASCE 7-10 Table 1.5-2 (Risk Cat. II)

p_g = 60.0 psf = Ground Snow Load in psf

$$p_f = 0.7C_eC_tI_s p_g = 0.7(1.00)(1.10)(1.00)(60.0) = 46.2 \text{ psf}$$

Subject Snow Loads	Customer Charles Hunter	Location 217 E Division St	Job No. ERRA
Engr. Charles Hunter	HUNTER ENGINEERING & DESIGN 217E Division St. ph. 715-479-4889 www.website.com		Rev. -
Date 5/1/2025	 This report may not be copied, reproduced or distributed without the written consent of Hunter Engineering & Design Copyright © 2025		Page 1

A minimum roof snow load, p_m shall apply to monoslope, hip and gable roofs with slopes less than 15 degrees using the following equations:

Where p_g is 20 psf or less: $p_m = I_s p_g$

Where p_g exceeds 20 psf: $p_m = I_s(20)$

Roof slope is greater than 15 degrees, the minimum roof snow load, p_m , does not apply.

For locations where p_g is 20 psf or less, but not zero, all roofs with slopes (in degrees) less than $W/50$ with W in feet shall included a 5 psf rain-on-snow surcharge load. This additional load applies only to the sloped roof (balanced) load case and need not be used in combination with drift, sliding, unbalanced, minimum, or partial loads.

Roof slope in degrees (26.57°) is greater than $W/50 = 0.4$, the 5.0 psf rain-on-snow surcharge load does not apply.

Calculate sloped roof snow load p_s using the following equation:

$$p_s = C_s p_f$$

where:

p_s = Sloped Roof Snow Load in psf

$C_s = 1.00$ = Roof Slope Factor, as determined by ASCE 7-10 Sec. 7.4.1-7.4.4 and Figure 7-2

p_f = Flat Roof Snow Load in psf

Roof surface (Asphalt Shingles) is considered a "non-slippery" roof. For a $C_t = 1.10$ the roof slope factor C_s is given by the solid line of ASCE 7-10 Figure 7-2b.

$$p_s = C_s p_f = (1.00)(46.2) = 46.2 \text{ psf}$$

Calculate unbalanced snow load for hip and gable roofs as shown in ASCE 7-10 Figure 7-5.

Unbalanced snow loads are required for roof pitches between 1/2 on 12 to 7 on 12.

Using the following equations:

$$\gamma = 0.13 p_g + 14 \text{ (snow density)}$$

$$h_d = .43 \sqrt[4]{l_u} \sqrt{p_g} + 10 - 1.5 \text{ (drift height) [if } l_u < 20 \text{ ft., use } l_u = 20 \text{ ft.]}$$

$$l_d = \frac{8}{3} h_d \sqrt{S} \text{ (width of drift surcharge)}$$

$$p_d = h_d \gamma / \sqrt{S} \text{ (drift surcharge snow load)}$$

where:

γ = Snow density in pcf, not to exceed 30 pcf.

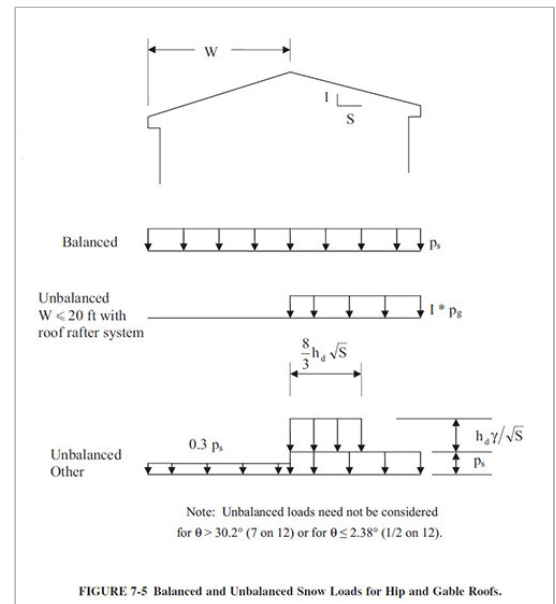
h_d = Drift height in feet, as determined by eqn. or ASCE 7-10 Fig. 7-9.

l_u = W = Ridge to eave distance in feet, windward side of roof.

S = 12/Roof Pitch

l_d = Width of drift surcharge in feet.

p_d = Drift Surcharge Snow Load in psf



Subject	Customer	Location	Job No.
Snow Loads	Charles Hunter	217 E Division St	ERRA
Engr.	HUNTER ENGINEERING & DESIGN 217E Division St. ph. 715-479-4889 www.website.com		Rev.
Date			-
5/1/2025	 This report may not be copied, reproduced or distributed without the written consent of Hunter Engineering & Design Copyright © 2025		Page
			2

$$p_{\text{windward}} = 0.3p_s = (0.3)(46.2) = 13.9 \text{ psf}$$

$$p_{\text{leeward}} = p_s = 46.2 \text{ psf}$$

$$\gamma = 0.13(60.0) + 14 = 21.80 \text{ pcf}$$

$$h_d = .43 \sqrt[3]{20} \sqrt[4]{60.0 + 10} - 1.5 = 1.88 \text{ ft. } [l_u = 20 \text{ ft.}]$$

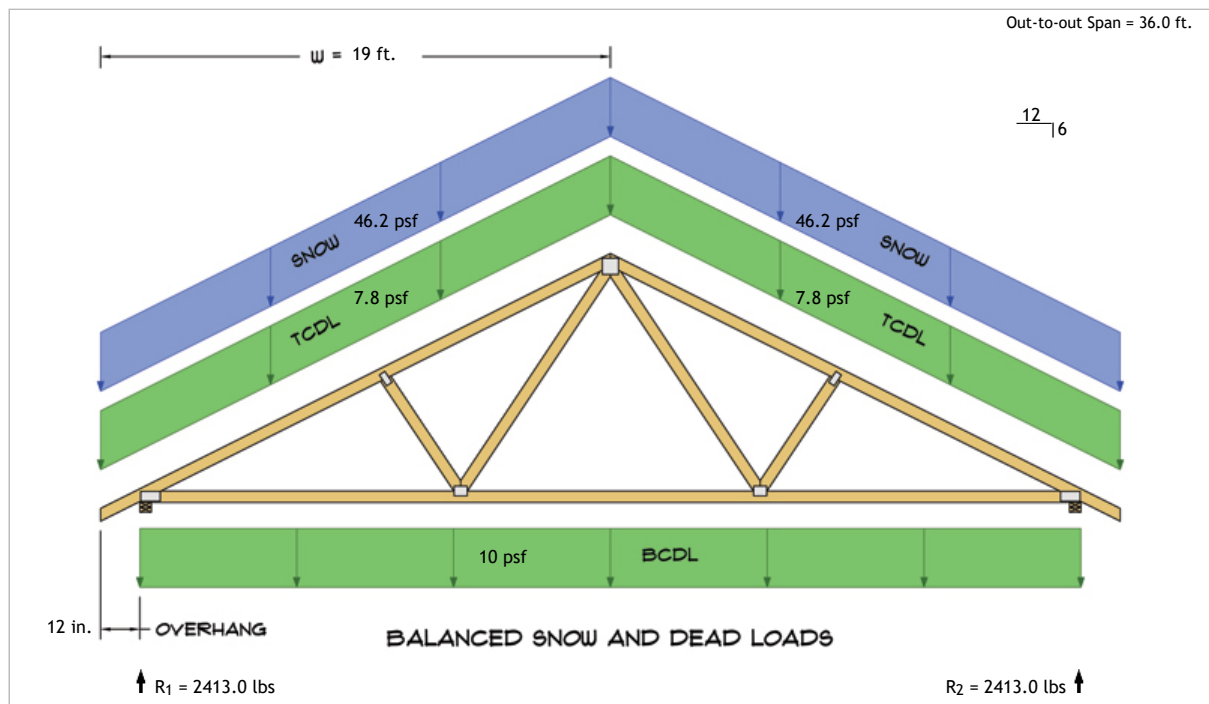
$$l_d = \frac{8}{3} \times 1.88 \times \sqrt{12/6} = 7.08 \text{ ft.}$$

$$p_d = \frac{1.88 \times 21.80}{\sqrt{12/6}} = 28.9 \text{ psf}$$

On warm roofs apply a distributed $2p_f$ snow load on all overhanging portions as per ASCE 7-10 section 7.4.5.

No other loads except dead loads shall be present on the roof when this uniformly distributed load is applied.

$$2p_f = (2)(46.2) = 92.4 \text{ psf}$$



$$R_1 = D + S = 657.4 \text{ lbs} + 1755.6 \text{ lbs}$$

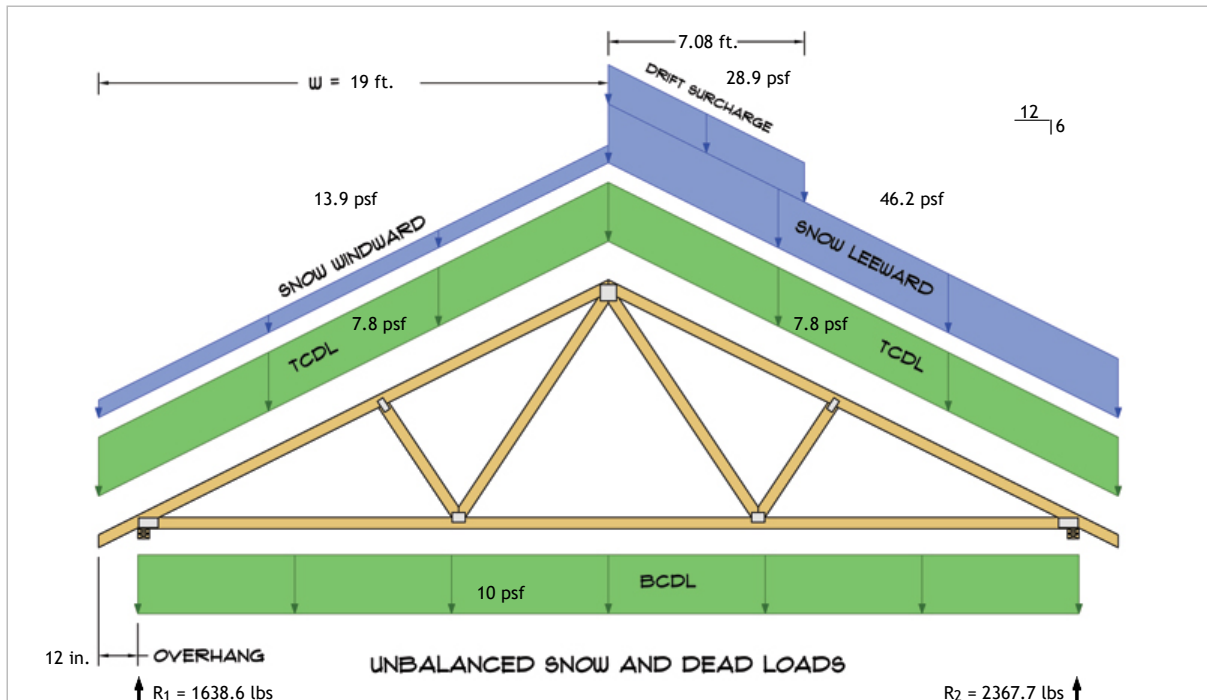
$$R_2 = D + S = 657.4 \text{ lbs} + 1755.6 \text{ lbs}$$

Subject	Snow Loads	Customer	Charles Hunter	Location	217 E Division St	Job No.	ERRA
Engr.	Charles Hunter	HUNTER ENGINEERING & DESIGN 217E Division St. ph. 715-479-4889 www.website.com				Rev.	-
Date	5/1/2025					Page	3



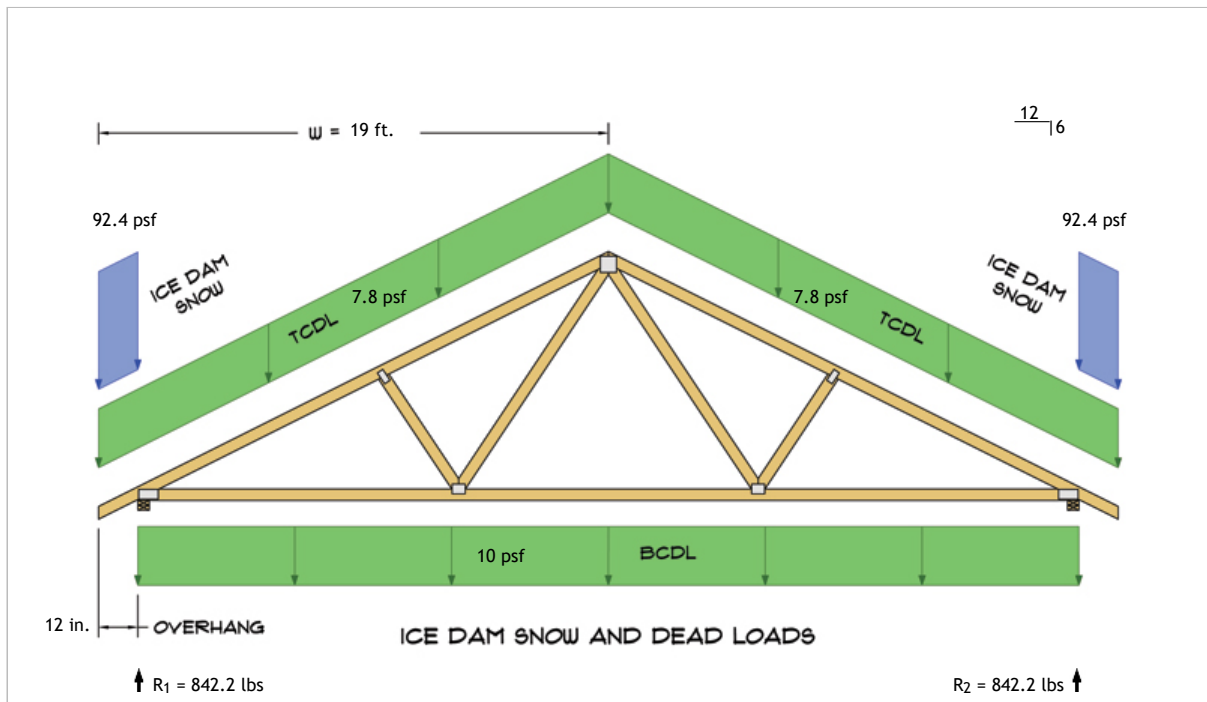
This report may not be copied, reproduced or distributed without the written consent of Hunter Engineering & Design

Copyright © 2025



$$R_1 = D + S = 657.4 \text{ lbs} + 981.2 \text{ lbs}$$

$$R_2 = D + S = 657.4 \text{ lbs} + 1710.3 \text{ lbs}$$



$$R_1 = D + S = 657.4 \text{ lbs} + 184.8 \text{ lbs}$$

$$R_2 = D + S = 657.4 \text{ lbs} + 184.8 \text{ lbs}$$

Subject	Snow Loads	Customer	Charles Hunter	Location	217 E Division St	Job No.	ERRA
Engr.	Charles Hunter	HUNTER ENGINEERING & DESIGN 217E Division St. ph. 715-479-4889 www.website.com				Rev.	-
Date	5/1/2025					Page	4



This report may not be copied, reproduced or distributed without the written consent of Hunter Engineering & Design

Copyright © 2025