

**CODE NOTES:**

- MODEL CODE 2012 IBC
- QUARTER 2: INTERIOR BEARING/NON-BEARING WALLS ALLOWED TO BE NON-RATED, COMBUSTIBLE
- QUARTER 3: INTERIOR BEARING/NON-BEARING WALLS ALLOWED TO BE NON-RATED, COMBUSTIBLE
- QUARTER 4: INTERIOR BEARING/NON-BEARING WALLS ALLOWED TO BE NON-RATED, COMBUSTIBLE
- QUARTER 5: INTERIOR BEARING/NON-BEARING WALLS ALLOWED TO BE NON-RATED, COMBUSTIBLE
- QUARTER 6: INTERIOR BEARING/NON-BEARING WALLS ALLOWED TO BE NON-RATED, COMBUSTIBLE
- QUARTER 7: INTERIOR BEARING/NON-BEARING WALLS ALLOWED TO BE NON-RATED, COMBUSTIBLE
- QUARTER 8: INTERIOR BEARING/NON-BEARING WALLS ALLOWED TO BE NON-RATED, COMBUSTIBLE
- QUARTER 9: INTERIOR BEARING/NON-BEARING WALLS ALLOWED TO BE NON-RATED, COMBUSTIBLE
- QUARTER 10: INTERIOR BEARING/NON-BEARING WALLS ALLOWED TO BE NON-RATED, COMBUSTIBLE
- QUARTER 11: INTERIOR BEARING/NON-BEARING WALLS ALLOWED TO BE NON-RATED, COMBUSTIBLE
- QUARTER 12: INTERIOR BEARING/NON-BEARING WALLS ALLOWED TO BE NON-RATED, COMBUSTIBLE
- QUARTER 13: INTERIOR BEARING/NON-BEARING WALLS ALLOWED TO BE NON-RATED, COMBUSTIBLE
- QUARTER 14: INTERIOR BEARING/NON-BEARING WALLS ALLOWED TO BE NON-RATED, COMBUSTIBLE
- QUARTER 15: INTERIOR BEARING/NON-BEARING WALLS ALLOWED TO BE NON-RATED, COMBUSTIBLE
- QUARTER 16: INTERIOR BEARING/NON-BEARING WALLS ALLOWED TO BE NON-RATED, COMBUSTIBLE
- QUARTER 17: INTERIOR BEARING/NON-BEARING WALLS ALLOWED TO BE NON-RATED, COMBUSTIBLE
- QUARTER 18: INTERIOR BEARING/NON-BEARING WALLS ALLOWED TO BE NON-RATED, COMBUSTIBLE
- QUARTER 19: INTERIOR BEARING/NON-BEARING WALLS ALLOWED TO BE NON-RATED, COMBUSTIBLE
- QUARTER 20: INTERIOR BEARING/NON-BEARING WALLS ALLOWED TO BE NON-RATED, COMBUSTIBLE

**FIRE PROTECTION NOTES:**

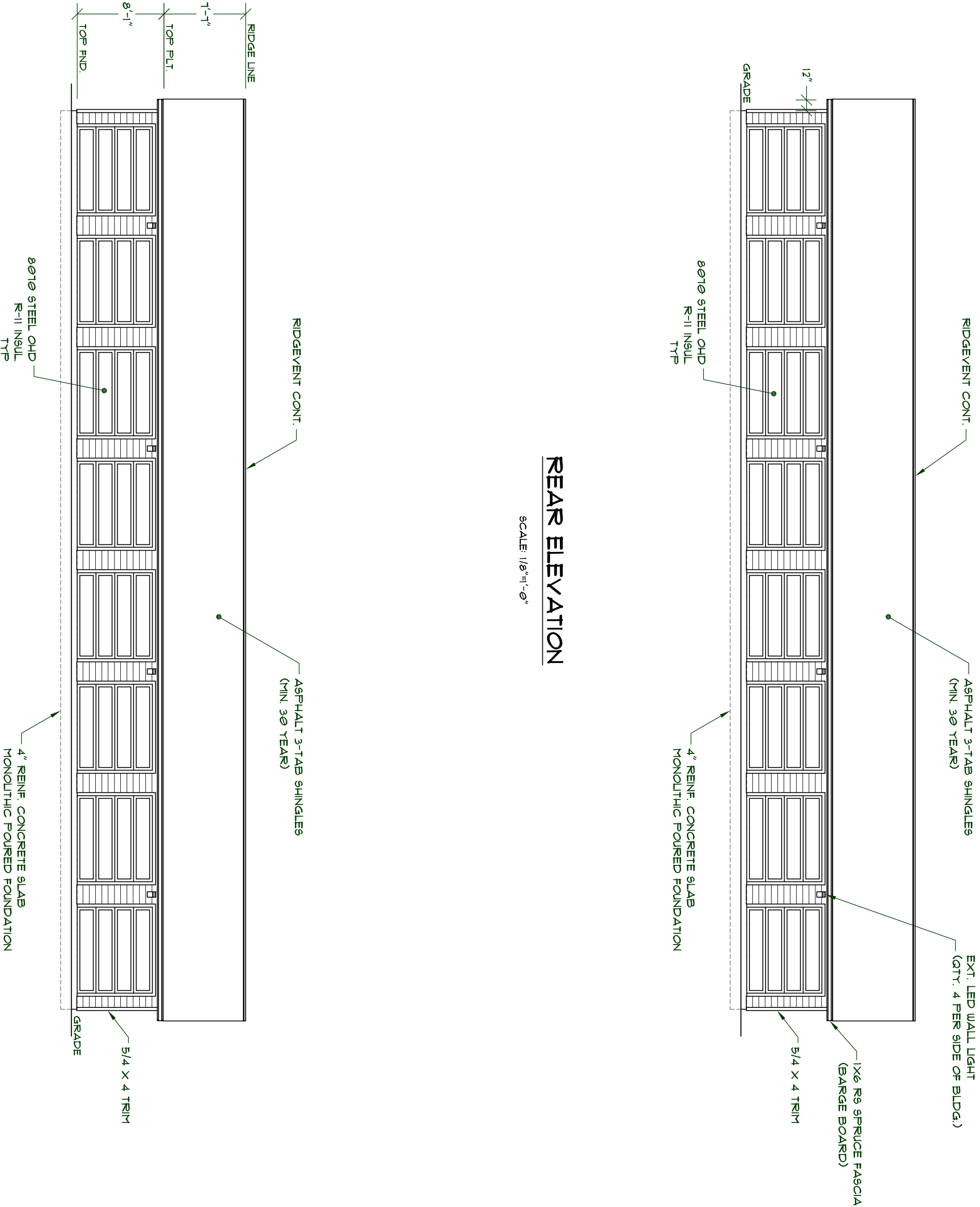
- MODEL CODE 2012 IBC AND 2013 NFPA 101
- FIRE EXTINGUISHERS SHALL BE MADE AVAILABLE DURING CONSTRUCTION, ATTERATION OR DEMOLITION PER IBC 2012 SEC. 3315.1
- QUARTER 3: PRIMARY FIRE HAZARD: CLASS A (ORDINARY COMBUSTIBLES)
- HAZARD OCCUPANCY: LIGHT
- PORTABLE FIRE EXTINGUISHER MINIMUM RATING: 2A: 1B
- MAX. TRAVEL DISTANCE: 75 FT. > 45 FT. - OK
- SPECIAL HAZARD AREAS: STORAGE UNITS
- QUARTER 4: FIRE EXTINGUISHERS SHALL BE MADE AVAILABLE DURING CONSTRUCTION, ATTERATION OR DEMOLITION PER IBC 2012 SEC. 3315.1
- QUARTER 5: PRIMARY FIRE HAZARD: CLASS A (ORDINARY COMBUSTIBLES)
- HAZARD OCCUPANCY: LIGHT
- PORTABLE FIRE EXTINGUISHER MINIMUM RATING: 2A: 1B
- MAX. TRAVEL DISTANCE: 75 FT. > 45 FT. - OK
- SPECIAL HAZARD AREAS: STORAGE UNITS
- QUARTER 6: FIRE EXTINGUISHERS SHALL BE MADE AVAILABLE DURING CONSTRUCTION, ATTERATION OR DEMOLITION PER IBC 2012 SEC. 3315.1
- QUARTER 7: PRIMARY FIRE HAZARD: CLASS A (ORDINARY COMBUSTIBLES)
- HAZARD OCCUPANCY: LIGHT
- PORTABLE FIRE EXTINGUISHER MINIMUM RATING: 2A: 1B
- MAX. TRAVEL DISTANCE: 75 FT. > 45 FT. - OK
- SPECIAL HAZARD AREAS: STORAGE UNITS
- QUARTER 8: FIRE EXTINGUISHERS SHALL BE MADE AVAILABLE DURING CONSTRUCTION, ATTERATION OR DEMOLITION PER IBC 2012 SEC. 3315.1
- QUARTER 9: PRIMARY FIRE HAZARD: CLASS A (ORDINARY COMBUSTIBLES)
- HAZARD OCCUPANCY: LIGHT
- PORTABLE FIRE EXTINGUISHER MINIMUM RATING: 2A: 1B
- MAX. TRAVEL DISTANCE: 75 FT. > 45 FT. - OK
- SPECIAL HAZARD AREAS: STORAGE UNITS
- QUARTER 10: FIRE EXTINGUISHERS SHALL BE MADE AVAILABLE DURING CONSTRUCTION, ATTERATION OR DEMOLITION PER IBC 2012 SEC. 3315.1
- QUARTER 11: PRIMARY FIRE HAZARD: CLASS A (ORDINARY COMBUSTIBLES)
- HAZARD OCCUPANCY: LIGHT
- PORTABLE FIRE EXTINGUISHER MINIMUM RATING: 2A: 1B
- MAX. TRAVEL DISTANCE: 75 FT. > 45 FT. - OK
- SPECIAL HAZARD AREAS: STORAGE UNITS
- QUARTER 12: FIRE EXTINGUISHERS SHALL BE MADE AVAILABLE DURING CONSTRUCTION, ATTERATION OR DEMOLITION PER IBC 2012 SEC. 3315.1
- QUARTER 13: PRIMARY FIRE HAZARD: CLASS A (ORDINARY COMBUSTIBLES)
- HAZARD OCCUPANCY: LIGHT
- PORTABLE FIRE EXTINGUISHER MINIMUM RATING: 2A: 1B
- MAX. TRAVEL DISTANCE: 75 FT. > 45 FT. - OK
- SPECIAL HAZARD AREAS: STORAGE UNITS
- QUARTER 14: FIRE EXTINGUISHERS SHALL BE MADE AVAILABLE DURING CONSTRUCTION, ATTERATION OR DEMOLITION PER IBC 2012 SEC. 3315.1
- QUARTER 15: PRIMARY FIRE HAZARD: CLASS A (ORDINARY COMBUSTIBLES)
- HAZARD OCCUPANCY: LIGHT
- PORTABLE FIRE EXTINGUISHER MINIMUM RATING: 2A: 1B
- MAX. TRAVEL DISTANCE: 75 FT. > 45 FT. - OK
- SPECIAL HAZARD AREAS: STORAGE UNITS
- QUARTER 16: FIRE EXTINGUISHERS SHALL BE MADE AVAILABLE DURING CONSTRUCTION, ATTERATION OR DEMOLITION PER IBC 2012 SEC. 3315.1
- QUARTER 17: PRIMARY FIRE HAZARD: CLASS A (ORDINARY COMBUSTIBLES)
- HAZARD OCCUPANCY: LIGHT
- PORTABLE FIRE EXTINGUISHER MINIMUM RATING: 2A: 1B
- MAX. TRAVEL DISTANCE: 75 FT. > 45 FT. - OK
- SPECIAL HAZARD AREAS: STORAGE UNITS
- QUARTER 18: FIRE EXTINGUISHERS SHALL BE MADE AVAILABLE DURING CONSTRUCTION, ATTERATION OR DEMOLITION PER IBC 2012 SEC. 3315.1
- QUARTER 19: PRIMARY FIRE HAZARD: CLASS A (ORDINARY COMBUSTIBLES)
- HAZARD OCCUPANCY: LIGHT
- PORTABLE FIRE EXTINGUISHER MINIMUM RATING: 2A: 1B
- MAX. TRAVEL DISTANCE: 75 FT. > 45 FT. - OK
- SPECIAL HAZARD AREAS: STORAGE UNITS
- QUARTER 20: FIRE EXTINGUISHERS SHALL BE MADE AVAILABLE DURING CONSTRUCTION, ATTERATION OR DEMOLITION PER IBC 2012 SEC. 3315.1

SHEET INDEX	
1	ELEVATIONS
2	FOUNDATION PLAN
3	FLOOR PLAN
4	CROSS SECTIONS & DETAILS
5	ROOF FRAMING PLAN
6	FASTENER SCHEDULE
51	STRUCTURAL DETAILS

**PROJECT INFORMATION**

APPLICANT: SELF STORAGE INC.  
 JOHN SMITH  
 500 N STATE STREET  
 CITY, CA 95609 PH: (925) 999-0999

PARCEL: 9999999999  
 ZONING: M-100  
 LOCATION: TOWNSHIP 09, RANGE 09, SECTION 09



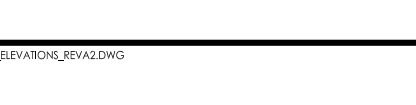
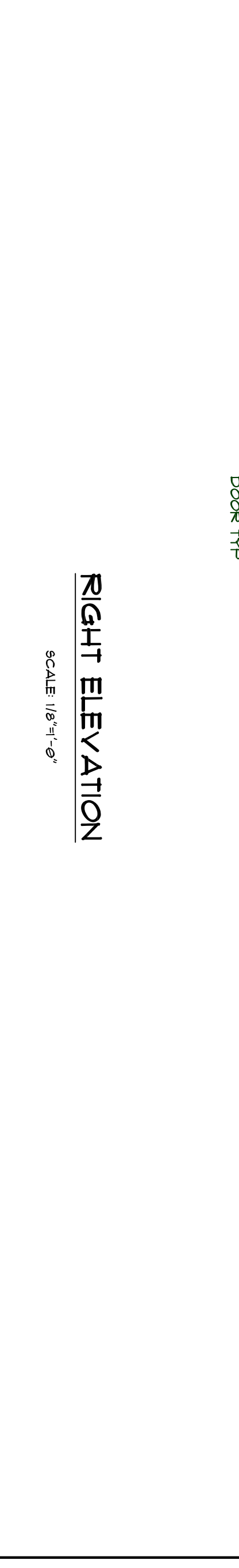
**BUILDING DATA**

LENGTH: 83'-1 1/2"  
 WIDTH: 42'-10 1/2"  
 GRADE TO RIDGE HEIGHT: 9'-4"  
 EAVE HEIGHT: 8'-1"  
 TOTAL AREA: 3,595 SQFT

SHEET INDEX	
1	ELEVATIONS
2	FOUNDATION PLAN
3	FLOOR PLAN
4	CROSS SECTIONS & DETAILS
5	ROOF FRAMING PLAN
6	FASTENER SCHEDULE
51	STRUCTURAL DETAILS

**PROJECT INFORMATION**

APPLICANT: SELF STORAGE INC.  
 JOHN SMITH  
 500 N STATE STREET  
 CITY, CA 95609 PH: (925) 999-0999



REVISION HISTORY:	SHEET CONTENTS:	DESIGNED BY:	PLAN NO.
		NPW	STORAGE8443
			MINI-STORAGE BLDG.
			SCALE: 1/8"=1'-0"
			REVISION: A, 2

**ATTENTION!**

THE GENERAL CONTRACTOR SHALL BE RESPONSIBLE FOR OBTAINING ALL NECESSARY PERMITS AND APPROVALS FROM THE LOCAL AND STATE AUTHORITIES. THE CONTRACTOR SHALL BE RESPONSIBLE FOR OBTAINING ALL NECESSARY PERMITS AND APPROVALS FROM THE LOCAL AND STATE AUTHORITIES. THE CONTRACTOR SHALL BE RESPONSIBLE FOR OBTAINING ALL NECESSARY PERMITS AND APPROVALS FROM THE LOCAL AND STATE AUTHORITIES.

MEDEEK ENGINEERING Inc.  
 3030 SR 109 COPAULS BEACH, WA 98533  
 PH: (425) 492-5215  
 DISKON@MEDEEK.COM



ALL INFORMATION CONTAINED HEREIN IS THE PROPERTY OF MEDEEK ENGINEERING. IT IS TO BE USED ONLY FOR THE PROJECT AND LOCATION SPECIFICALLY IDENTIFIED HEREIN. ANY REUSE OR MODIFICATION OF THIS DOCUMENT IS STRICTLY PROHIBITED.