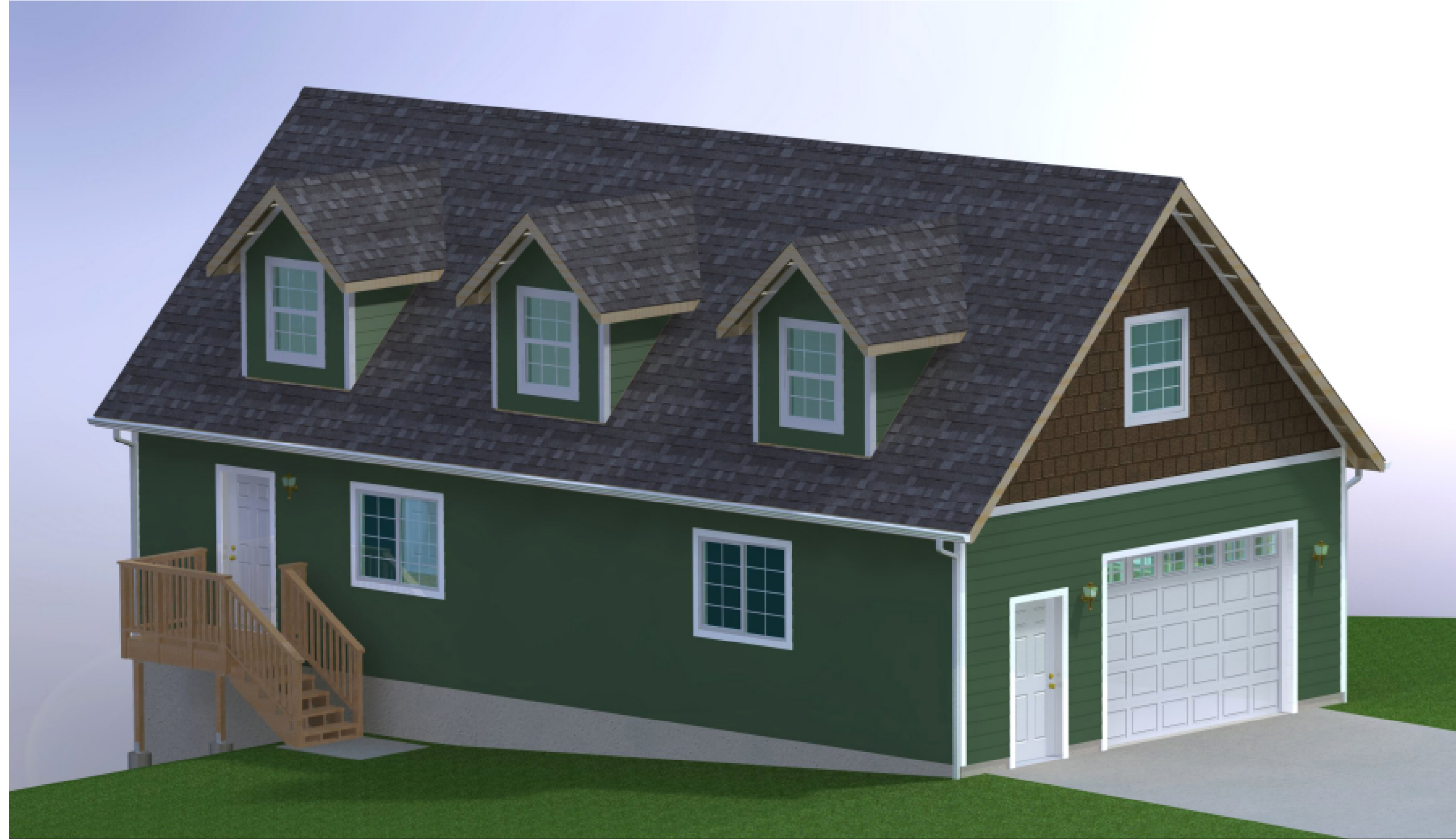


Bill of Materials for Plan: SHOP4824-A6DB	
Description	Quantity
Concrete and Rebar	
Concrete (min. comp. strength 3000 PSI)	54.3 cubic yards (min.)
#4 Rebar ASTM A-615 grade 60	1690 linear feet
1/2" DIA x 10" Anchor Bolts with Hex Nuts	38 pcs.
5/8" DIA x 10" Anchor Bolts with Hex Nuts (Wood Porch)	2 pcs.
2" x 2" x 3/16" Square Washers	38 pcs.
Framing	
2 x 6 x 120" HF/DF Exterior Garage Wall (Studs)	75 pcs.
2 x 6 x 104-1/2" HF/DF Exterior Office Wall (Studs)	78 pcs.
2 x 6 x 92-1/2" HF/DF Gable Wall (Studs)	32 pcs.
2 x 6 x 92-1/2" HF/DF Dormer Wall (Studs)	66 pcs.
2 x 6 x 104-1/2" HF/DF Interior Office Part. Wall (Studs)	22 pcs.
2 x 6 x 104-1/2" HF/DF Interior Bath Wet Wall (Studs)	8 pcs.
2 x 4 x 104-1/2" HF/DF Interior Bath Wall (Studs)	10 pcs.
2 x 4 x 104-1/2" HF/DF Interior Closet Wall (Studs)	13 pcs.
2 x 4 x 104-1/2" HF/DF Interior Stair Wall (Studs)	11 pcs.
2 x 8 HF/DF No. 2 Pressure Treated Bottom Plate	94 linear feet
2 x 6 HF/DF No. 2 Pressure Treated Bottom Plate	56 linear feet
2 x 10 HF/DF No. 2 Ladder Blocking (Attic Floor)	230 linear feet
2 x 6 HF/DF No. 2 Plates, Framing and Blocking	1325 linear feet
2 x 4 HF/DF No. 2 Plates, Framing and Blocking	495 linear feet
2 x 12 DF No. 1 Header	91 linear feet
2 x 10 DF No. 1 Header	23 linear feet
2 x 8 DF No. 1 Header	11 linear feet
2 x 6 DF No. 1 Header	19 linear feet
5-1/4" x 11-1/4" LVL Header 2.0E	13' length
5-1/4" x 11-7/8" PSL Girder 2.0E	24' length
6 x 6 x 96" DF No. 2 Post	2 pcs.
11-7/8" TJI 210 (24' length)	28 pcs.
11-7/8" x 1-1/4" LSL Rim Joist	96 linear feet
2 x 6 x 22-1/2" Roof Eave Blocking w/ screened vent holes	44 pcs.
2 x 4 x 22-1/2" Dormer Eave Blocking w/ screened vent holes	36 pcs.
Truss Package (see sheet 9 for details)	
12/12 Attic Truss (1 PLY)	10 ea.
12/12 Attic Truss (2 PLY)	1 ea.
12/12 Attic Truss (3 PLY)	6 ea.
12/12 Attic Truss (1 PLY - Gable)	2 ea.
Flooring and Sheathing	
3/4" T&G Advantech Flooring (4x8 sheet) - Attic Floor	712 sqft. - 24 sheets
3/4" or 7/8" T&G Advantech Flooring (4x8 sheet) - Main Floor	576 sqft. - 18 sheets
7/16" OSB Wall Sheathing (4x8 sheet)	1799 sqft. - 57 sheets
7/16" OSB or 15/32" 5 Ply CD Ext. Roof Sheathing (4x8 sheet)	2014 sqft. - 63 sheets
Stairs	
2 x 12 HF/DF No. 2 Stair Stringer (16' length)	4 pcs.
1" x 11-1/4" x 42" Stair Tread	13 pcs.
3/4" x 8" x 42" Stair Riser	13 pcs.
3/4" x 11-1/4" Skirt Board	34 linear feet
Handrail 1-1/2" DIA (16' length)	1 pc.
Handrail Support Brackets	2 pcs.
3-1/4" x 3-1/4" x 54" Newel Post	1 pc.
1-3/4" x 1-3/4" x 41" Baluster	14 pcs.
Balustrade Handrail (8' length)	1 pc.
Balustrade Shoerail (8' length)	1 pc.
Vapor Barriers	
15# Asphalt Saturated Felt (36" Wide Roll, 432 sqft/roll), walls	1799 sqft.
30# Asphalt Saturated Felt (36" Wide Roll, 216 sqft/roll), roof	2014 sqft.
.006" Black Polyethylene Vapor Barrier	1152 sqft.
Concrete Water Proof Asphalt Coating (below grade)	10 gal.
Roofing	
Architectural Asphalt Shingles [30 year]	1466 sqft.
Architectural Asphalt Shingles [30 year] (for dormers)	548 sqft.
13-1/4" Hip and Ridge	111 linear feet
11-1/4" Ridge Vent	51 linear feet
1-1/4" x 2-3/4" Hemmed Drip Edge 28 Gauge	317 linear feet

Description	Quantity
Siding	
5/16" x 8" HardiPlank HZ10 Siding w/ 1-1/4" lap	1198 sqft.
5/16" x 8" HardiPlank HZ10 Siding w/ 1-1/4" lap (Gable Ends)	247 sqft.
5/4 x 8 Trim (Garage Door Jamb)	28 linear feet
5/4 x 5 Trim (Gable Band Board)	48 linear feet
5/4 x 4 Trim	343 linear feet
1 x 2 Trim	96 linear feet
2 x 6 Rakeboard	74 linear feet
1 x 6 Fascia	102 linear feet
5/16" x 8" HardiPlank HZ10 Siding w/ 1-1/4" lap (for dormers)	354 sqft.
5/4 x 4 Trim (for dormers)	289 linear feet
1 x 2 Trim (for dormers)	59 linear feet
2 x 6 Rakeboard (for dormers)	68 linear feet
1 x 6 Fascia (for dormers)	75 linear feet
Drip Flashing for Window and Door Headers	74 linear feet
Flashing and Back Flashing for Porch (Copper)	14 linear feet
Windows and Doors	
12'-8" Insulated Sectional Garage Door	1 ea.
3068 Exterior Door RH	3 ea.
3068 Exterior Door LH	1 ea.
2668 Interior Door RH	2 ea.
5040 XO Window	4 ea.
4040 XO Window	1 ea.
2026 XO Window	1 ea.
3040 SH Window	6 ea.
3640 SH Window	2 ea.
4040 Steel Window Buck	1 ea.
3068 Steel Door Buck	1 ea.
Drywall	
5/8" Gypsum Wallboard Type "X" (Garage)	757 sqft.
5/8" Gypsum Wallboard (Office)	1439 sqft.
5/8" Gypsum Greenboard Type "M-R" (Bathroom)	239 sqft.
5/8" Gypsum Wallboard (Attic)	1855 sqft.
Fixtures and Appliances	
Kohler Wellworth Elongated Front Toilet	1 ea.
30" Wide Lavatory w/ Drop-in Sink	1 ea.
60" x 30" Bathtub/Shower with Surround	1 ea.
40 Gallon Water Heater	1 ea.
60K BTUH Furnace with A/C and Ducting	1 ea.
Fasteners, Simpson Strong Tie Connectors and Misc.	
SST STD14 Holdown Straps	6 pcs.
SST STD14RJ Holdown Straps	4 pcs.
SST CC66 Column Cap	2 pcs.
SST CB66 Column Base	2 pcs.
SST HU312 (Floor Double Joist Hanger)	2 pcs.
SST HU2.1-11 (Floor Joist Hanger)	1 pcs.
SST MSTC28 (Header Strap)	4 pcs.
SST H10A (1 Ply Truss Holdown)	24 pcs.
SST H10A-2 (2 Ply Truss Holdown)	2 pcs.
SST LGT3N-SDS2.5 (3 Ply Truss Holdown)	12 pcs.
SST H2.5A (Dormer Rafter Holdown)	36 pcs.
SST HU210 (Attic Joist Hanger and Porch Joist Hanger)	96 pcs.
SST HU210-2 (Attic Double Joist Hanger)	2 pcs.
SST HU28 (Roof Framing Hangers)	20 pcs.
SST HU26 (Roof Framing Hangers)	28 pcs.
SST ABU44 (Porch Column Base)	2 pcs.
SST PSCL7/16 (Panel Sheathing Clips, "H" Clips)	200 pcs.
SST LPC4Z (Porch Column Connector)	4 pcs.
SST L50 (Stair Stringer Brackets)	12 pcs.
16d Sinker Nails	50 lbs.
8d Common Nails	50 lbs.
1-1/4" Galvanized Roofing Nails	25 lbs.
7/8" Plasti-top Ring Shank Nails (2000/box)	1 box
1/2" DIA x 6" Stainless Steel Bolts with Hex Nuts and Washers	6 pcs.
Wood Porch Framing	
4 x 4 x 120" Red Cedar No. 2 Post	6 pcs.
2 x 12 x 72" Pressure Treated Stair Stringer	5 pcs.
2 x 10 Pressure Treated Joists and Ledger	50 linear feet
2 x 10 Red Cedar No. 2	12 linear feet
2 x 6 Red Cedar No. 2	120 linear feet
2 x 4 Red Cedar No. 2	50 linear feet
2 x 2 Red Cedar No. 2	117 linear feet



STUDIO/GARAGE PLAN: SHOP4824-A6DB

BUILDING CODE COMPLIANCE:

THIS PLANSET WAS PREPARED TO COMPLY WITH THE REQUIREMENTS OF THE 2012 INTERNATIONAL RESIDENTIAL CODE (IRC). LOCAL BUILDING CODES MAY REQUIRE MODIFICATIONS TO BOTH THE MATERIALS AND DESIGN.

BOM NOTES

1. LOCAL BUILDING CODE APPROVED SUBSTITUTIONS MAY BE MADE TO THIS LIST.
2. VARIATIONS TO CONSTRUCTION METHODS OR DESIGN MAY REQUIRE MODIFICATIONS TO THIS LIST.
3. VERIFICATION OF MATERIAL TYPE AND QUANTITY RECOMMENDED BY SUPPLIER AND CONTRACTOR PRIOR TO FINALIZING AND SHIPPING ORDER.
4. ELECTRICAL COMPONENTS, LANDSCAPING, PLUMBING, INSULATION, PAINT AND INTERIOR FINISHING MATERIALS NOT INCLUDED IN THIS LIST.
5. TO ADVISE CORRECTIONS TO THIS LIST CONTACT: NATHAN@MEDEEK.COM

BUILDING DATA:

GRADE TO RIDGE HEIGHT: 25'-6 1/2"
OFFICE AREA: 511 SQFT
GARAGE AREA: 529 SQFT
ATTIC AREA: 685 SQFT
BASEMENT AREA: 498 SQFT
TOTAL BUILDING AREA: 2229 SQFT

PARAMETERS FOR DESIGN:

WIND SPEED: 100 MPH
WIND EXPOSURE: C
SEISMIC ZONE: A,B,C,D
SNOW LOAD: 50 LBS/SQFT
FLOORS: 40 LBS/SQFT
STAIRS: 100 LBS/SQFT
EARTH PRESSURE: 30 LBS/CF

RESIDENTIAL LIGHT WOOD FRAME CONSTRUCTION



MEDEEK DESIGN
INC.
4035 STATE ST. WARRANDON, WA 98148
PH: 425.811.1310 FAX: 425.811.1311
DESIGN@MEDEEK.COM

PLAN NO. SHOP4824-A6DB
SCALE: 1/8" = 1'-0"

DESIGNED BY: NPW
DATE: 4/26/2012

SHEET CONTENTS:
BUILDING OVERVIEW
BILL OF MATERIALS

REVISION HISTORY:			

CUSTOMER:
LOCATION: