



Wind Load Report

1. Site & Building Data

Roof Type: Gable
 Wind Speed (ult): 138 mph
 Exposure Category: B
 Enclosure Class: Enclosed
 Building Width (W): 50 ft.
 Building Length (L): 73 ft.
 Eave Height (h_e): 10 ft.
 Foundation Height (h_f): 0 ft.
 Roof Pitch: 6 /12
 Eave Overhang (OH_e): 1 ft.
 Gable Overhang (OH_g): 1 ft.

2. Parameters & Coefficients

Topographic Factor (K_{zt}): 1.0
 Directionality Factor (K_d): .85
 Roof Angle (θ): 26.57 deg.
 Mean Roof Height (h): 16.25 ft.
 Ridge Height (h_r): 22.50 ft.
 Pos. Internal Pressure (+GC_{pi}): +0.18
 Neg. Internal Pressure (-GC_{pi}): -0.18
 Velocity Pressure Exp. Coeff. (K_h): 0.70 @ z=h
 Velocity Pressure (q_h): 29.03 psf
 End Zone Width (a): 3.00 ft.
 Zone 2/2E Dist.: 25.00 ft.

3. Design Assumptions and Notes

Code Standard: ASCE 7-10
 Geometry: Regular-Shaped Bldg.
 Height Class: Low-Rise Building
 Notes:

4. Design Loads

Top Chord Dead Load: 7 psf
 Bottom Chord Dead Load: 10 psf
 Truss/Rafter Spacing: 24 in. o/c

4. Design Wind Pressures: MWFRS Envelope Procedure

Load Case A: Transverse Direction			
Surface	GC _{pf}	Design Pressure (psf)	
		(w/ +GC _{pi})	(w/ -GC _{pi})
1	0.55	10.73	21.18
2	-0.10	-8.10	2.35
3	-0.45	-18.21	-7.76
4	-0.39	-16.57	-6.11
1E	0.73	15.90	26.36
2E	-0.19	-10.75	-0.30
3E	-0.58	-22.21	-11.76
4E	-0.53	-20.76	-10.31
2OH	-0.10	-2.88	
2EOH	-0.19	-5.52	
3OH	-0.45	-12.98	
3EOH	-0.58	-16.98	
2OH+W	-0.10/-0.7	-23.20	
2EOH+W	-0.19/-0.7	-25.85	

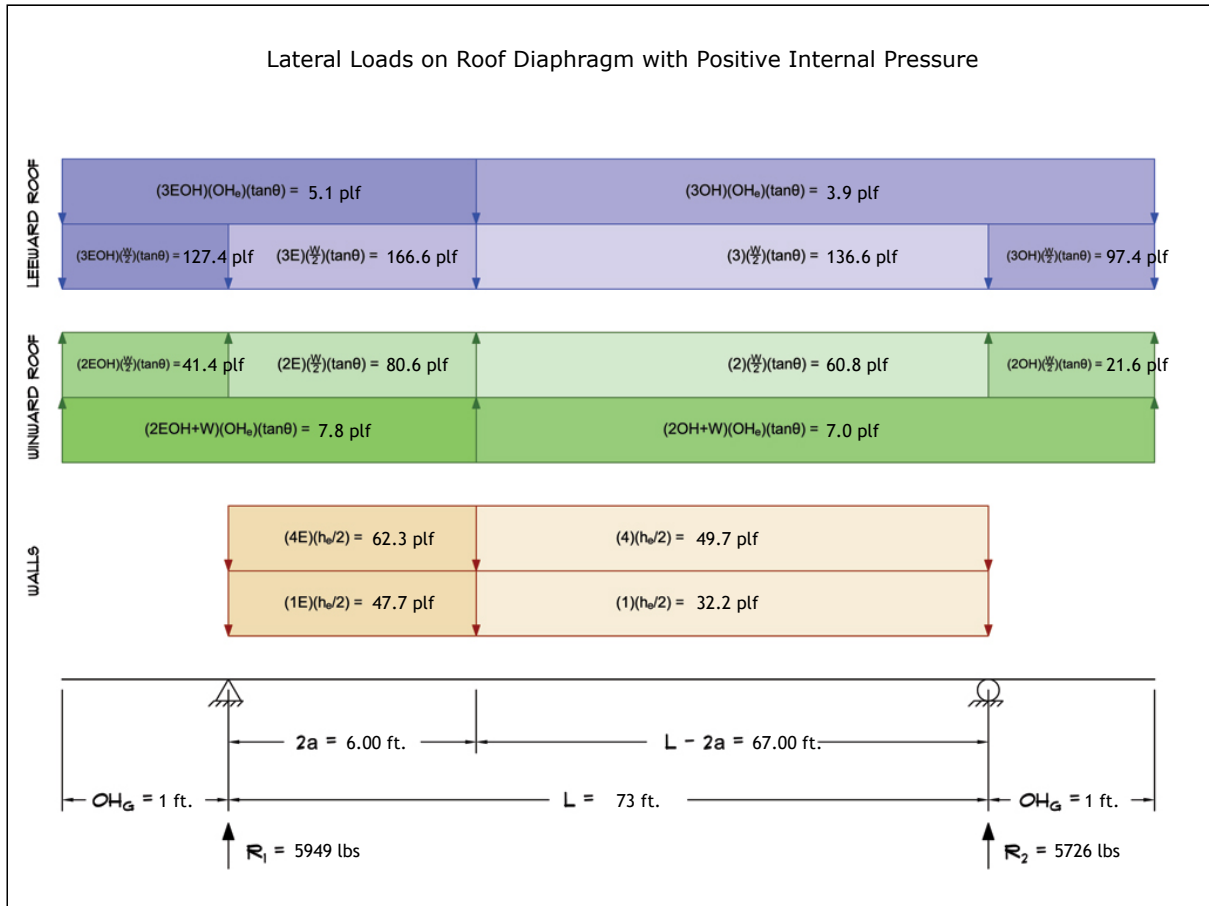


- a) (+) and (-) signs signify wind pressures acting toward & away from surfaces.
- b) External Pressure Coefficients linearly interpolated from Fig. 28.4-1 ASCE 7-10.
- c) Design building for all wind directions, 4 load patterns per load case.
- d) Total horizontal shear shall not be less than that by neglecting roof wind forces.
- e) Min. wind load for enclosed or partially enclosed bldg.: 16 psf wall, 8 psf roof.
- f) Design pressures are for strength design, multiply by 0.6 for ASD.

Subject	Customer	Location	Job No.
Wind Loads			2024D416
Engr.	Company Name		Rev.
Date	123 Street City, State 12345 ph. (888) 777-5555 www.website.com		-
12/10/2024			Page
	<small>This report may not be copied, reproduced or distributed without the written consent of Company Name</small>		1
	Copyright © 2024		

5. Wind Load Calculations

1.) Lateral Loads - Transverse Direction:



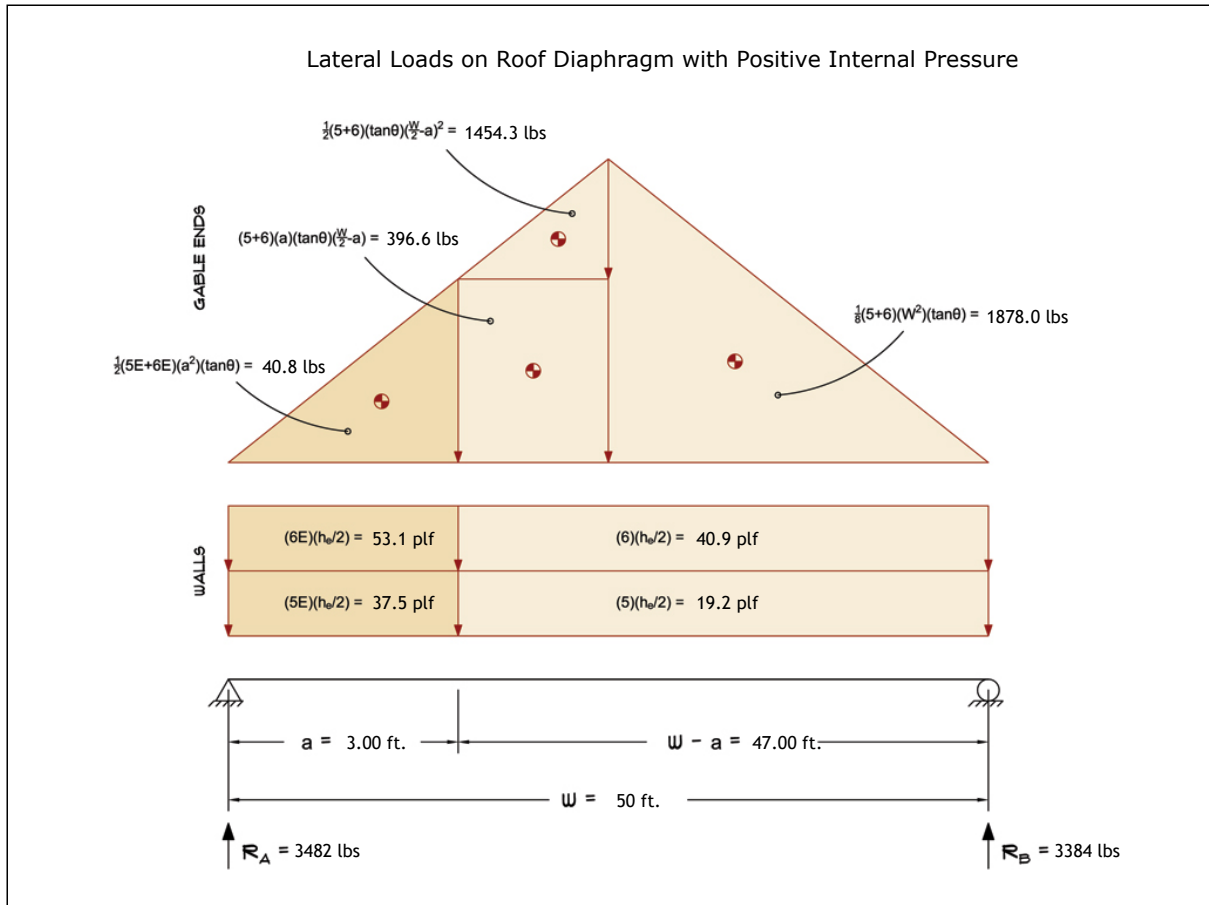
- a) (-) signs signify wind lateral forces acting opposite to the direction of the arrows shown.
- b) Strength design values multiplied by 0.6 to obtain ASD values.

Wind Base Shear (ASD)						
Load Case A: Transverse Direction						
Load Case	Walls (lbs)	Roof (lbs)	Roof Overhangs (lbs)	Total Lateral Load (lbs)	R ₁ (lbs)	R ₂ (lbs)
Positive Internal Pressure	6147	5593	-65	11675	5949	5726
Negative Internal Pressure	6147	5593	-65	11675	5949	5726
Roof Pressure = 0	6147	0	0	6147	3151	2996
Min. Pressures (8 psf, 16 psf)	3504	4380	300	8184	4092	4092

- a) Bottom half of wall neglected in tributary area calculations.
- b) Strength design values multiplied by 0.6 to obtain ASD values.

Subject Wind Loads	Customer	Location	Job No. 2024D416
Engr. Engineer	Company Name 123 Street City, State 12345 ph. (888) 777-5555 www.website.com		Rev. -
Date 12/10/2024			
This report may not be copied, reproduced or distributed without the written consent of Company Name Copyright © 2024			

2.) Lateral Loads - Longitudinal Direction:



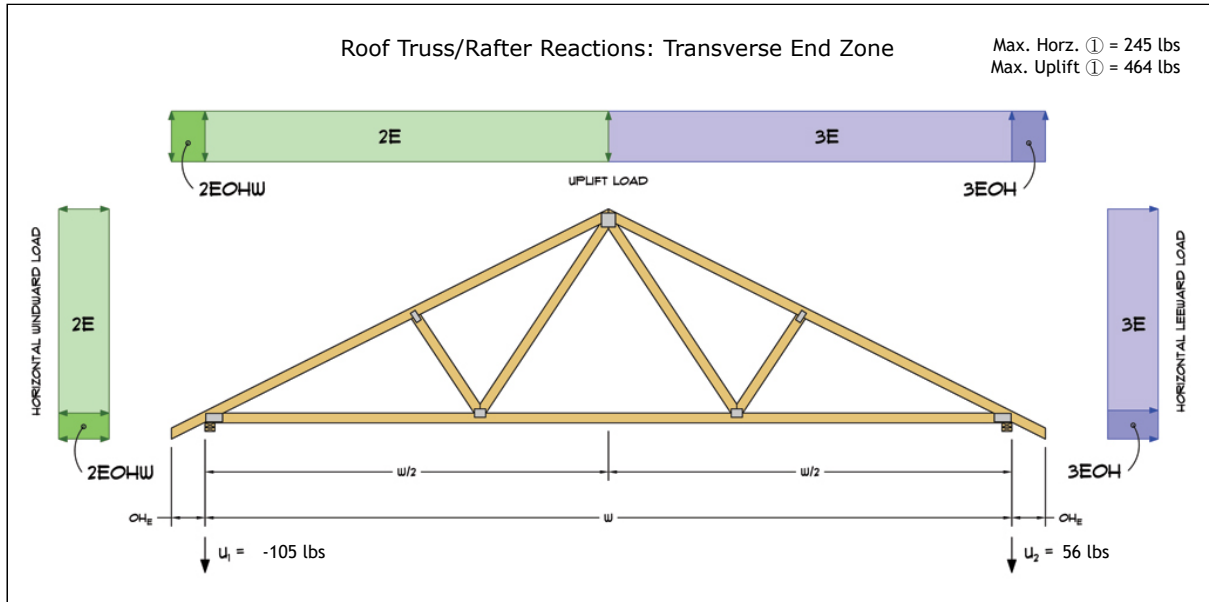
- a) (-) signs signify wind lateral forces acting opposite to the direction of the arrows shown.
- b) Strength design values multiplied by 0.6 to obtain ASD values.
- c) Where the length of building (L) exceeds 4X the mean roof height (h), wind drag forces should additionally be considered.

Wind Base Shear (ASD)						
Load Case B: Longitudinal Direction						
Load Case	Walls (lbs)	Gable Ends (lbs)	Roof (lbs)	Total Lateral Load (lbs)	R _A (lbs)	R _B (lbs)
Positive Internal Pressure	3096	3770	0	6866	3482	3384
Negative Internal Pressure	3096	3770	0	6866	3482	3384
Roof Pressure = 0	3096	3770	0	6866	3482	3384
Min. Pressures (8 psf, 16 psf)	2400	3000	0	5400	2700	2700

- a) Bottom half of wall neglected in tributary area calculations.
- b) Strength design values multiplied by 0.6 to obtain ASD values.

Subject	Wind Loads	Customer	Location	Job No.	2024D416	
Engr.	Engineer	Company Name 123 Street City, State 12345 ph. (888) 777-5555 www.website.com			Rev.	-
Date	12/10/2024					Page
This report may not be copied, reproduced or distributed without the written consent of Company Name Copyright © 2024						

3.) Roof Truss Reactions:



- a) Strength design values multiplied by 0.6 to obtain ASD values.
- b) Windward loads may be positive or negative depending on pitch of roof.

Roof Truss/Rafter Reactions (ASD)					
w/ Positive Internal Pressure					
Load Case	Horizontal Load (lbs)	Gross Uplift (lbs)	Net Uplift (lbs)	U ₁ (lbs)	U ₂ (lbs)
Transverse Int. Zone	-145	833	-256	-197	-58
Transverse End Zone	-167	1040	-48	-105	56
Longitudinal Int. Zone	145	1274	185	168	17
Longitudinal End Zone	245	1763	674	464	210

- a) Gross Uplift calculations do not include any counteracting roof dead loads.
- b) Net Uplift calculations include counteracting roof dead loads multiplied by 0.6 per load case (7) ASCE 7-10.
- c) Strength design values multiplied by 0.6 to obtain ASD values for wind loads.
- d) Loads based on truss spacing calculated at 24" o/c.
- e) Negative values for horizontal load indicate load acting in windward direction (transverse load cases).
- f) Negative values for uplift indicate net downward force (zero uplift).

*Disclaimer: The calculations produced herein are for initial design and estimating purposes only. The calculations and drawings presented do not constitute a fully engineered design. All of the potential load cases required to fully design an actual structure may not be provided by this calculator. For the design of an actual structure, a registered and licensed professional should be consulted as per IRC 2012 Sec. R802.10.2 and designed according to the minimum requirements of ASCE 7-10. The wind load calculations provided by this online tool are for educational and illustrative purposes only. Medeek Design assumes no liability or loss for any designs presented and does not guarantee fitness for use.

Subject	Customer	Location	Job No.
Wind Loads			2024D416
Engr.	Company Name 123 Street City, State 12345 ph. (888) 777-5555 www.website.com		Rev.
Date			12/10/2024
			This report may not be copied, reproduced or distributed without the written consent of Company Name
			Page
			5
Copyright © 2024			