



Wind Load Report

1. Site & Building Data

Roof Type:	Gable
Wind Speed (ult):	115 mph
Exposure Category:	C
Enclosure Class:	Enclosed
Building Width (W):	68 ft.
Building Length (L):	120 ft.
Eave Height (h _e):	20 ft.
Foundation Height (h _f):	0 ft.
Roof Pitch:	4 /12
Eave Overhang (OH _e):	2 ft.
Gable Overhang (OH _g):	2 ft.

2. Parameters & Coefficients

Topographic Factor (K _{zt}):	1.0
Directionality Factor (K _d):	.85
Roof Angle (θ):	18.43 deg.
Mean Roof Height (h):	25.67 ft.
Ridge Height (h _r):	31.33 ft.
Pos. Internal Pressure (+GC _{pi}):	+0.18
Neg. Internal Pressure (-GC _{pi}):	-0.18
Velocity Pressure Exp. Coeff. (K _h):	0.95 @ z=h
Velocity Pressure (q _h):	27.35 psf
End Zone Width (a):	3.00 ft.
Zone 2/2E Dist.:	34.00 ft.

3. Design Assumptions and Notes

Code Standard: ASCE 7-10
 Geometry: Regular-Shaped Bldg.
 Height Class: Low-Rise Building
 Notes:

4. Design Loads

Top Chord Dead Load: 7 psf
 Bottom Chord Dead Load: 10 psf
 Truss/Rafter Spacing: 24 in. o/c

4. Design Wind Pressures: MWFRS Envelope Procedure

Load Case A: Transverse Direction			
Surface	GC _{pf}	Design Pressure (psf)	
		(w/ +GC _{pi})	(w/ -GC _{pi})
1	0.52	9.20	19.05
2	-0.69	-23.80	-13.95
3	-0.47	-17.74	-7.89
4	-0.42	-16.29	-6.44
1E	0.78	16.42	26.26
2E	-1.07	-34.19	-24.34
3E	-0.67	-23.34	-13.49
4E	-0.62	-21.83	-11.98
2OH	-0.69	-18.87	
2EOH	-1.07	-29.27	
3OH	-0.47	-12.82	
3EOH	-0.67	-18.42	
2OH+W	-0.69/-0.7	-37.04	
2EOH+W	-1.07/-0.7	-47.44	



- a) (+) and (-) signs signify wind pressures acting toward & away from surfaces.
- b) External Pressure Coefficients linearly interpolated from Fig. 28.4-1 ASCE 7-10.
- c) Design building for all wind directions, 4 load patterns per load case.
- d) Total horizontal shear shall not be less than that by neglecting roof wind forces.
- e) Min. wind load for enclosed or partially enclosed bldg.: 16 psf wall, 8 psf roof.
- f) Design pressures are for strength design, multiply by 0.6 for ASD.

Subject Wind Loads	Customer	Location	Job No. 2024D351
Engr. Engineer Name	ENGINEERING COMPANY INC.		Rev. -
Date 10/6/2024	Street Address City, CA 99999 ph. (800) 000-0000 www.website.com		Page 1



This report may not be copied, reproduced or distributed without the written consent of Engineering Company Inc.

Load Case B: Longitudinal Direction

Surface	GCpf	Design Pressure (psf)	
		(w/ +GCpi)	(w/ -GCpi)
1	-0.45	-17.23	-7.39
2	-0.69	-23.80	-13.95
3	-0.37	-15.04	-5.20
4	-0.45	-17.23	-7.39
5	0.40	6.02	15.87
6	-0.29	-12.86	-3.01
1E	-0.48	-18.05	-8.21
2E	-1.07	-34.19	-24.34
3E	-0.53	-19.42	-9.57
4E	-0.48	-18.05	-8.21
5E	0.61	11.76	21.61
6E	-0.43	-16.69	-6.84
2OH	-0.69	-18.87	
2EOH	-1.07	-29.27	
3OH	-0.37	-10.12	
3EOH	-0.53	-14.50	
2EOH+W	-1.07/-0.7	-48.42	
3EOH+W	-0.53/-0.7	-33.64	



- a) (+) and (-) signs signify wind pressures acting toward & away from surfaces.
- b) External Pressure Coefficients linearly interpolated from Fig. 28.4-1 ASCE 7-10.
- c) Design building for all wind directions, 4 load patterns per load case.
- d) Total horizontal shear shall not be less than that by neglecting roof wind forces.
- e) Min. wind load for enclosed or partially enclosed bldg.: 16 psf wall, 8 psf roof.
- f) Design pressures are for strength design, multiply by 0.6 for ASD.

Torsional Load Cases

Surface	Load Case	GCpf	Design Pressure (psf)	
			(w/ +GCpi)	(w/ -GCpi)
1T	A	-	2.30	4.76
2T	A	-	-5.95	-3.49
3T	A	-	-4.43	-1.97
4T	A	-	-4.07	-1.61
5T	B	-	1.50	3.97
6T	B	-	-3.21	-0.75



- a) (+) and (-) signs signify wind pressures acting toward & away from surfaces.
- b) Pressures designated with a "T" are 25% of full design wind pressures.
- c) Torsional loading shall apply to all 8 load patterns using the figures shown.
- d) Design pressures are for strength design, multiply by 0.6 for ASD.
- e) Torsional Design Exceptions: One story bldg. with $h \leq 30$ ft.
Two stories or less framed with light frame construction,
Two stories or less with flexible diaphragms.

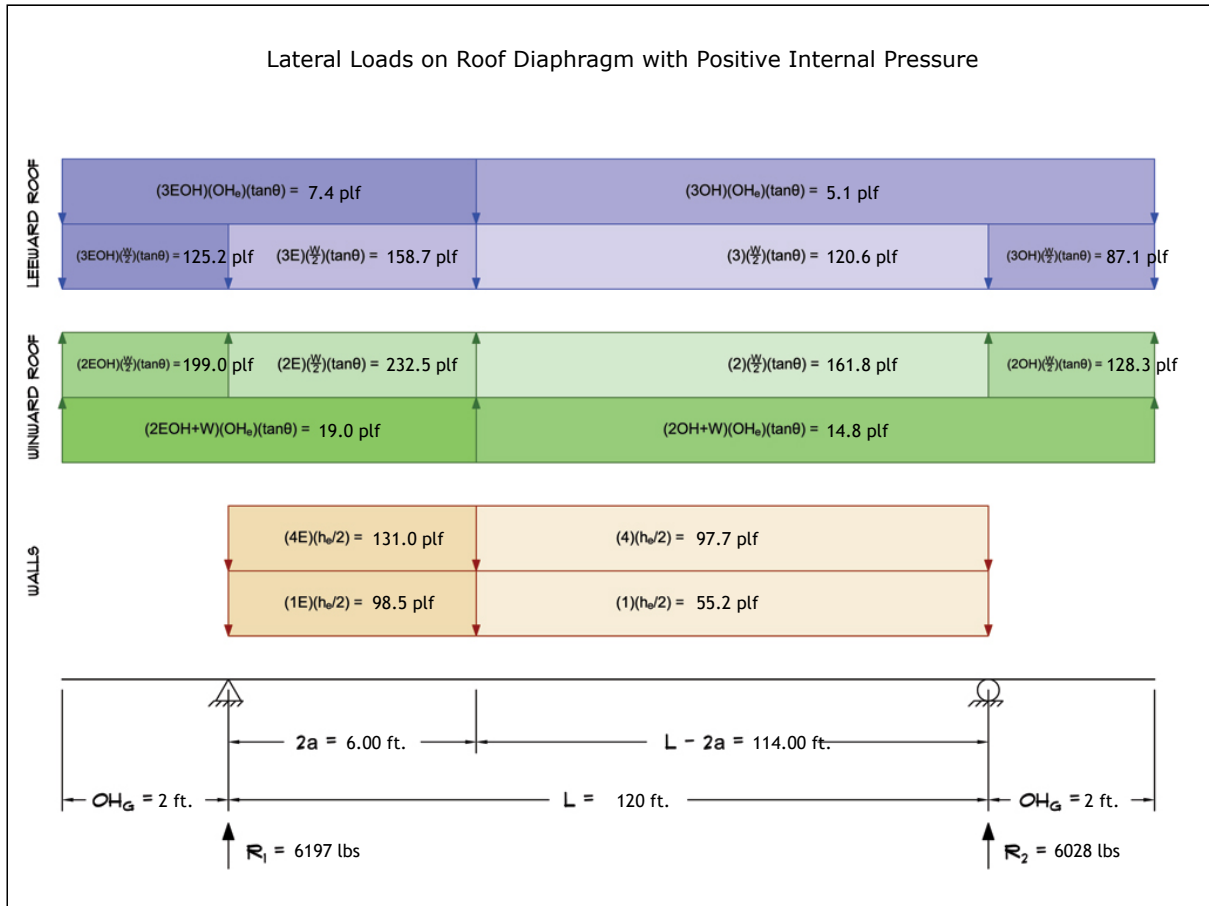
Subject Wind Loads	Customer	Location	Job No. 2024D351
Engr. Engineer Name	ENGINEERING COMPANY INC.		Rev. -
Date 10/6/2024	Street Address City, CA 99999 ph. (800) 000-0000 www.website.com		Page 2



This report may not be copied, reproduced or distributed without the written consent of Engineering Company Inc.

5. Wind Load Calculations

1.) Lateral Loads - Transverse Direction:



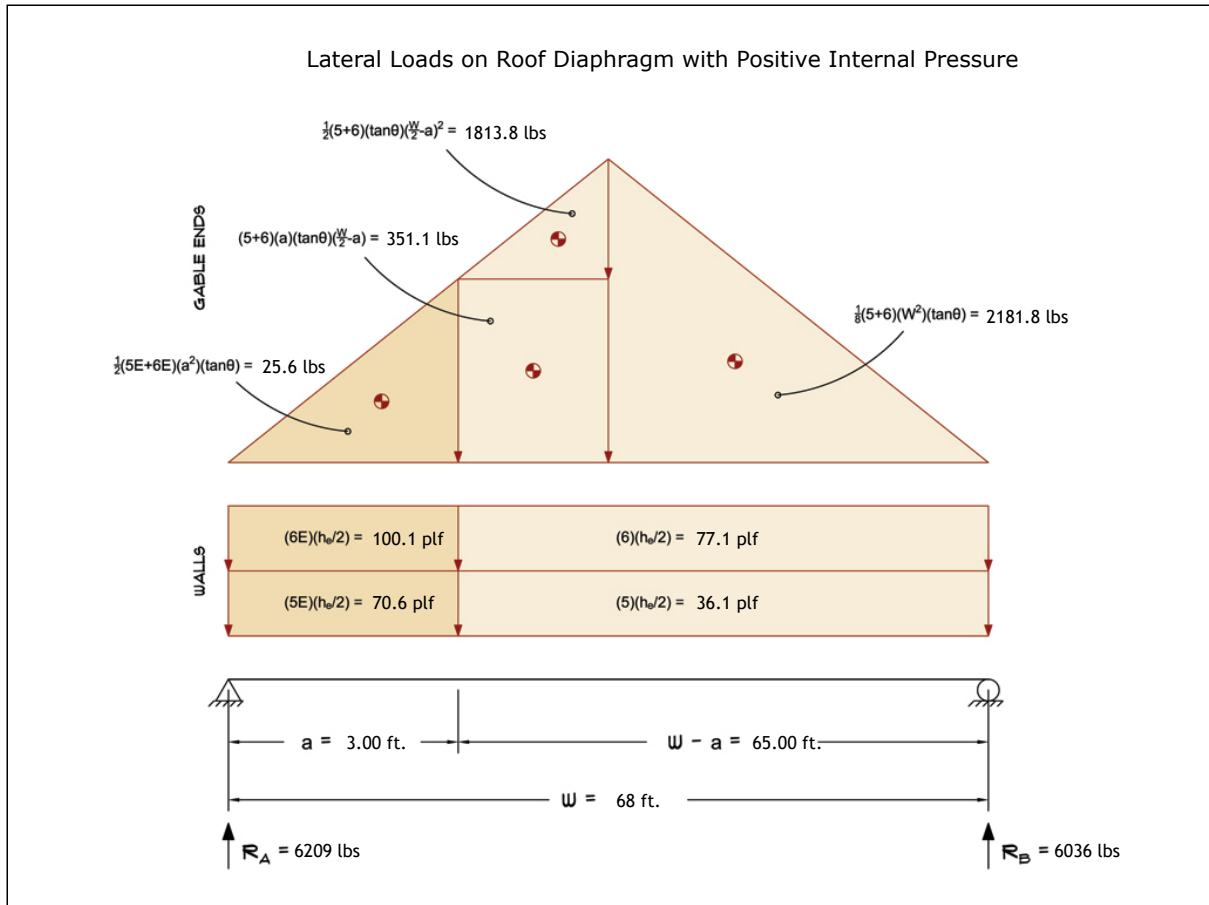
- a) (-) signs signify wind lateral forces acting opposite to the direction of the arrows shown.
- b) Strength design values multiplied by 0.6 to obtain ASD values.

Wind Base Shear (ASD)						
Load Case A: Transverse Direction						
Load Case	Walls (lbs)	Roof (lbs)	Roof Overhangs (lbs)	Total Lateral Load (lbs)	R ₁ (lbs)	R ₂ (lbs)
Positive Internal Pressure	18811	-5139	-1447	12225	6197	6028
Negative Internal Pressure	18811	-5139	-1447	12225	6197	6028
Roof Pressure = 0	18811	0	0	18811	9624	9187
Min. Pressures (8 psf, 16 psf)	11520	6528	614	18662	9331	9331

- a) Bottom half of wall neglected in tributary area calculations.
- b) Strength design values multiplied by 0.6 to obtain ASD values.

Subject	Customer	Location	Job No.
Wind Loads			2024D351
Engr.	ENGINEERING COMPANY INC.		Rev.
	Street Address City, CA 99999		-
Date	ph. (800) 000-0000 www.website.com		Page
10/6/2024			3
Copyright © 2024			

2.) Lateral Loads - Longitudinal Direction:



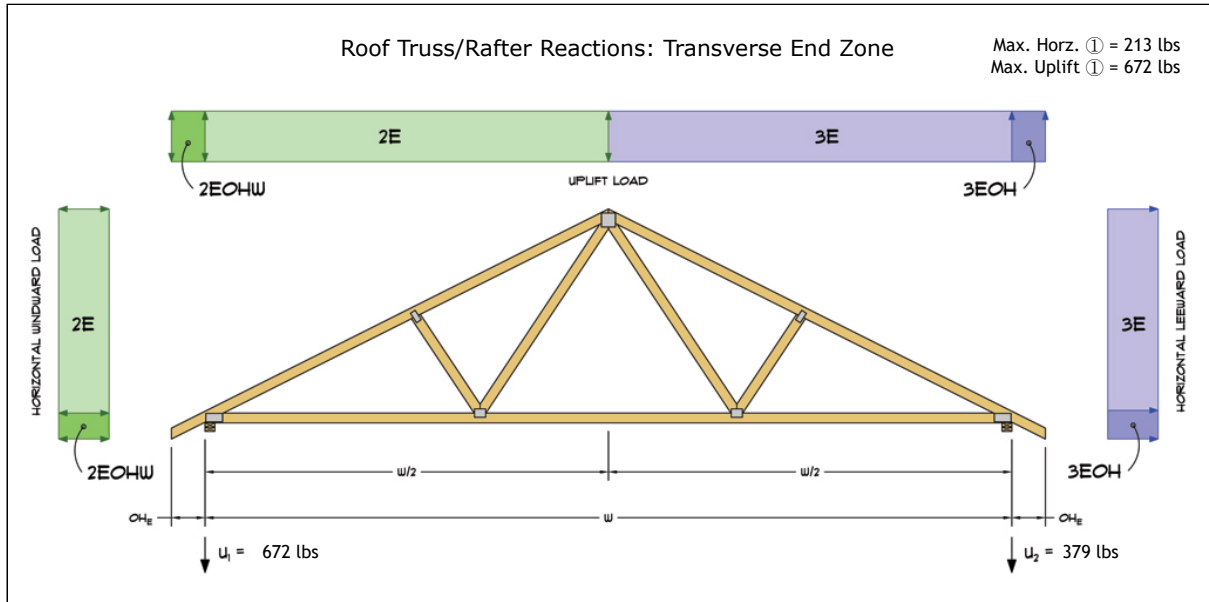
- a) (-) signs signify wind lateral forces acting opposite to the direction of the arrows shown.
- b) Strength design values multiplied by 0.6 to obtain ASD values.
- c) Where the length of building (L) exceeds 4X the mean roof height (h), wind drag forces should additionally be considered.

Wind Base Shear (ASD)						
Load Case B: Longitudinal Direction						
Load Case	Walls (lbs)	Gable Ends (lbs)	Roof (lbs)	Total Lateral Load (lbs)	R _A (lbs)	R _B (lbs)
Positive Internal Pressure	7873	4372	0	12245	6209	6036
Negative Internal Pressure	7873	4372	0	12245	6209	6036
Roof Pressure = 0	7873	4372	0	12245	6209	6036
Min. Pressures (8 psf, 16 psf)	6528	3699	0	10227	5114	5114

- a) Bottom half of wall neglected in tributary area calculations.
- b) Strength design values multiplied by 0.6 to obtain ASD values.

Subject Wind Loads	Customer	Location	Job No. 2024D351
Engr. Engineer Name	ENGINEERING COMPANY INC. Street Address City, CA 99999 ph. (800) 000-0000 www.website.com		Rev. -
Date 10/6/2024			This report may not be copied, reproduced or distributed without the written consent of Engineering Company Inc. Copyright © 2024

3.) Roof Truss Reactions:



- a) Strength design values multiplied by 0.6 to obtain ASD values.
- b) Windward loads may be positive or negative depending on pitch of roof.

Roof Truss/Rafter Reactions (ASD)					
w/ Positive Internal Pressure					
Load Case	Horizontal Load (lbs)	Gross Uplift (lbs)	Net Uplift (lbs)	U ₁ (lbs)	U ₂ (lbs)
Transverse Int. Zone	102	1814	361	272	89
Transverse End Zone	171	2505	1052	672	379
Longitudinal Int. Zone	126	1654	201	201	0
Longitudinal End Zone	213	2292	839	588	251

- a) Gross Uplift calculations do not include any counteracting roof dead loads.
- b) Net Uplift calculations include counteracting roof dead loads multiplied by 0.6 per load case (7) ASCE 7-10.
- c) Strength design values multiplied by 0.6 to obtain ASD values for wind loads.
- d) Loads based on truss spacing calculated at 24" o/c.
- e) Negative values for horizontal load indicate load acting in windward direction (transverse load cases).
- f) Negative values for uplift indicate net downward force (zero uplift).

*Disclaimer: The calculations produced herein are for initial design and estimating purposes only. The calculations and drawings presented do not constitute a fully engineered design. All of the potential load cases required to fully design an actual structure may not be provided by this calculator. For the design of an actual structure, a registered and licensed professional should be consulted as per IRC 2012 Sec. R802.10.2 and designed according to the minimum requirements of ASCE 7-10. The wind load calculations provided by this online tool are for educational and illustrative purposes only. Medeek Design assumes no liability or loss for any designs presented and does not guarantee fitness for use.

Subject Wind Loads	Customer	Location	Job No. 2024D351
Engr. Engineer Name	ENGINEERING COMPANY INC. Street Address City, CA 99999 ph. (800) 000-0000 www.website.com		Rev. -
Date 10/6/2024			
This report may not be copied, reproduced or distributed without the written consent of Engineering Company Inc. Copyright © 2024			