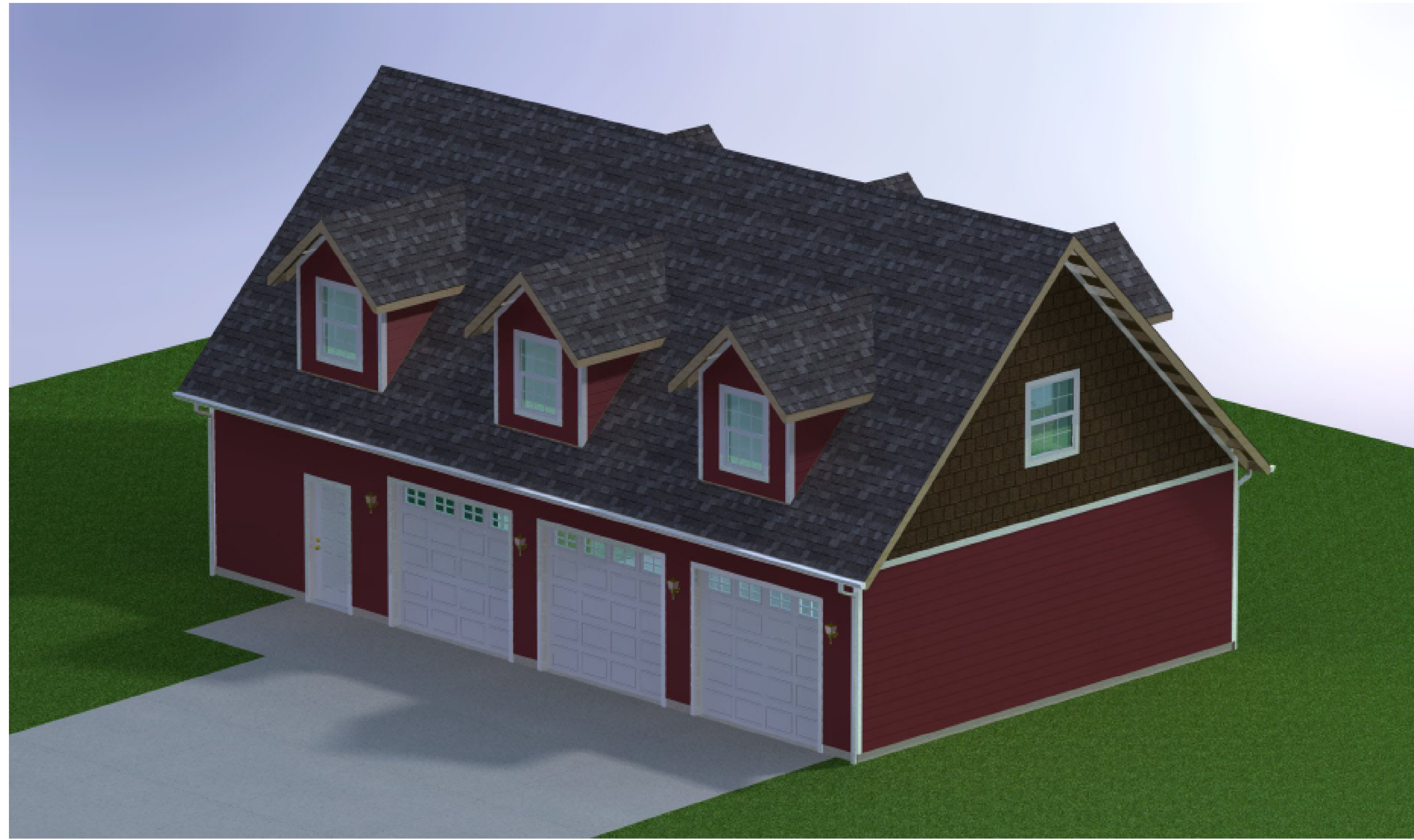


Bill of Materials for Plan: GARAGE4828-A6D-3	
Description	Quantity
Concrete and Rebar	
Concrete (min. comp. strength 3000 PSI)	34.8 cubic yards (min.)
#4 Rebar ASTM A-615 grade 60	1108 linear feet
1/2" DIA x 10" Anchor Bolts with Hex Nuts	22 pcs.
5/8" DIA x 14" Anchor Bolts with Hex Nuts	5 pcs.
SST SSB28 7/8" DIA x 28" Anchor Bolts with Hex Nuts	2 pcs.
2" x 2" x 3/16" Square Washers (1/2" AB)	22 pcs.
3" x 3" x 1/4" Square Washers (5/8" AB)	5 pcs.
Framing	
2 x 6 x 120" HF/DF Exterior Front Garage Wall (Studs)	63 pcs.
2 x 6 x 120" HF/DF Exterior Rear Garage Wall (Studs)	56 pcs.
2 x 6 x 120" HF/DF Exterior Left Garage Wall (Studs)	24 pcs.
2 x 6 x 120" HF/DF Exterior Right Garage Wall (Studs)	22 pcs.
2 x 6 x 92-1/2" HF/DF Gable Wall (Studs)	32 pcs.
2 x 6 x 92-1/2" HF/DF Dormer Wall (Studs)	66 pcs.
2 x 6 x 144" HF/DF Interior Stair Wall (Studs)	2 pcs.
2 x 4 x 120" HF/DF Interior Braced Wall (Studs)	12 pcs.
2 x 4 x 144" HF/DF Interior Stair Wall (Studs)	22 pcs.
2 x 4 HF/DF No. 2 Pressure Treated Bottom Plate	33 linear feet
2 x 6 HF/DF No. 2 Pressure Treated Bottom Plate	121 linear feet
2 x 10 HF/DF No. 2 Ladder Blocking (Attic Floor)	265 linear feet
2 x 6 HF/DF No. 2 Gable Roof Lookouts	157 linear feet
2 x 6 HF/DF No. 2 Plates, Framing and Blocking	1370 linear feet
2 x 4 HF/DF No. 2 Plates, Framing and Blocking	469 linear feet
2 x 12 DF No. 1 Header	43 linear feet
2 x 10 DF No. 1 Header	23 linear feet
2 x 6 DF No. 1 Header	13 linear feet
2 x 4 DF No. 1 Header	59 linear feet
5-1/4" x 11-1/4" LVL Header 2.0E (3 PLY 1-3/4")	36 linear feet
2 x 6 x 22-1/2" Roof Eave Blocking w/ screened vent holes	44 pcs.
2 x 4 x 22-1/2" Dormer Eave Blocking w/ screened vent holes	36 pcs.
Truss Package (see sheet 9 for details)	
12/12 Attic Truss (1 PLY)	10 ea.
12/12 Attic Girder Truss (2 PLY)	1 ea.
12/12 Attic Girder Truss (3 PLY)	6 ea.
12/12 Attic Gable Truss (1 PLY)	2 ea.
12/12 Piggyback Truss (1 PLY)	17 ea.
12/12 Piggyback Gable Truss (1 PLY)	2 ea.
Flooring and Sheathing	
3/4" T&G Advantech Flooring (4x8 sheet) - Attic Floor	833 sqft. - 26 sheets
7/16" OSB Wall Sheathing - Main Floor (4x8 sheet)	1440 sqft. - 45 sheets
7/16" OSB Wall Sheathing - Gable & Dormers (4x8 sheet)	765 sqft. - 24 sheets
7/16" OSB or 15/32" 5 Ply CD Ext. Roof Sheathing (4x8 sheet)	2378 sqft. - 75 sheets
Stairs	
2 x 12 HF/DF No. 2 Stair Stringer (16' length)	4 pcs.
1-3/4" x 11 7/8" LVL Stair String (16' length) [ALTERNATE]	3 pcs.
1" x 11-1/4" x 42" Stair Tread	15 pcs.
3/4" x 8" x 42" Stair Riser	15 pcs.
1" x 11-1/4" x 44" Stair Tread (landing step)	1 pcs.
3/4" x 8" x 44" Stair Riser (landing step)	1 pcs.
3-1/2" x 42" Landing Tread	1 pcs.
5-1/2" x 44" Landing Tread	1 pcs.
3/4" x 11-1/4" Skirt Board	38 linear feet
Handrail 1-1/2" DIA (16' length)	1 pc.
Handrail Support Brackets	2 pcs.
3-1/4" x 3-1/4" x 54" Newel Post	1 pc.
1-3/4" x 1-3/4" x 41" Baluster	18 pcs.
Balustrade Handrail (9' length)	1 pc.
Balustrade Shoerail (9' length)	1 pc.
Vapor Barriers	
15# Asphalt Saturated Felt (36" Wide Roll, 432 sqft/roll), walls	2025 sqft.
30# Asphalt Saturated Felt (36" Wide Roll, 216 sqft/roll), roof	2378 sqft.
.006" Black Polyethylene Vapor Barrier	1344 sqft.
Concrete Water Proof Asphalt Coating (below grade)	10 gal.
Roofing	
Architectural Asphalt Shingles (30 year)	1810 sqft.
Architectural Asphalt Shingles (30 year) (for dormers)	568 sqft.
13-1/4" Hip and Ridge	113 linear feet
11-1/4" Ridge Vent	51 linear feet
1-1/4" x 2-3/4" Hemmed Drip Edge 28 Gauge	335 linear feet

Description	Quantity
Siding	
5/16" x 8" HardiPlank Lap Siding w/ 1-1/4" lap	1187 sqft.
1/4" x 15.25" Hardishingle Siding w/ 7" Exp. (Gable Ends)	346 sqft.
5/4 x 5 Trim (Gable Band Board)	56 linear feet
5/4 x 4 Trim	330 linear feet
1 x 2 Trim	96 linear feet
2 x 6 Rakeboard	84 linear feet
1 x 6 Fascia	102 linear feet
5/16" x 8" HardiPlank Lap Siding w/ 1-1/4" lap (for dormers)	310 sqft.
5/4 x 4 Trim (for dormers)	280 linear feet
1 x 2 Trim (for dormers)	63 linear feet
2 x 6 Rakeboard (for dormers)	66 linear feet
1 x 6 Fascia (for dormers)	82 linear feet
Drip Flashing for Window and Door Headers	52 linear feet
Windows and Doors	
9'-8" Insulated Sectional Garage Door	3 ea.
3068 Exterior Door RH	1 ea.
3068 Exterior Door LH	1 ea.
2468 Interior Door LH	2 ea.
5040 XO Window	2 ea.
3040 SH Window	6 ea.
3640 SH Window	2 ea.
Drywall	
5/8" Gypsum Wallboard Type "X" (Garage and Stairwell)	1735 sqft.
5/8" Gypsum Wallboard (Attic)	2125 sqft.
Fixtures and Appliances (ALT. ATTIC APARTMENT)	
Kohler Wellworth Elongated Front Toilet	1 ea.
30" Wide Lavatory w/ Drop-in Sink	1 ea.
60" x 42" Whirlpool Bathtub with Surround	1 ea.
30" Range/Oven with Vented Hood	1 ea.
33" Double Kitchen Sink	1 ea.
24" Under Counter Refrigerator	1 ea.
40-60 Gallon Water Heater	1 ea.
60K BTUH Furnace with A/C and Ducting or Equiv.	1 ea.
Fasteners, Simpson Strong Tie Connectors and Misc.	
SST STHD14 Holdown Straps	14 pcs.
SST MSTC28 (Header Strap)	2 pcs.
SST MSTC40 (Header Strap)	6 pcs.
SST H10A (1 Ply Truss Holdown)	24 pcs.
SST H10A-2 (2 Ply Truss Holdown)	2 pcs.
SST LGT3N-SDS2.5 (3 Ply Truss Holdown)	12 pcs.
SST H2.5A (Dormer Rafter and Lookout Holdown)	72 pcs.
SST HU210 (Attic Joist Hanger)	93 pcs.
SST HU210-2 (Attic Double Joist Hanger)	2 pcs.
SST HU28 (Roof Framing Hangers)	20 pcs.
SST HU26 (Roof Framing Hangers)	30 pcs.
SST PSCL7/16 (Panel Sheathing Clips, "H" Clips)	200 pcs.
SST LS0 (Stair Stringer Brackets)	6 pcs.
SST HDQ8 (Holdown)	2 pcs.
16d Sinker Nails	50 lbs.
8d Common Nails	50 lbs.
#6 x 1-5/8" Coarse Drywall Screws	25 lbs.
1-1/4" Galvanized Roofing Nails	25 lbs.
7/8" Plasti-top Ring Shank Nails (2000/box)	1 box



GARAGE PLAN: GARAGE4828-A6D-3

BUILDING CODE COMPLIANCE:

THIS PLANSET WAS PREPARED TO COMPLY WITH THE REQUIREMENTS OF THE 2012 INTERNATIONAL RESIDENTIAL CODE (IRC). LOCAL BUILDING CODES MAY REQUIRE MODIFICATIONS TO BOTH THE MATERIALS AND DESIGN.

BOM NOTES

1. LOCAL BUILDING CODE APPROVED SUBSTITUTIONS MAY BE MADE TO THIS LIST.
2. VARIATIONS TO CONSTRUCTION METHODS OR DESIGN MAY REQUIRE MODIFICATIONS TO THIS LIST.
3. VERIFICATION OF MATERIAL TYPE AND QUANTITY RECOMMENDED BY SUPPLIER AND CONTRACTOR PRIOR TO FINALIZING AND SHIPPING ORDER.
4. ELECTRICAL COMPONENTS, LANDSCAPING, PLUMBING, INSULATION, PAINT AND INTERIOR FINISHING MATERIALS NOT INCLUDED IN THIS MATERIALS LIST.
5. TO ADVISE CORRECTIONS TO THIS LIST CONTACT: NATHAN@MEDEEK.COM

BUILDING DATA:

LENGTH: 48 FT.
 WIDTH: 28 FT.
 GRADE TO RIDGE HEIGHT: 25'-3 1/2"
 GARAGE AREA: 1244 SQFT
 ATTIC AREA: 868 SQFT
 TOTAL BUILDING AREA: 2104 SQFT

PARAMETERS FOR DESIGN:

WIND SPEED: 100 MPH
 WIND EXPOSURE: C
 SEISMIC ZONE: A,B,C,D
 SNOW LOAD: 90 LBS/SQFT
 FLOORS: 40 LBS/SQFT
 STAIRS: 100 LBS/SQFT
 EARTH PRESSURE: 30 LBS/CF
 SOIL BEARING CAP.: 1500 LBS/SQFT

RESIDENTIAL LIGHT WOOD FRAME CONSTRUCTION



MEDEEK DESIGN
 10000 W. 100th Ave. Suite 100
 Denver, CO 80231
 PHONE: 303.755.1000
 DISCO@MEDEEK.COM

PLAN NO. GARAGE4828-A6D-3
 SCALE: 1/8" = 1'-0"

DESIGNED BY: NPW
 DATE: 1/23/2013

SHEET CONTENTS:
 BUILDING OVERVIEW
 BILL OF MATERIALS

REVISION HISTORY:				

CUSTOMER:
 LOCATION: