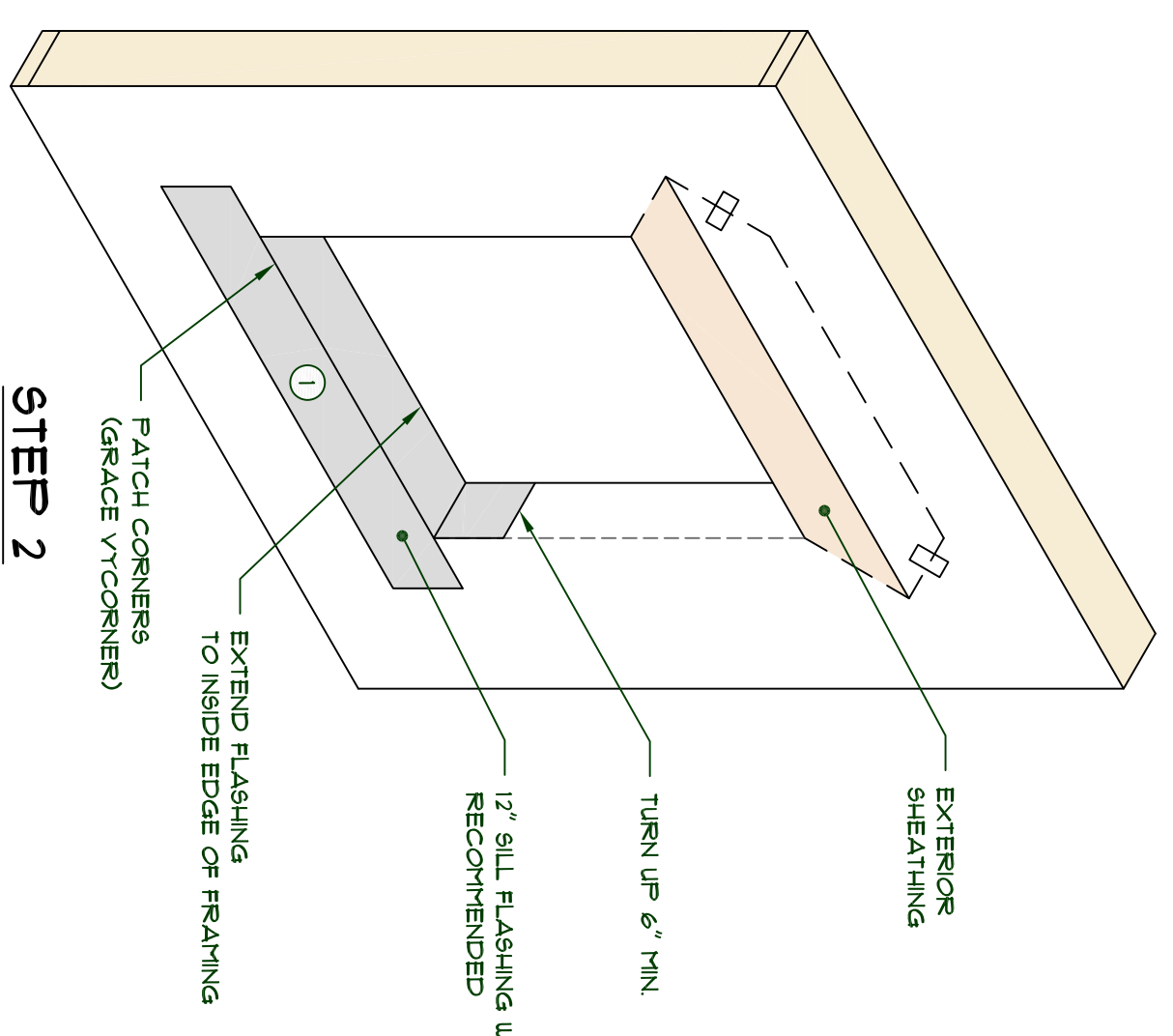
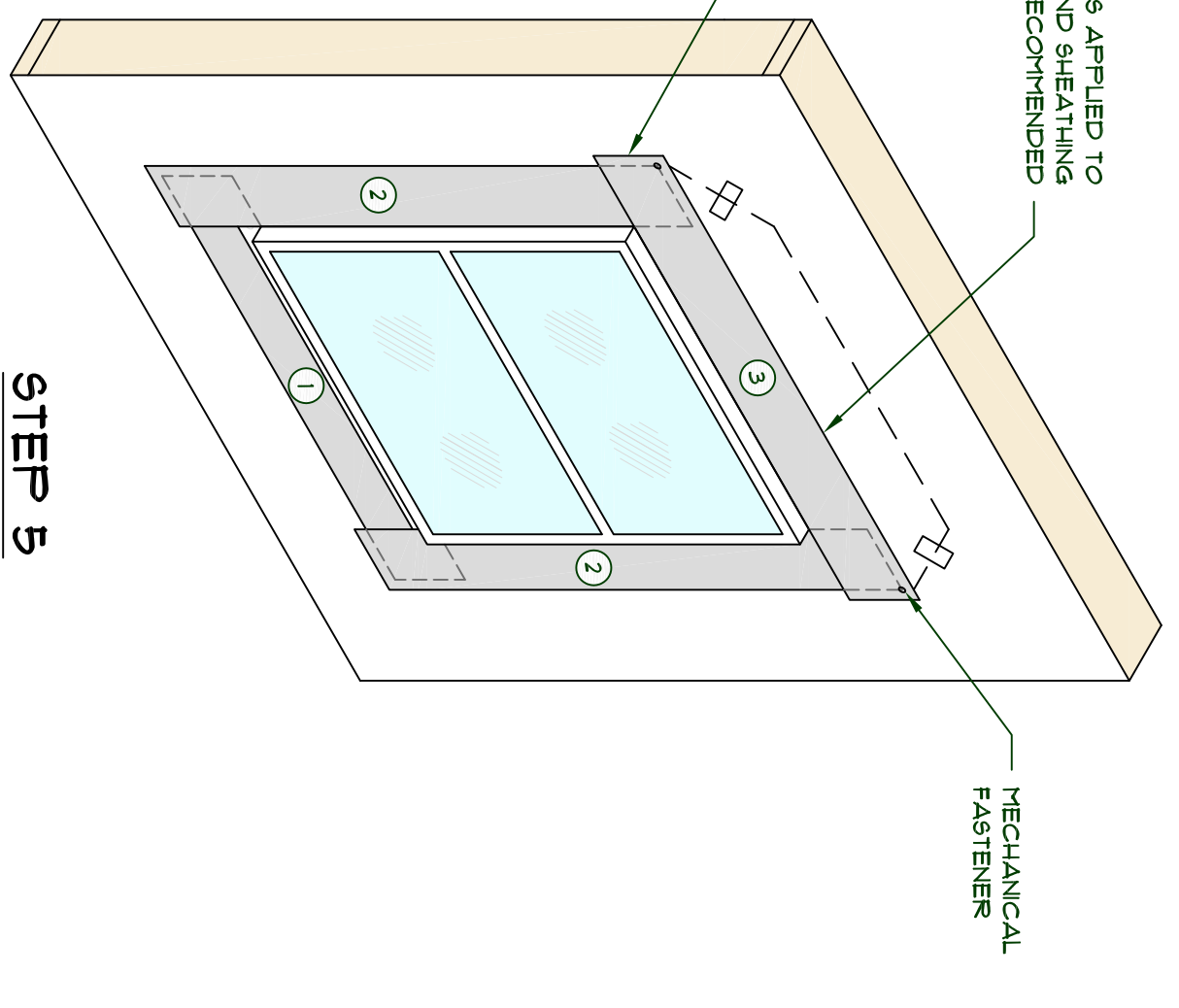


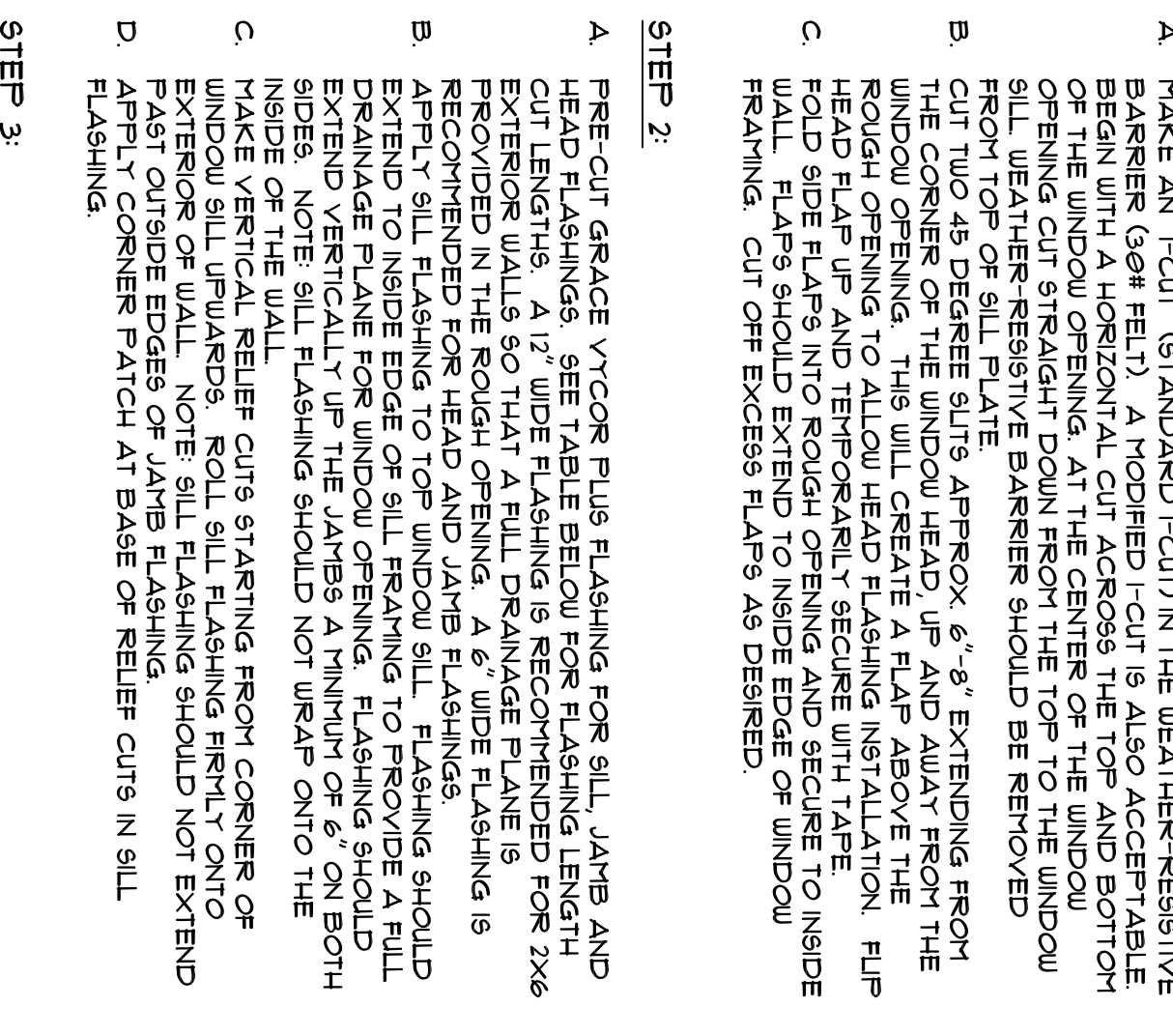
STEP 1-A



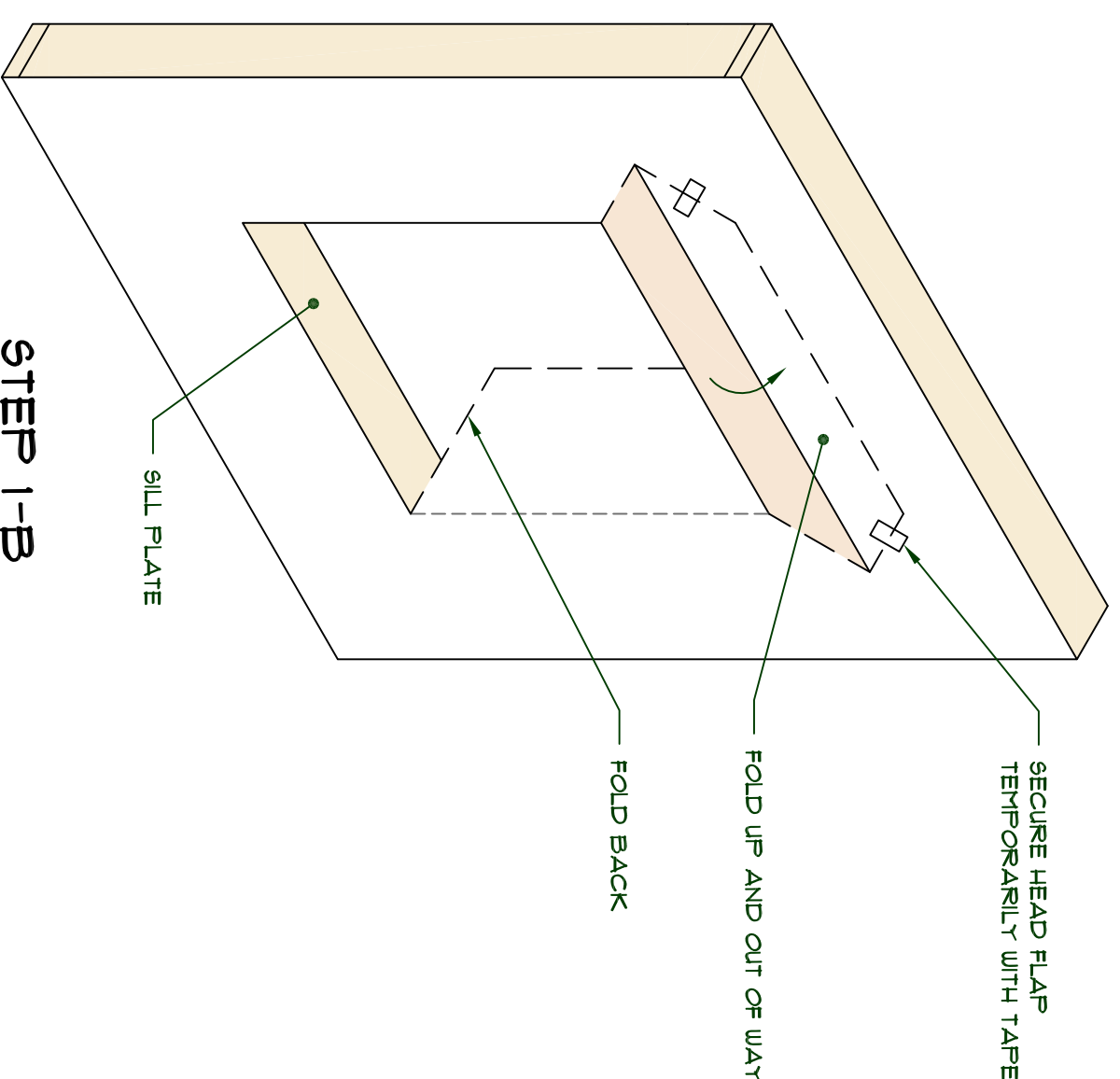
STEP 2



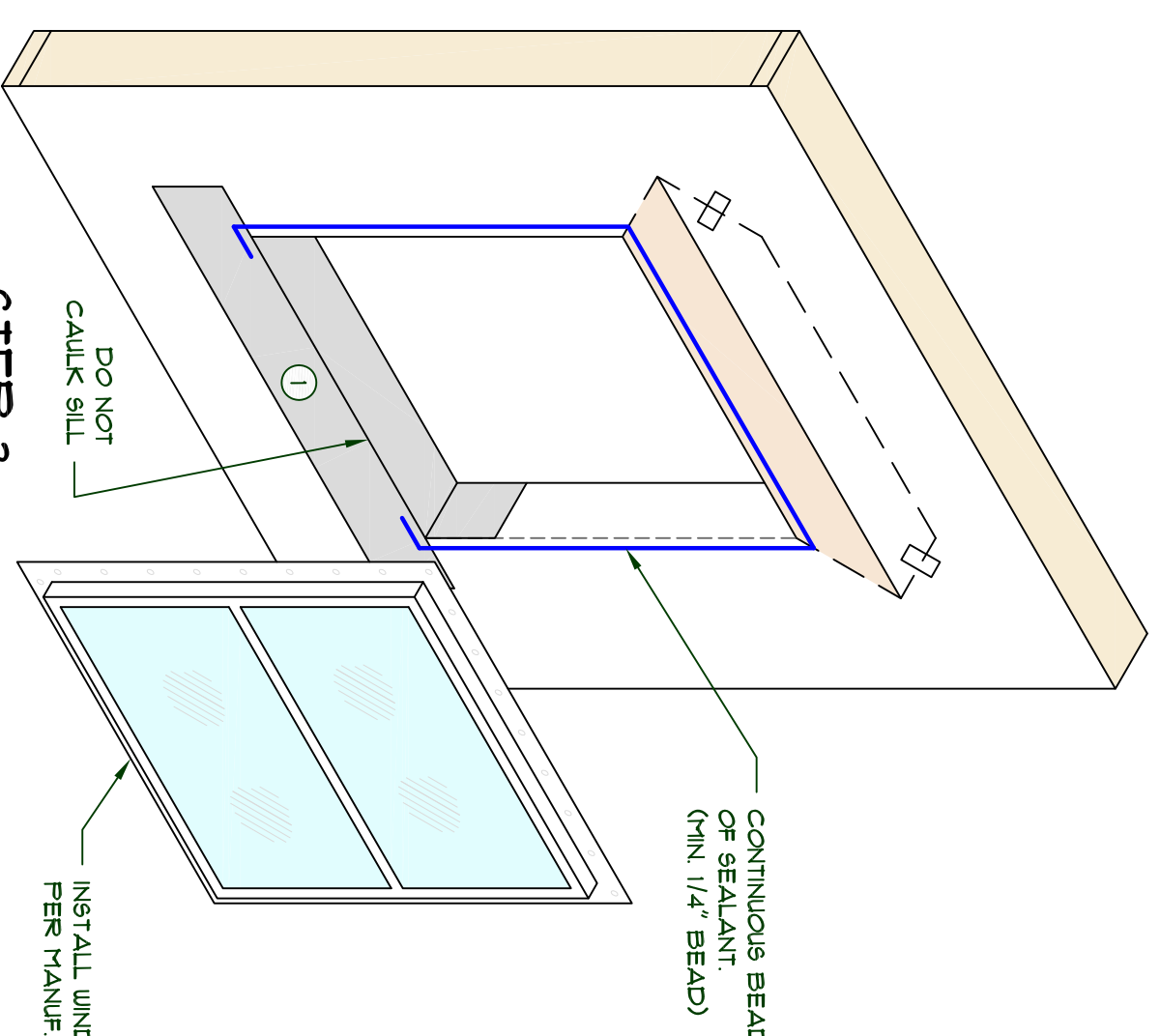
STEP 5



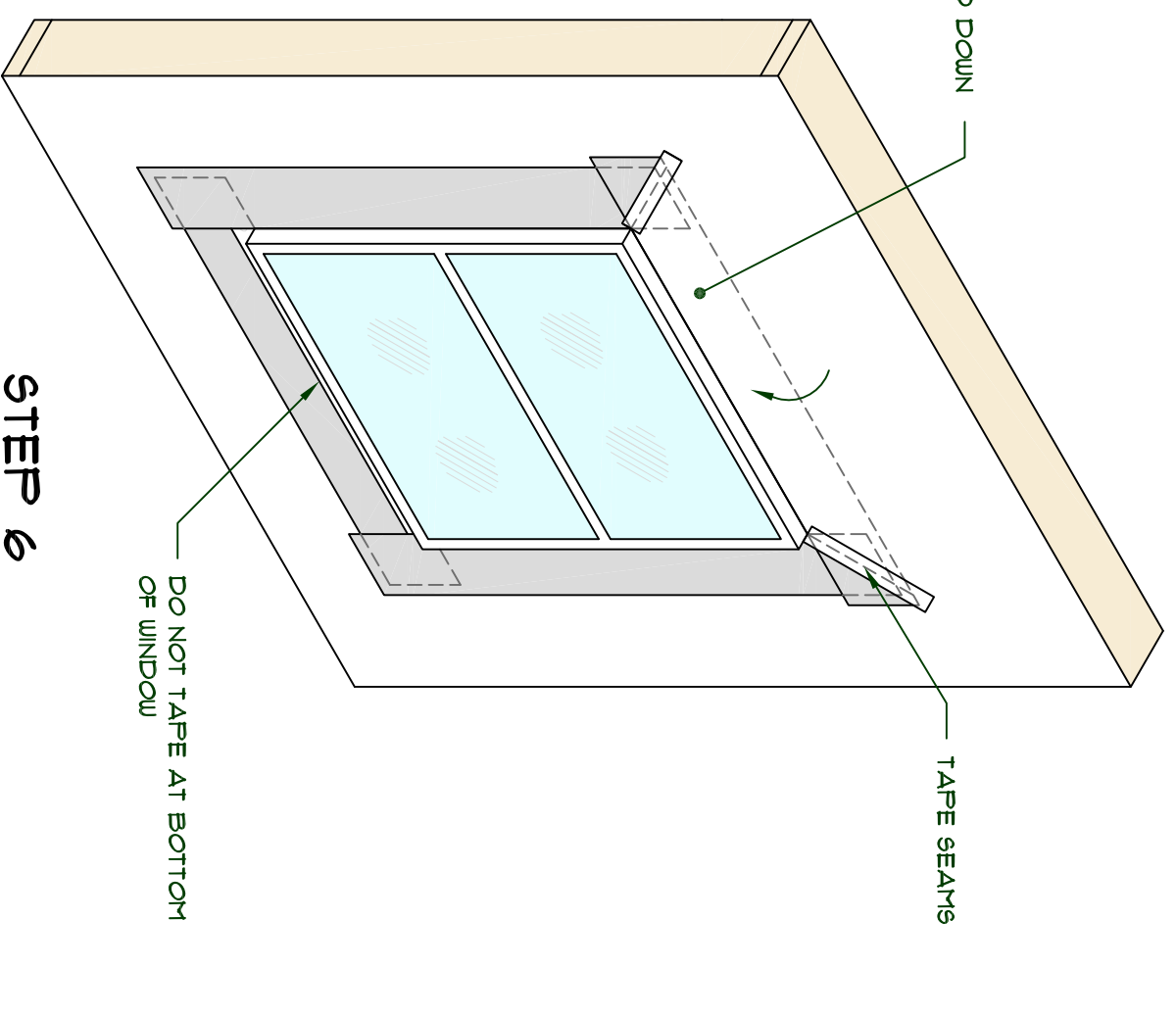
STEP 6



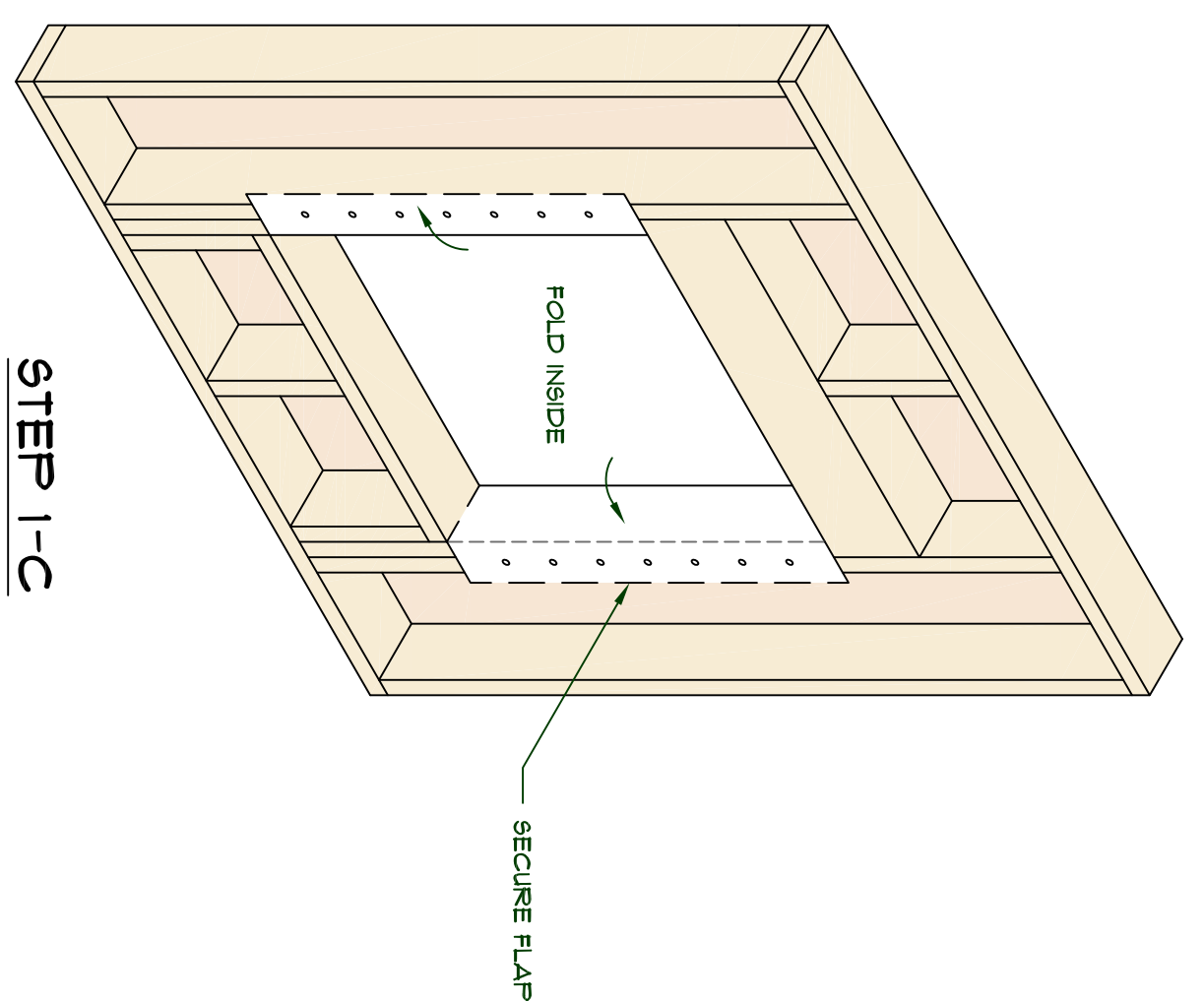
STEP 1-B



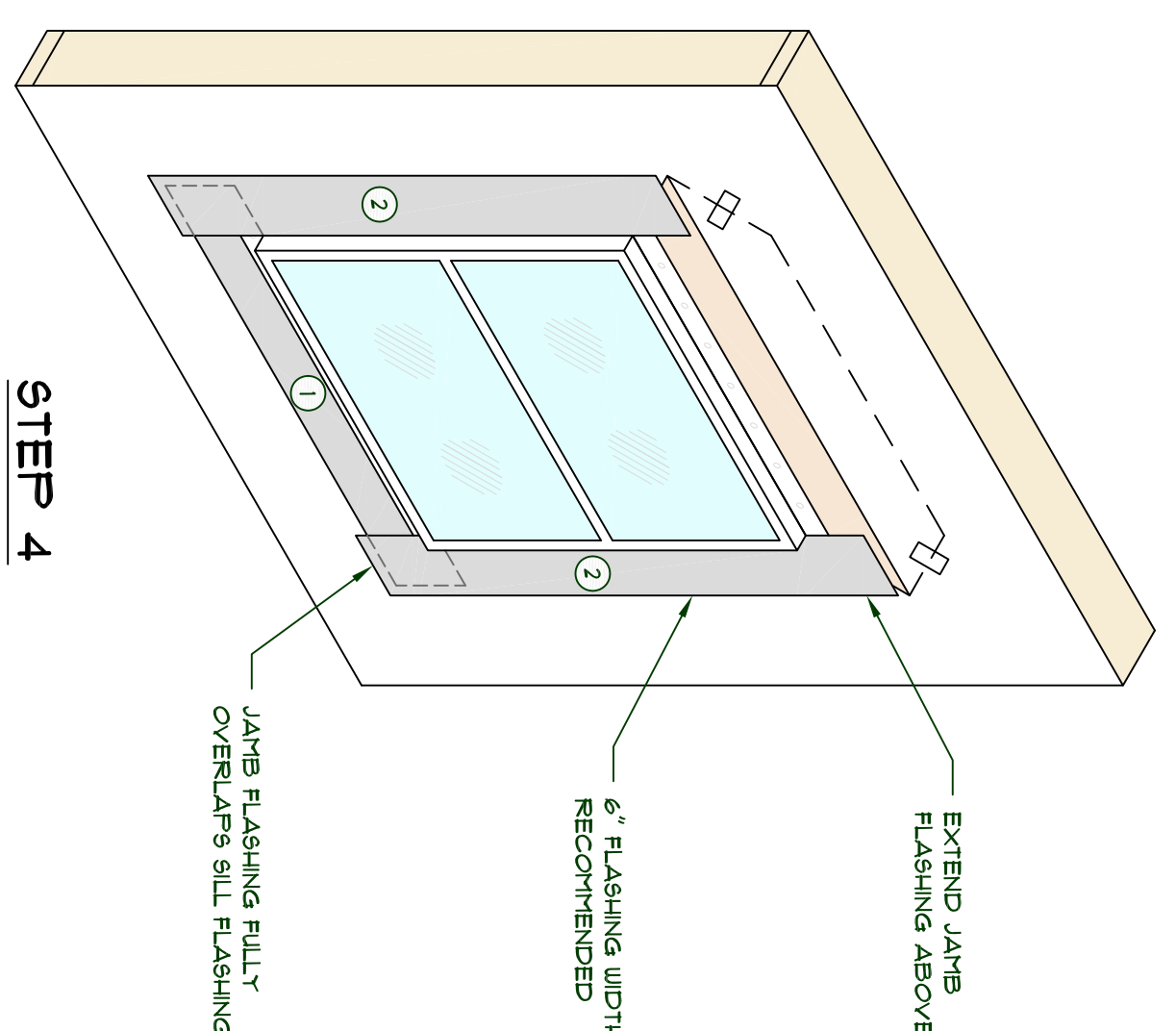
STEP 3



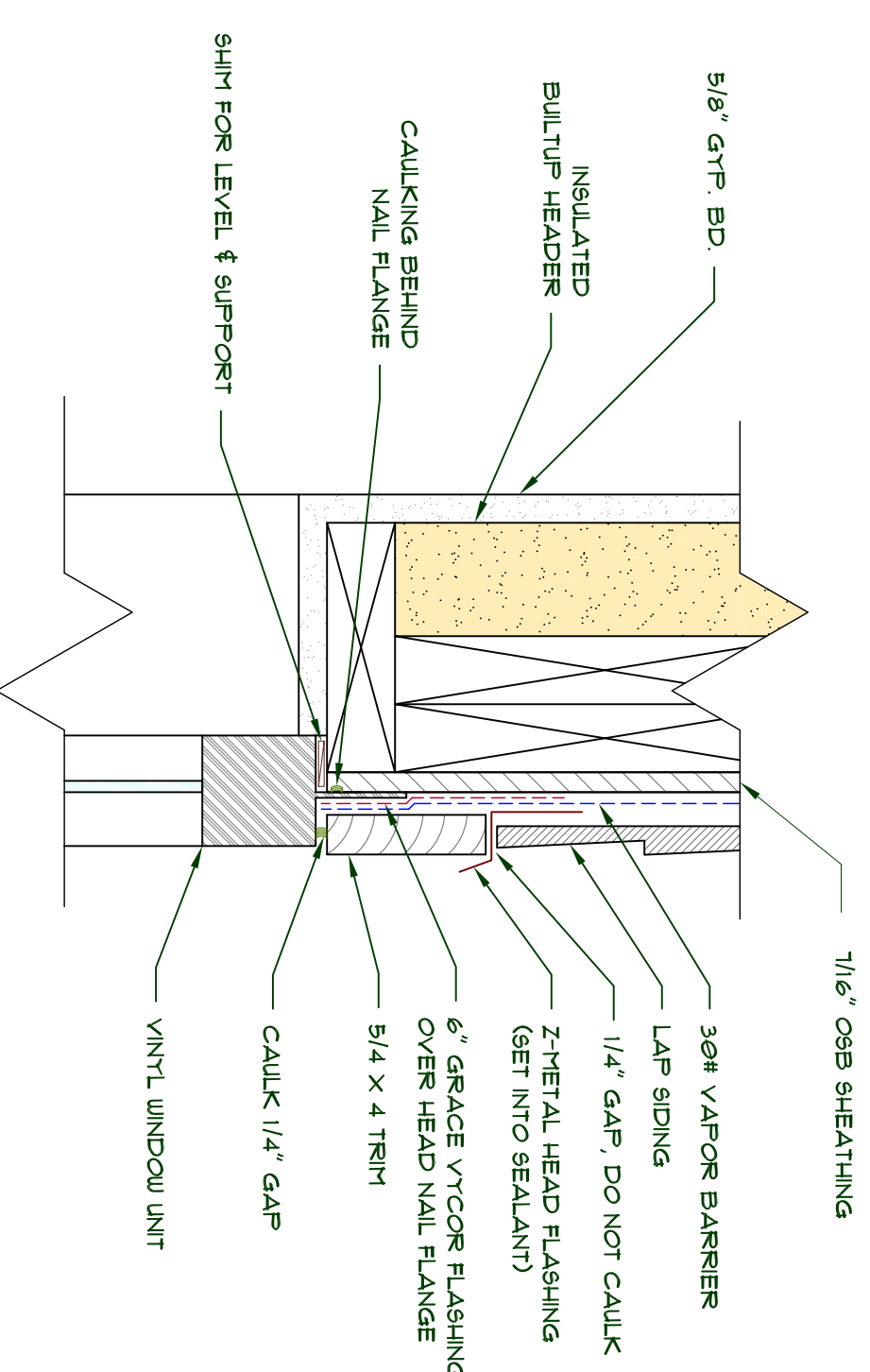
STEP 4



STEP 1-C



STEP 4



WINDOW HEAD DETAIL

SCALE: 1/2"=1'-0"

STEP 1:

- MAKE AN "X" CUT (STANDARD 1-CUT) IN THE WEATHER-RESISTIVE BEAD WITH A HORIZONTAL CUT ACROSS THE TOP AND BOTTOM OF THE WINDOW OPENING. AT THE CENTER OF THE WINDOW OPENING CUT STRAIGHT DOWN FROM THE TOP TO THE WINDOW SILL. WEATHER-RESISTIVE BARRIER SHOULD BE REMOVED FROM TOP OF SILL PLATE.
- TURN UP THE WEATHER RESISTIVE BEAD APPROX. 6" - 8" EXTENDING FROM THE WINDOW OPENING. THIS WILL CREATE A FLAP OVER THE WINDOW OPENING. THIS WILL CREATE A FLAP OVER THE WINDOW OPENING TO ALLOW HEAD FLASHING INSTALLATION. FLIP HEAD FLAP UP AND TEMPORARILY SECURE WITH TAPE.
- FOLD SIDE FLAPS INTO WINDOW OPENING AND SECURE TO INSIDE WALL. FLAPS SHOULD EXTEND TO INSIDE EDGE OF WINDOW FRAMING. CUT OFF EXCESS FLAPS AS DESIRED.

STEP 2:

- PRE-CUT GRACE VYCOR PLUS FLASHING FOR SILL, JAMB AND HEAD FLASHINGS. SEE TABLE BELOW FOR FLASHING LENGTH. CUT LENGTHS A 1/2" WIDE FLASHING IS RECOMMENDED FOR 2X6 PROVIDED IN THE ROUGH OPENING. A 6" WIDE FLASHING IS RECOMMENDED FOR HEAD AND JAMB FLASHINGS.
- APPLY SILL FLASHING TO TOP WINDOW SILL. FLASHING SHOULD EXTEND TO INSIDE EDGE OF SILL FRAMING TO PROVIDE A FULL DRAINAGE FLANGE FOR WINDOW OPENING. FLASHING SHOULD EXTEND VERTICALLY UP THE JAMBS A MINIMUM OF 6" ON BOTH INSIDE OF THE WALL.
- MAKE VERTICAL RELIEF CUTS STARTING FROM CORNER OF WINDOW SILL UPWARDS. ROLL SILL FLASHING FIRMLY ONTO EXTERIOR OF WALL. NOTE SILL FLASHING SHOULD NOT EXTEND FAST OUTSIDE EDGES OF JAMB FLASHING.
- FLIP CORNER PATCH AT BASE OF RELIEF CUTS IN SILL FLASHING.

STEP 3:

- APPLY A CONTINUOUS BEAD OF SEALANT (MIN 1/4") TO ROUGH OPENING TO BURE CONTACT WITH BACKSIDE (INTERIOR) OF WINDOW SILL AND JAMBS. DO NOT CALK ALONG SILL BOTTOM OF WINDOW AND JAMBS. PER MANUFACTURER'S RECOMMENDATION AND INSTALLATION PROCEDURE.
- REMOVE ANY EXCESS SEALANT FROM WINDOW'S NAILING FLANGES AND SURROUNDING AREA TO PROVIDE A SMOOTH CONTINUOUS SUBSTRATE FOR JAMB AND HEAD FLASHINGS.

STEP 4:

- INSTALL PRE-CUT JAMB FLASHINGS ON TOP OF NAILING FLANGES AFTER WINDOW HAS BEEN FULLY INSTALLED. ROLL FIRMLY INTO PLACE.
- JAMB FLASHING SHOULD EXTEND BEYOND SILL FLASHING AT BOTTOM OF WINDOW OPENING BOTH VERTICALLY AND HORIZONTALLY. AVOID REVERSE FLASHING AT THIS INTERSECTION.
- JAMB FLASHING SHOULD EXTEND APPROX. 6" ABOVE TOP OF WINDOW.

STEP 5:

- INSTALL PRE-CUT HEAD FLASHING ON TOP OF WINDOW HEAD NAILING FLANGE. ROLL FIRMLY INTO PLACE.
- MECHANICALLY FASTEN HEAD FLASHING AT TOP OUTERMOST CORNERS.
- HEAD FLASHING SHOULD EXTEND BEYOND OUTER EDGES OF JAMB FLASHINGS.

STEP 6:

- REMOVE TEMPORARY SECUREMENT OF WEATHER-RESISTIVE BARRIER (3/8" FELT) FLAP.
- FOLD FLAP DOWN OVER HEAD FLASHING.
- TAPE ALL SEAMS AND JOINTS WITH WEATHER-RESISTIVE BARRIER SEANT TAPE AS REQUIRED.

STEP 1:

- INSTALL TRIM BOARDS AROUND WINDOW PERIMETER.
- CALK ALL GAPS BETWEEN WINDOW AND TRIM BOARDS.
- INSTALL METAL HEAD FLASHING (VERTICAL) ABOVE HEAD TRIM BOARD. SET METAL FLASHING INTO A CONTINUOUS BEAD OF SEALANT.
- INSTALL LAP SIDING, CALKING ALL GAPS.
- INSTALL SEAL: APPLY INSULATING FOAM SEALANT (AND BACKER ROD AS NECESSARY).
- DO NOT CALK BOTTOM OF FIRST RUN OF SIDING.

LOCATION	FLASHING LENGTH FORMULA
SILL FLASHING	R O WIDTH + (2 X FLASHING WIDTH)
JAMB FLASHING	R O WIDTH + (2 X FLASHING WIDTH) - 1
HEAD FLASHING	R O WIDTH + (2 X FLASHING WIDTH) + 2

WINDOW FLASHING DETAILS

DESIGNED BY:

NFW

DATE:

8/8/2014

JOB NO.

DOORS & WINDOWS

SCALE: 1:16

REVISION: A, 2

MEDEEK ENGINEERING Inc.

3035 SR 109 COPALE BEACH WA 98335
PH: (425) 420-9175
DENG@MEDEEK.COM



ALL INFORMATION CONTAINED IN THIS DRAWING IS THE PROPERTY OF MEDEEK ENGINEERING. IT IS TO BE USED ONLY FOR THE PROJECT AND DATE SPECIFIED. ANY REUSE OR MODIFICATION WITHOUT WRITTEN CONSENT IS PROHIBITED.