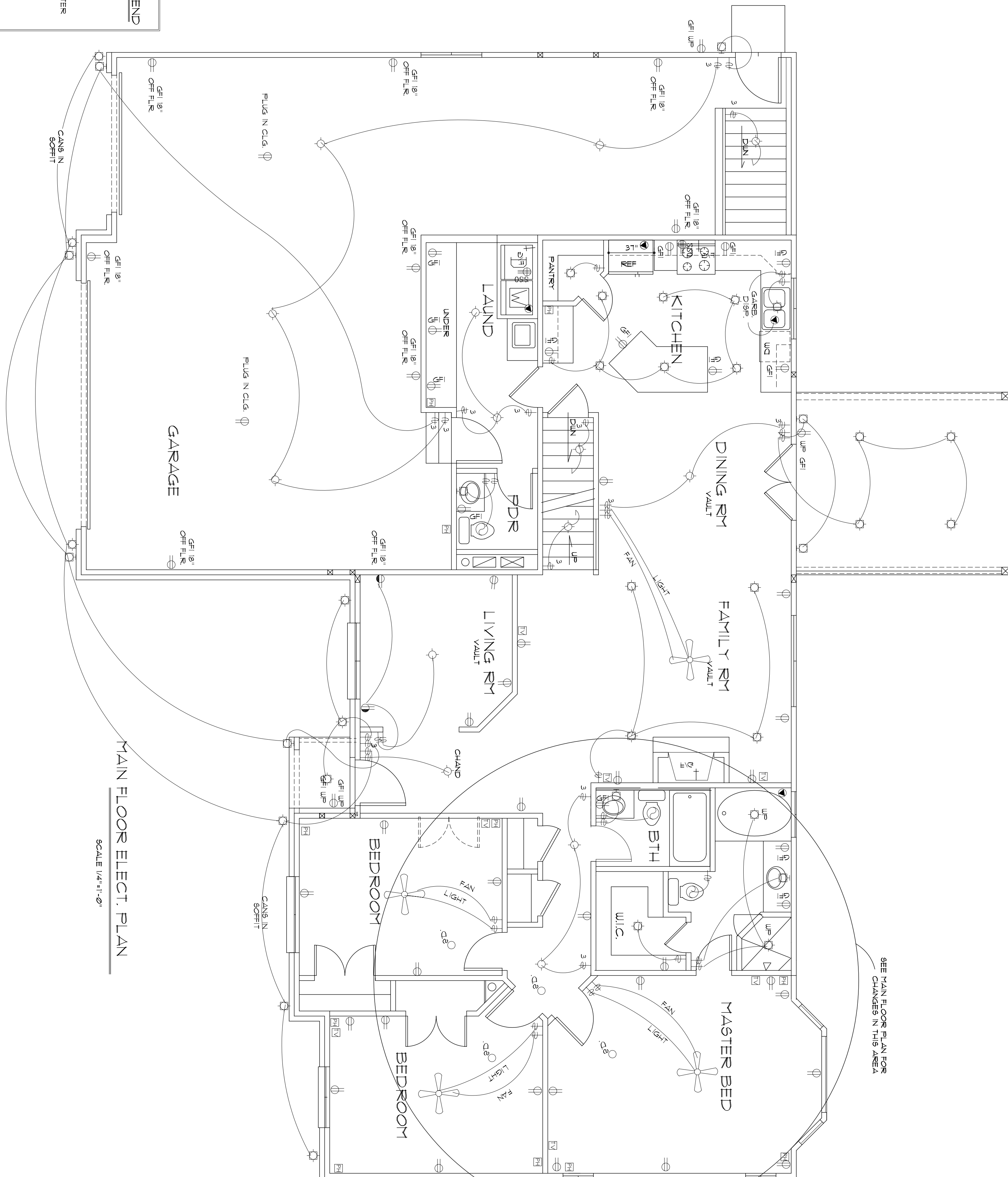


ATTIC ELECT. PLAN

SCALE 1/4"=1'-0"

ELECT. SYMBOL LEGEND

- ⊕ 110 VOLT OUTLET
- ⊕ 1/2 HOT OUTLET
- ⊕ GROUND FAULT INTERRUPTER
- ⊕ 220 VOLT OUTLET
- ⊕ DEDICATED CIRCUIT
- ⊕ STANDARD LIGHT FIXT.
- ⊕ RECESSED CAN LIGHT
- ⊕ WALL LIGHT FIXT.
- ⊕ SPOT LIGHT
- ⊕ SMOKE DETECTOR
- ⊕ EXHAUST FAN
- ⊕ SWITCH
- ⊕ 3-WAY SWITCH
- ⊕ TELEPHONE JACK
- ⊕ TELEVISION JACK
- ⊕ CEILING FAN



MAIN FLOOR ELECT. PLAN

SCALE 1/4"=1'-0"

ELECTRICAL NOTES:

- ALL SUBS SEE SHEET EH.
- CONFIRM LOCATION OF TV, PHONE & OUTLETS IN SLOTTES FOR CHRISTMAS LIGHTS WITH OWNER
- CONFIRM LOCATION OF RECESSED CANS & CEILING FANS WITH OWNER
- PROVIDE LIGHT UNDER ALL EXCESSOR LIGHTS, SPOT LIGHTS, FLOOD LIGHTS, SECURITY DEVICES, & MOTIONHEAT SENSORS
- PROVIDE LIGHTING UNDER UPPER KITCHEN CABINETS SEE OWNER IF NEEDED
- SEE SECTION "E" ON SHEET EH.
- 120 VOLT SMOKE DETECTOR REQUIRED ON EACH FLOOR LEVEL
- ALL BOXES FOR CEILING FANS MUST BE RATED FOR SUCH USE
- ALL FAULT PROTECTED CIRCUIT INTERRUPTER IN ALL SLEEPING BEDROOMS AT BREAKER PANEL.

DESIGNED BY	DATE
DRAWN BY	JOB #
PERMITTED BY	SHEET #

CONTRACTOR TO VERIFY ALL DIMENSIONS & CONDITIONS

REVISIONS

ELECTRICAL PLANS

A RESIDENCE FOR:
WILKERSON, RICHARD
 LOCATION: UTAH

J FISK DESIGNS
 931 WEST CENTER (BSMNT) OREM, UTAH 84057
 (801) 225-7631 FAX (801) 229-2676