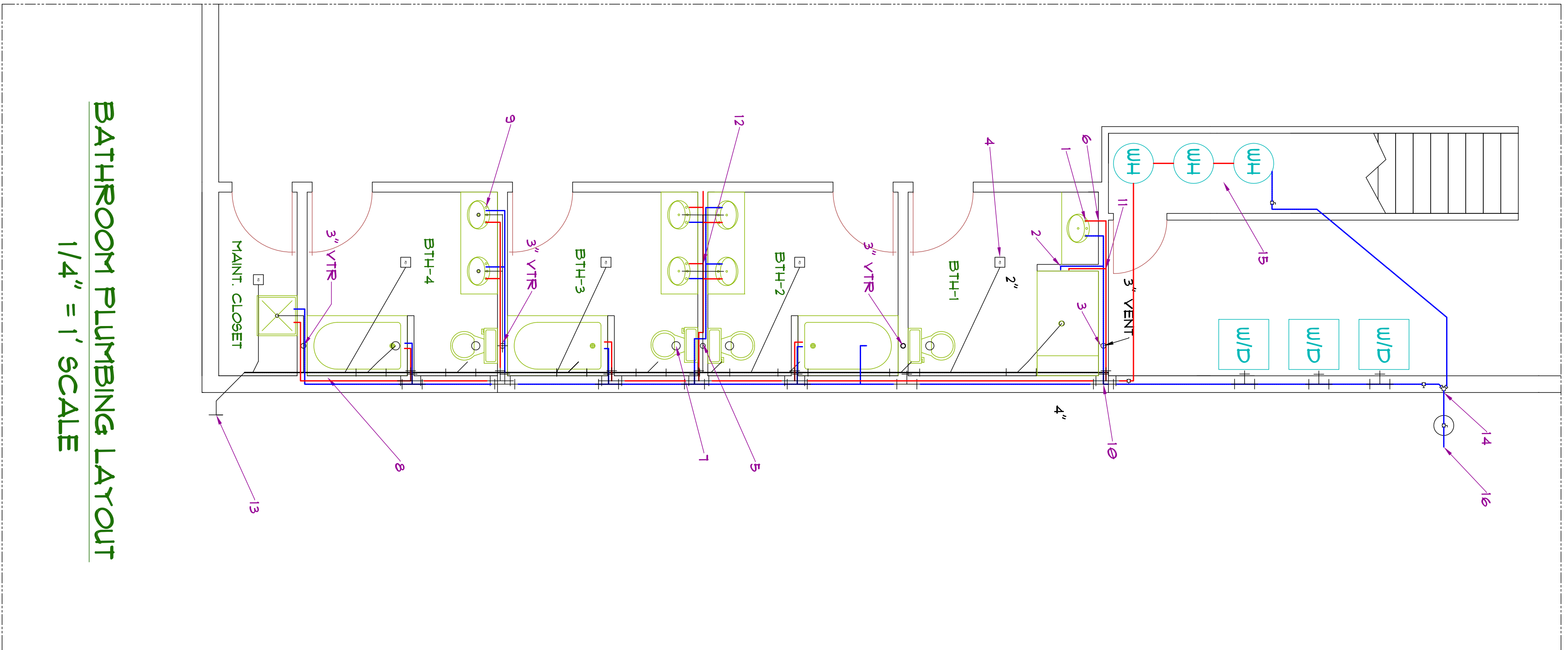


FLOOR DRAIN LAYOUT
1/8" = 1' SCALE



BATHROOM PLUMBING LAYOUT
1/4" = 1' SCALE

- PLUMBING NOTES**
- 1 3/4" HW/CW DOWN IN WALL, SINK WITH STOP VALVES, 2" VENT AND 2" WASTE
 - 2 1/2" HW/CW DOWN IN WALL, SINK WITH STOP VALVES, 2" VENT AND 2" WASTE
 - 3 3" VENT (5 PLACES)
 - 4 3" FLOOR DRAIN (6 PLACES)
 - 5 3" VENT TO THE IN 6"
 - 6 3/4" HW/CW DOWN IN WALL, SINK WITH STOP VALVES, 2" VENT AND 2" WASTE
 - 7 3" VENT TO THE IN 6"
 - 8 3" CLEAN OUT INSTALLED ON ALL BATH/SHOWER TOILETS
 - 9 1/2" HW/CW DOWN IN WALL, SINK WITH STOP VALVES, 2" VENT AND 2" WASTE
 - 10 ALL TEES OFF 1" HW/CW ARE 3/4" X 3/4" X 3/4" BRASS PEX TEE
 - 11 HW/CW 1/2" X 1/2" X 1/2" BRASS PEX TEE
 - 12 HW/CW 1/2" X 1/2" X 1/2" BRASS PEX TEE
 - 13 CONNECT TO SAN. SEWER SYSTEM
 - 14 SPLIT MAIN 1" LINE TO (2) 3/4" LINES
 - 15 WATER HEATERS CONNECTED IN SERIES
 - 16 SHUTOFF VALVE FROM MAIN TO CARVING SHED